



Reference 18282

## 2 Bed Apartment in Erimi, Limassol

**€240,000** +VAT

Erimi, Limassol

2 Bedrooms | 2 Bathrooms | 77.8 m<sup>2</sup> Covered

### Description

- 2 bedrooms
- 2 W/C
- Internal Area 77.8m<sup>2</sup>
- Covered Verandas 17.1m<sup>2</sup>
- Covered Parking
- Storage
- Energy Efficiency "A"

Covered veranda	17.1 m <sup>2</sup>
Parking spaces	1
Energy efficiency rating	A
Year of construction	2027
Status	Under construction



## Facilities

✓ Aircondition · Provision   ✓ Parking · Covered   ✓ Elevator   ✓ Storage   ✓ Solar water heater

---

## Features

✓ Veranda   ✓ Ceramic tiles   ✓ Modern design   ✓ Alarm system (provision)   ✓ Double glazing  
✓ Pressurized water system   ✓ Door screen   ✓ Pipe-in-pipe plumbing system  
✓ Shutters, electric (provision)   ✓ Easy access to main roads   ✓ Sound insulation  
✓ Thermal insulation   ✓ Smart home automation

---

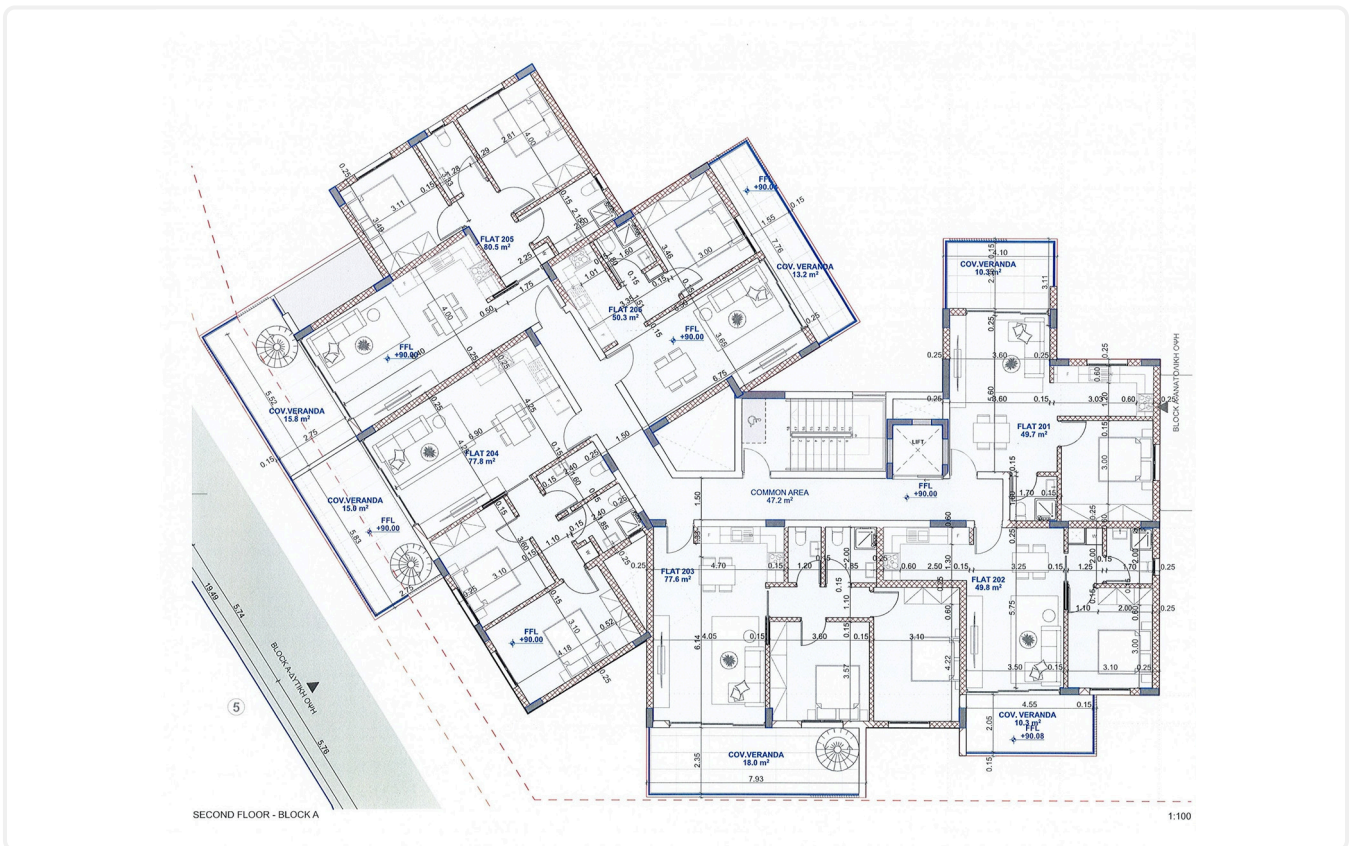
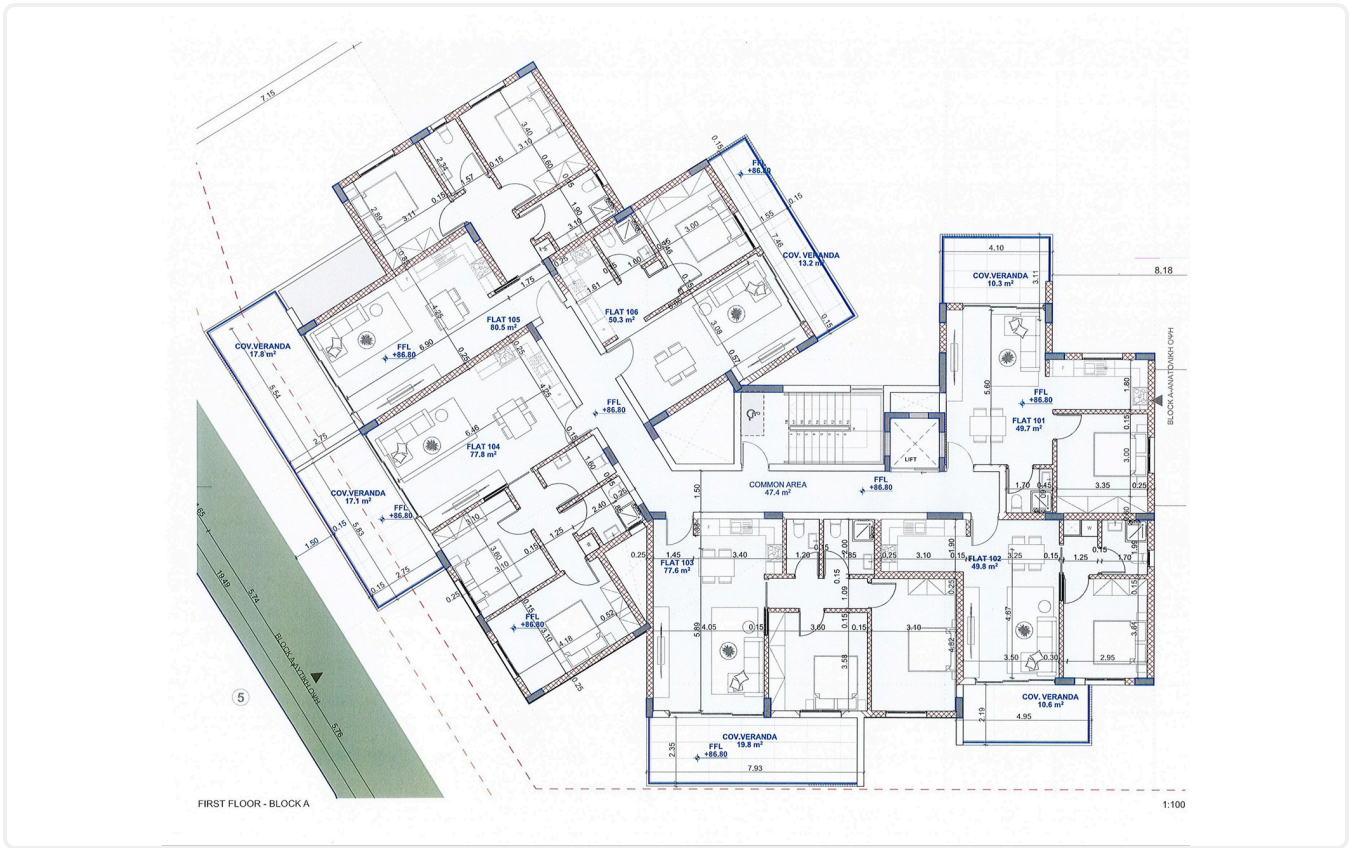
## Gallery

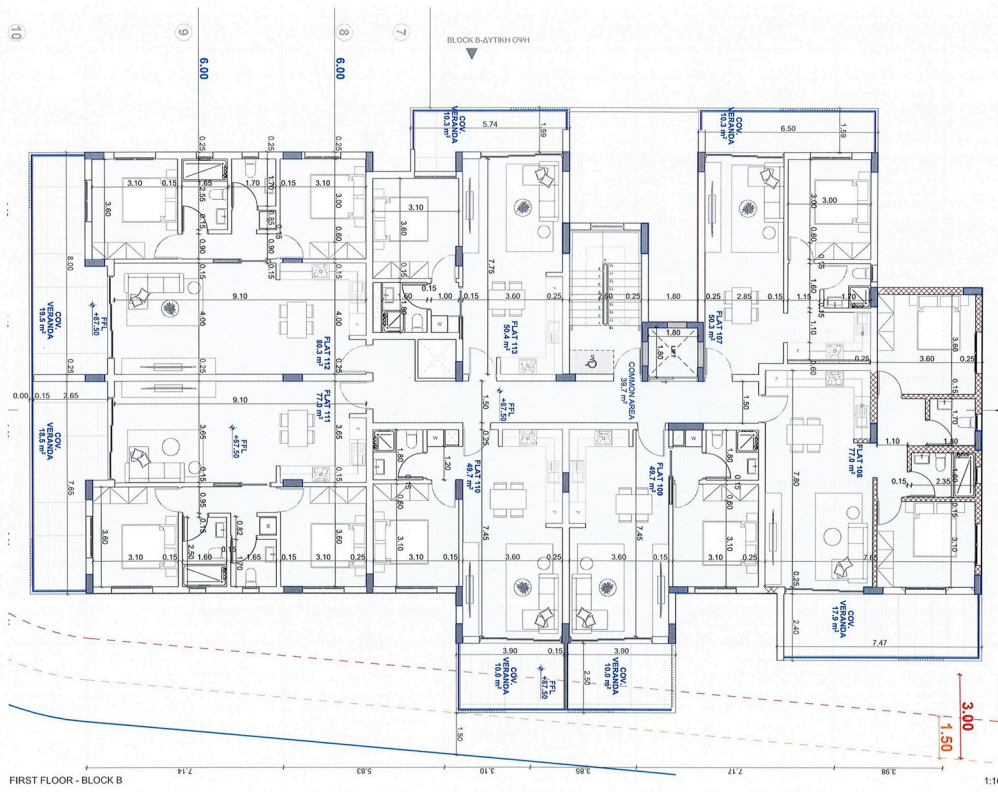
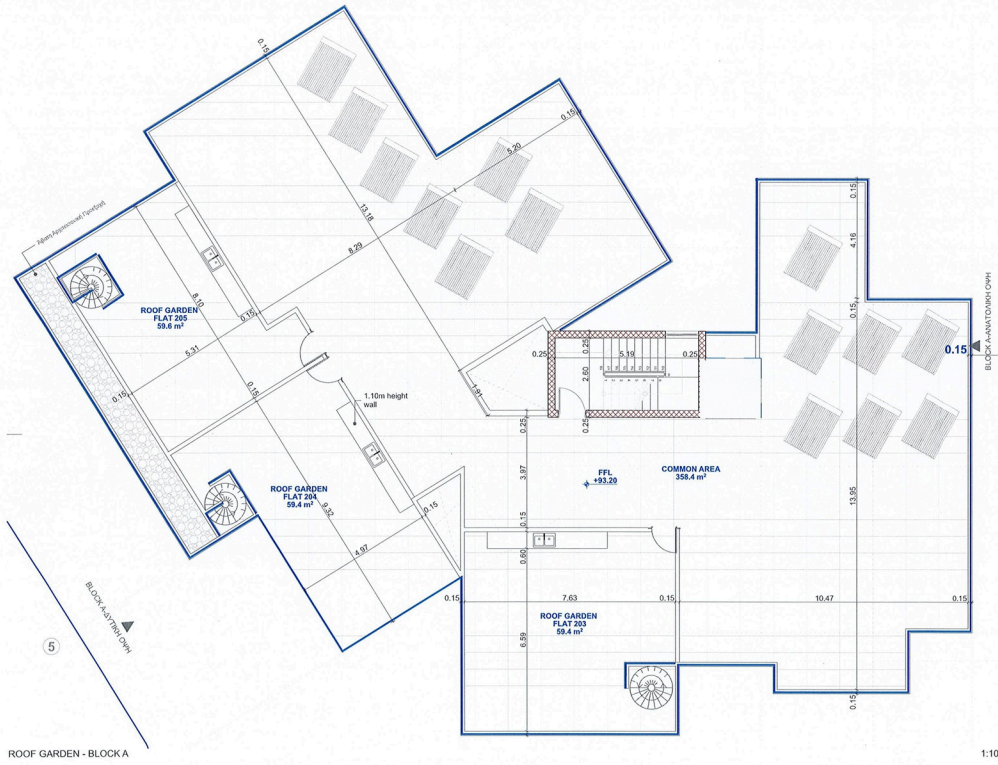


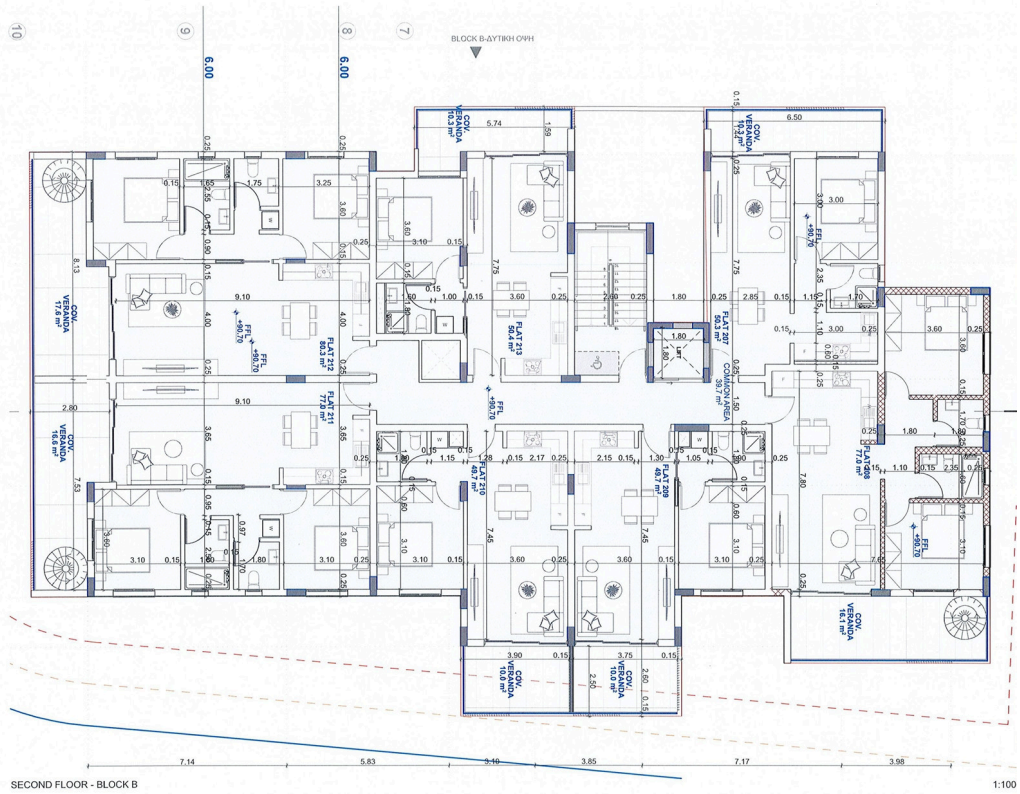




# Floor plans

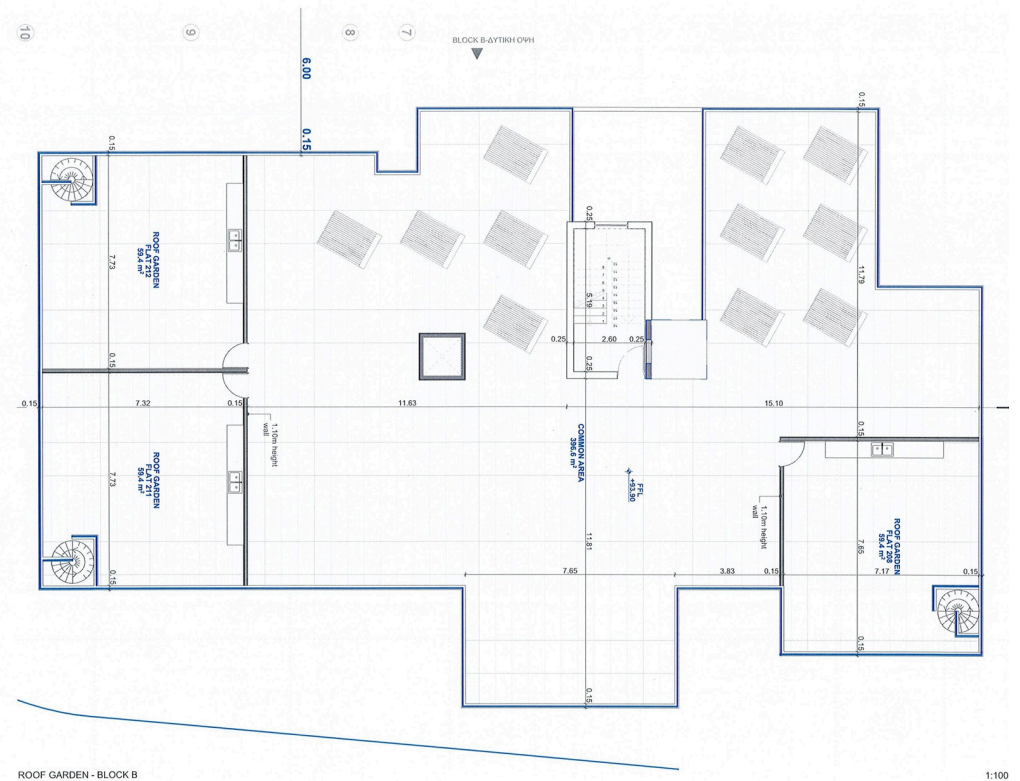






SECOND FLOOR - BLOCK B

1:100



ROOF GARDEN - BLOCK B

1:100

