



Reference 17788

2 Bed Penthouse with Large Veranda in Kiti

€289,000 +VAT

Kiti, Larnaca

2 Bedrooms | 2 Bathrooms | 77 m² Covered

Description

- 2 Bedroom
- 2 W/C
- Internal Area 77m²
- Covered Veranda 12m²
- Uncovered Veranda 86m²
- Covered Parking
- Storage
- Photovoltaic system of 3KW
- Energy Efficiency "A"

Covered veranda	12 m ²
Uncovered veranda	86 m ²
Parking spaces	1
Energy efficiency rating	A
Year of construction	2028
Status	Off plan



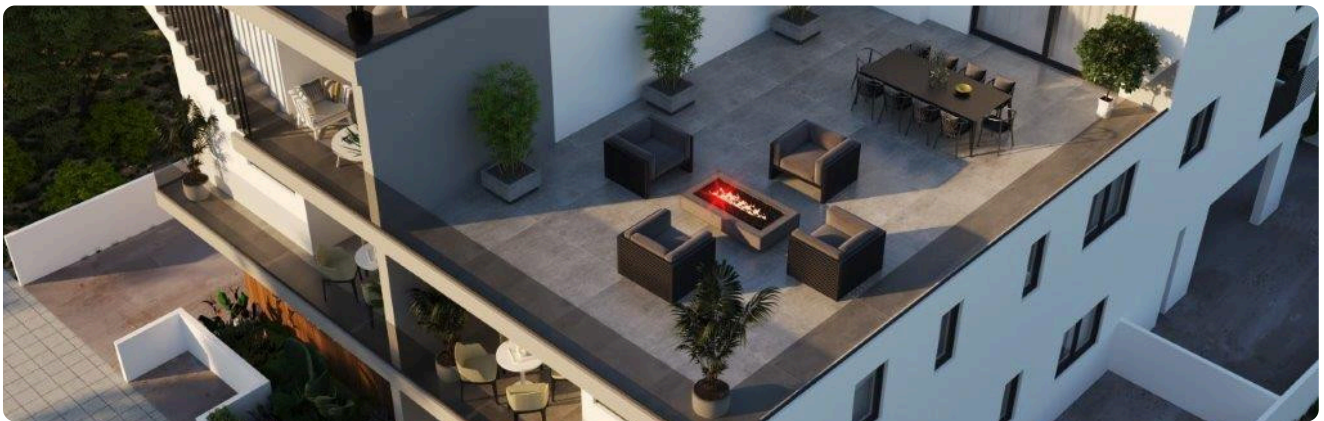
Facilities

✓ Aircondition · Provision ✓ Parking · Covered ✓ Storage ✓ Solar photovoltaic panels (provision)

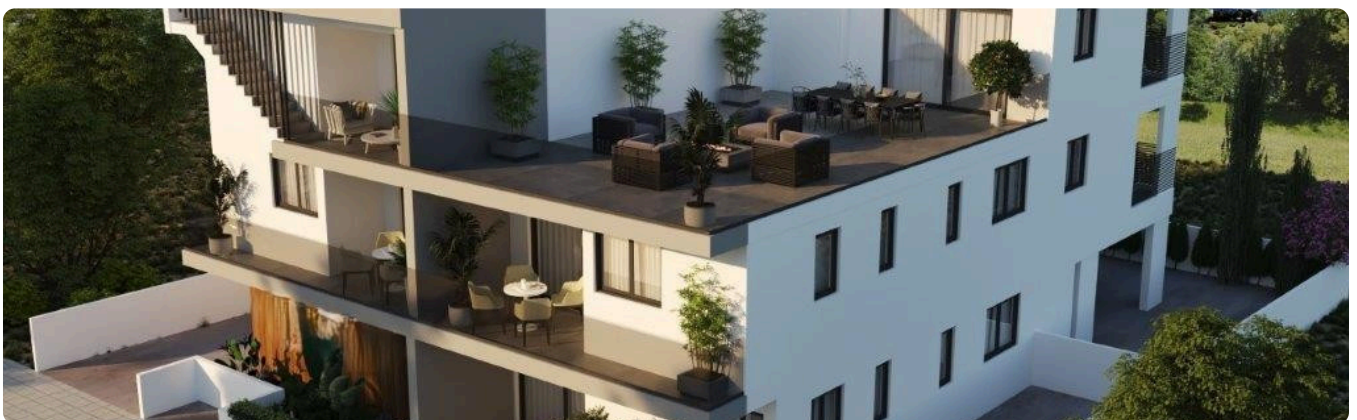
Features

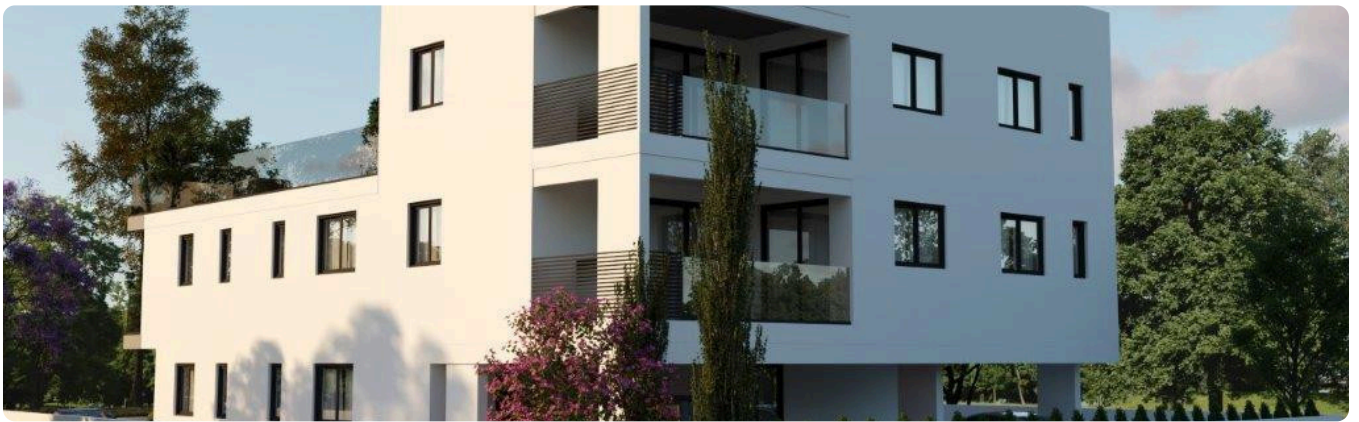
✓ Veranda, large ✓ En suite bathroom ✓ Modern design ✓ Near amenities ✓ Double glazing
✓ Open plan ✓ Thermal insulation

Gallery

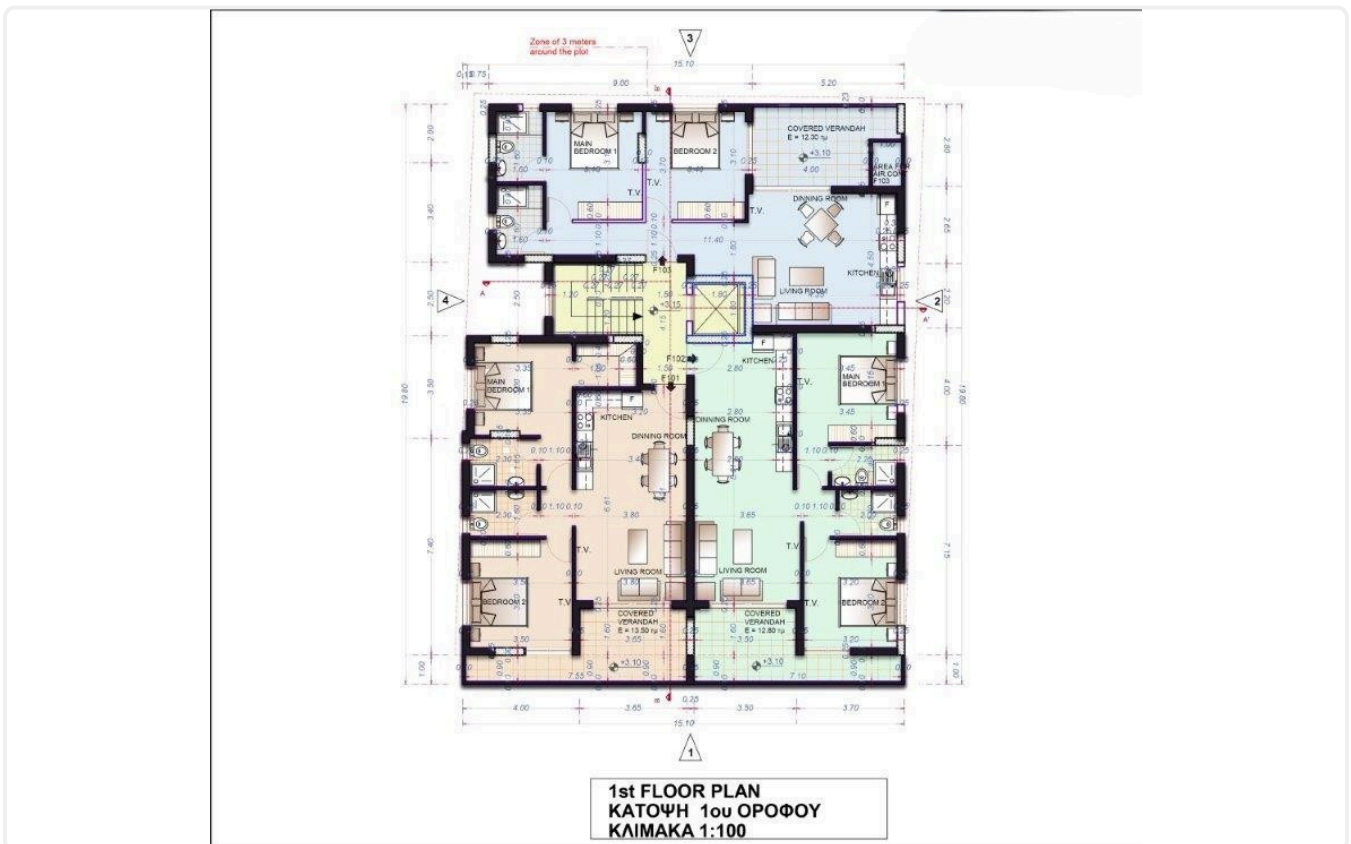


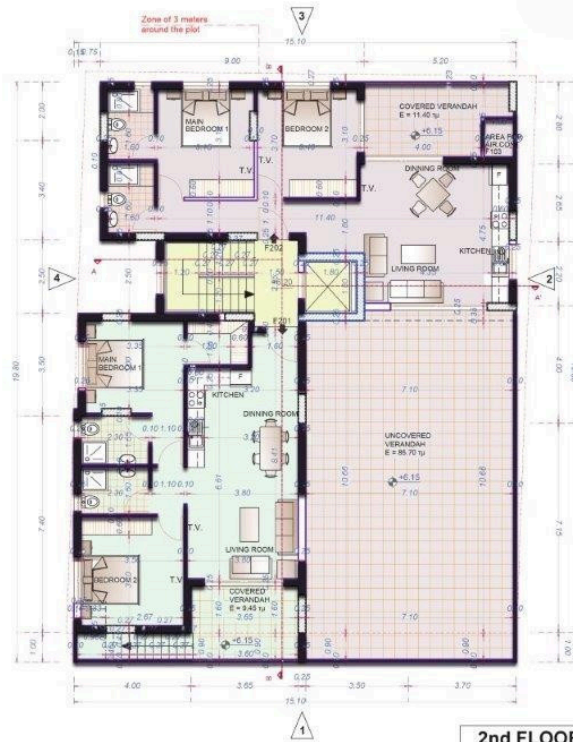




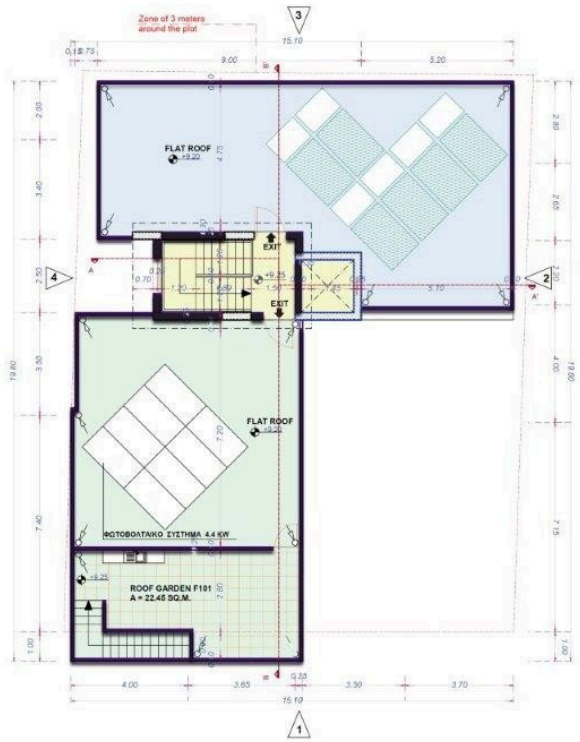


Floor plans





2nd FLOOR PLAN
ΚΑΤΩΦΗ 2ου ΟΡΟΦΟΥ
ΚΛΙΜΑΚΑ 1:100



ROOF GARDEN PLAN
ΚΑΤΩΦΗ ΤΑΡΡΑΤΣΑΣ
ΚΛΙΜΑΚΑ 1:100

