



Reference 16950

## 2 Bed Apartment in Katholiki, Limassol

**€339,000** +VAT

Katholiki, Limassol

2 Bedrooms

1 Bathroom

65 m<sup>2</sup> Covered

### Description

- 2 bedrooms
- 1 W/C
- Internal Area 65m<sup>2</sup>
- Covered Verandas 16m<sup>2</sup>
- Covered Parking
- Storage
- Energy Efficiency "A+"
- Near Molos Promenade, Old Port, Limassol Marina and Saripolou Square

Covered veranda	16 m <sup>2</sup>
Parking spaces	1
Energy efficiency rating	A+
Year of construction	2029
Status	Off plan



## Facilities

✓ Parking · Covered    ✓ Elevator    ✓ Storage

---

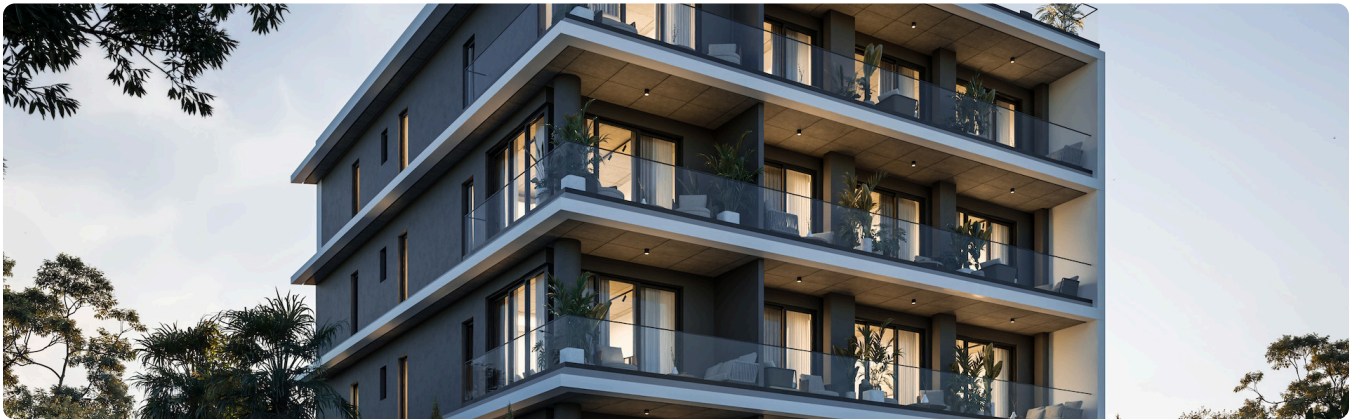
## Features

✓ Veranda    ✓ Semi-solid parquet flooring    ✓ Ceramic tiles    ✓ Modern design    ✓ Near amenities  
✓ Open plan    ✓ Investment opportunity    ✓ Door screen    ✓ Bright    ✓ High ceilings  
✓ Easy access to main roads    ✓ Thermal insulation

---

## Gallery









Floor plans

