



Reference 16947

2 Bed Apartment in Katholiki, Limassol

€369,000 +VAT

Katholiki, Limassol

2 Bedrooms

2 Bathrooms

80 m² Covered

Description

- 2 bedrooms
- 2 W/C
- Internal Area 80m²
- Covered Verandas 20m²
- Covered Parking
- Storage
- Energy Efficiency "A+"
- Near Molos Promenade, Old Port, Limassol Marina and Saripolou Square

Covered veranda	20 m ²
Parking spaces	1
Energy efficiency rating	A+
Year of construction	2029
Status	Off plan



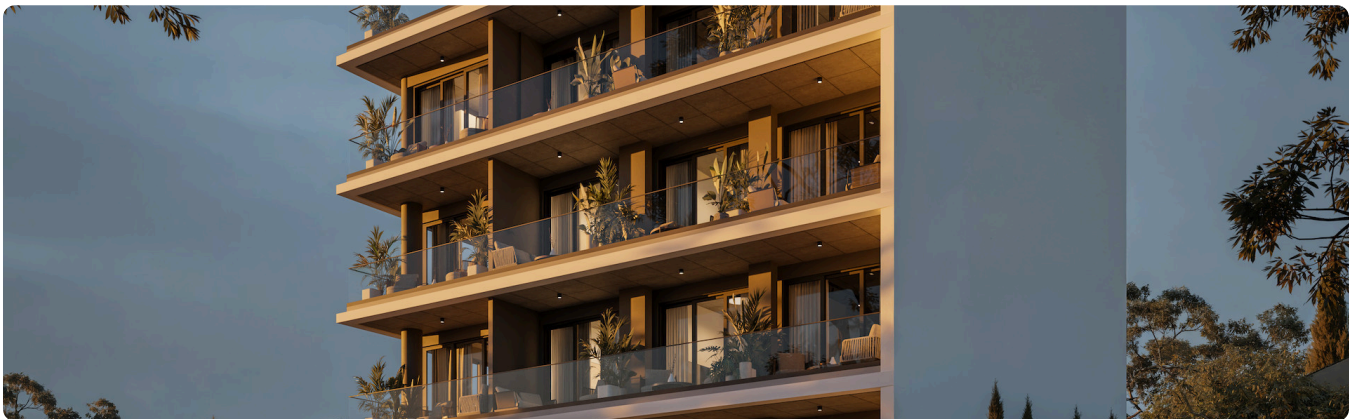
Facilities

✓ Parking · Covered ✓ Elevator ✓ Storage

Features

✓ Veranda ✓ Semi-solid parquet flooring ✓ Ceramic tiles ✓ Modern design ✓ Near amenities
✓ Open plan ✓ Investment opportunity ✓ Door screen ✓ Bright ✓ High ceilings
✓ Easy access to main roads ✓ Thermal insulation

Gallery









Floor plans

