



Reference 16925

Whole Floor 3 Bed Apartment with 2 Offices in Polemidia, Limassol **€1,120,000 +VAT**

Kato Polemidia, Limassol

5 Bedrooms | 2 Bathrooms | 281 m² Covered

Description

- 3 bedrooms
- 2 Offices
- 2 W/C
- Covered Areas 281m²
- Covered Verandas 24m²
- 3 Covered Parking Spaces
- Communal Swimming Pool
- Energy Efficiency "A"

Covered veranda	24 m ²
Parking spaces	3
Energy efficiency rating	A
Year of construction	2026
Status	Under construction



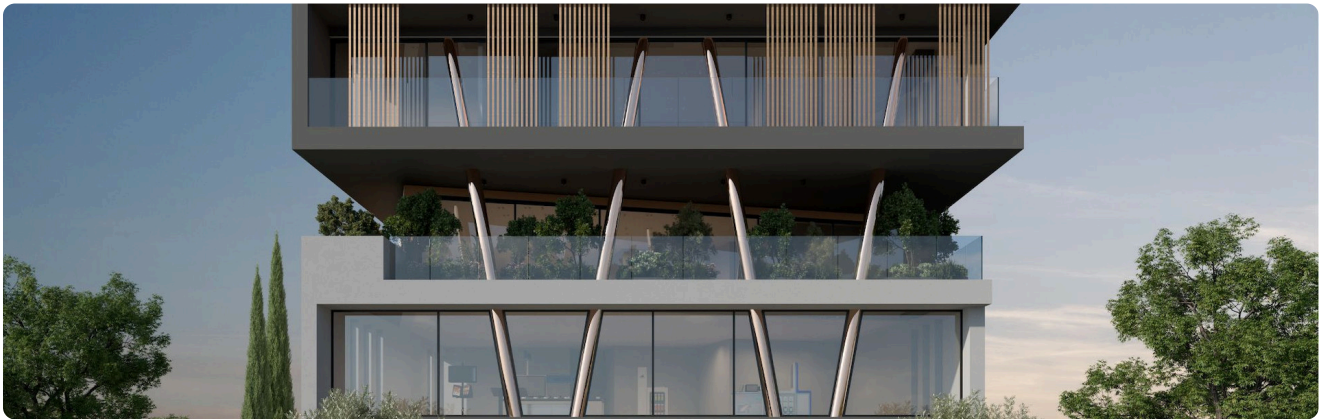
Facilities

✓ Aircondition · Provision ✓ Parking · Covered ✓ Pool · Communal ✓ Elevator

Features

✓ Veranda ✓ CCTV ✓ Modern design ✓ Near amenities ✓ Office ✓ Roof garden
✓ Open plan ✓ Easy access to highway ✓ Thermal insulation

Gallery





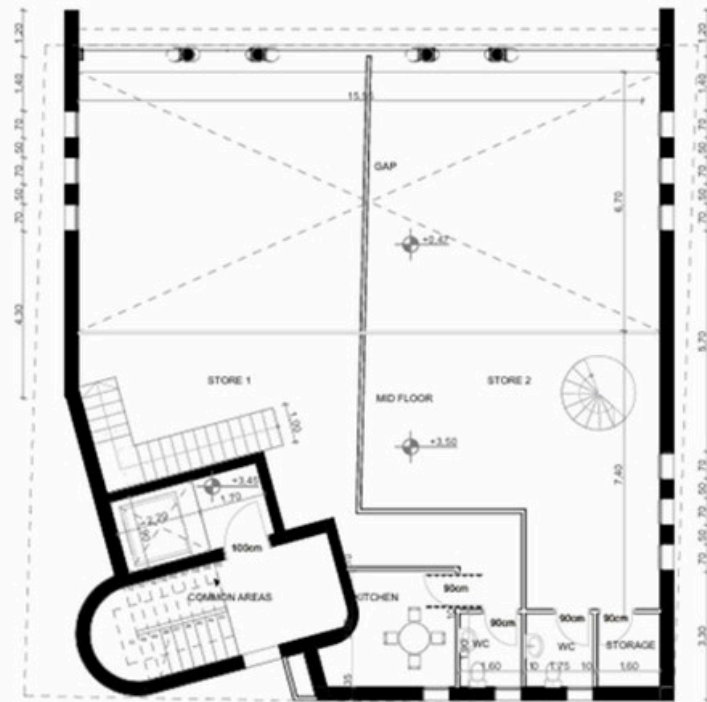
[illegible]

Ground Floor

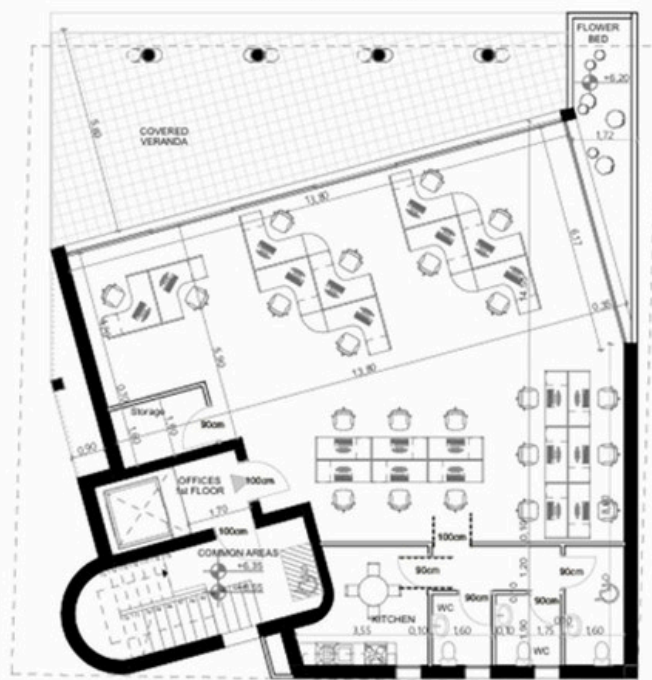
The Ground Floor plan shows a rectangular building with two main interior spaces, STORE 1 and STORE 2. The plan includes the following features and dimensions:

- Entrances:** There are three main entrances. One is at the top center labeled "STORE 1 ENTRANCE" and "STORE 2 ENTRANCE" with a width of 3.00. Another is at the bottom center labeled "ENTRANCE" with a width of 3.00. A third is at the top right labeled "ENTRANCE" with a width of 1.50.
- Stores:** STORE 1 is on the left, measuring 10.00 by 10.00. STORE 2 is on the right, measuring 10.00 by 10.00.
- Parking:** "VEHICLES ENTRANCE/EXIT" is at the top left. "TEMPORARY CAR PARKING" is at the top right. "P.V. BRK. W/PAVING" is at the bottom left.
- Other Features:** "TRASH PLACE" is at the top right. "DIS. LIFT" is at the top right. "COMMON AREAS" are at the bottom left. "P.V. BRK. W/PAVING" is at the bottom right.
- Dimensions:** Various dimensions are provided for walls, openings, and areas. For example, the top wall has a total width of 10.00, with sections of 3.00, 3.00, and 4.00. The bottom wall has a total width of 10.00, with sections of 3.00, 3.00, and 4.00. The left wall has a total height of 10.00, with sections of 3.00, 3.00, and 4.00. The right wall has a total height of 10.00, with sections of 3.00, 3.00, and 4.00.
- Level Markers:** Several level markers are shown, such as +0.00, +0.10, +0.20, +0.30, +0.40, +0.50, +0.60, +0.70, +0.80, +0.90, +1.00, +1.10, +1.20, +1.30, +1.40, +1.50, +1.60, +1.70, +1.80, +1.90, +2.00, +2.10, +2.20, +2.30, +2.40, +2.50, +2.60, +2.70, +2.80, +2.90, +3.00, +3.10, +3.20, +3.30, +3.40, +3.50, +3.60, +3.70, +3.80, +3.90, +4.00, +4.10, +4.20, +4.30, +4.40, +4.50, +4.60, +4.70, +4.80, +4.90, +5.00, +5.10, +5.20, +5.30, +5.40, +5.50, +5.60, +5.70, +5.80, +5.90, +6.00, +6.10, +6.20, +6.30, +6.40, +6.50, +6.60, +6.70, +6.80, +6.90, +7.00, +7.10, +7.20, +7.30, +7.40, +7.50, +7.60, +7.70, +7.80, +7.90, +8.00, +8.10, +8.20, +8.30, +8.40, +8.50, +8.60, +8.70, +8.80, +8.90, +9.00, +9.10, +9.20, +9.30, +9.40, +9.50, +9.60, +9.70, +9.80, +9.90, +10.00.

Mezzanine



First Floor



[illegible][illegible]