



Reference 16734

2 Bed Penthouse with roof garden in Limassol City

€468,000 +VAT

Limassol Old City, Limassol

2 Bedrooms

2 Bathrooms

84 m² Covered

Description

- 2 bedrooms
- 2 W/C
- Internal Area 84m²
- Covered Verandas 18m²
- Uncovered Verandas 4m²
- Roof Garden 50m²
- Covered Parking
- A/C
- Underfloor Heating
- Walk-in Closet
- Storage
- Energy Efficiency "A"
- Photovoltaic panels partially cover electricity consumption

Covered veranda	18 m ²
Uncovered veranda	4 m ²
Roof garden	50 m ²
Parking spaces	1
Energy efficiency rating	A
Year of construction	2027
Status	Under construction



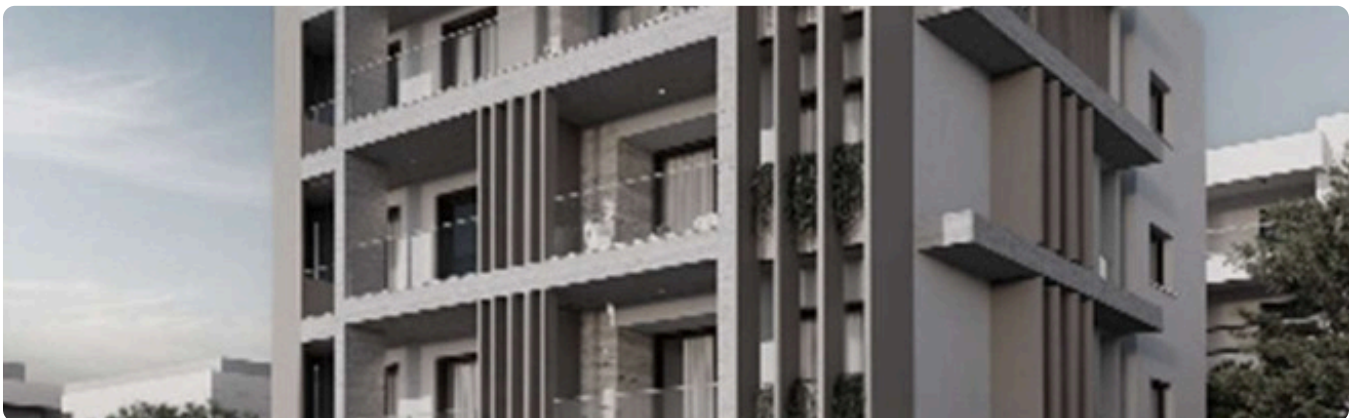
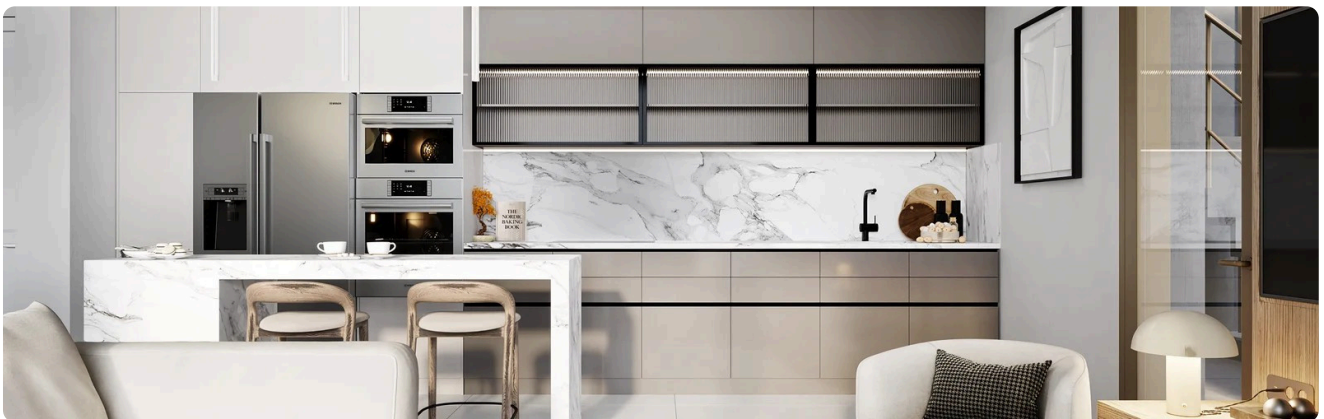
Facilities

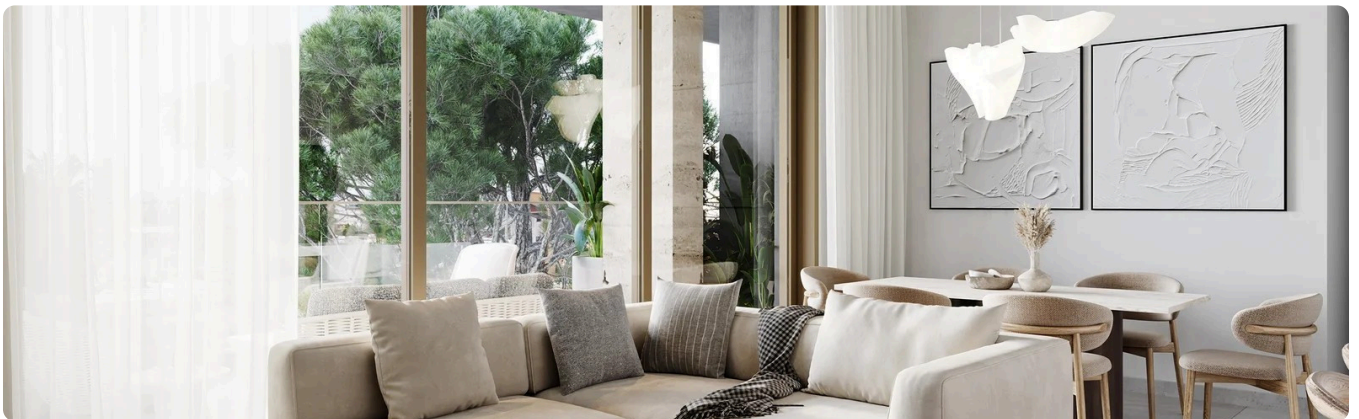
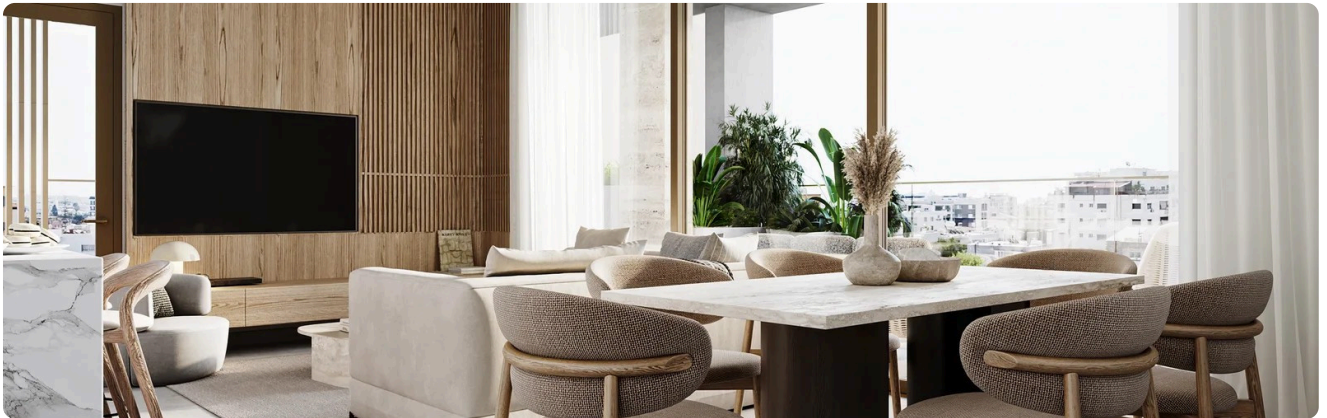
- ✓ Aircondition · Split system
 - ✓ Heating · Underfloor
 - ✓ Parking · Covered
 - ✓ Elevator
 - ✓ Storage
 - ✓ Solar water heater
 - ✓ Solar photovoltaic panels
-

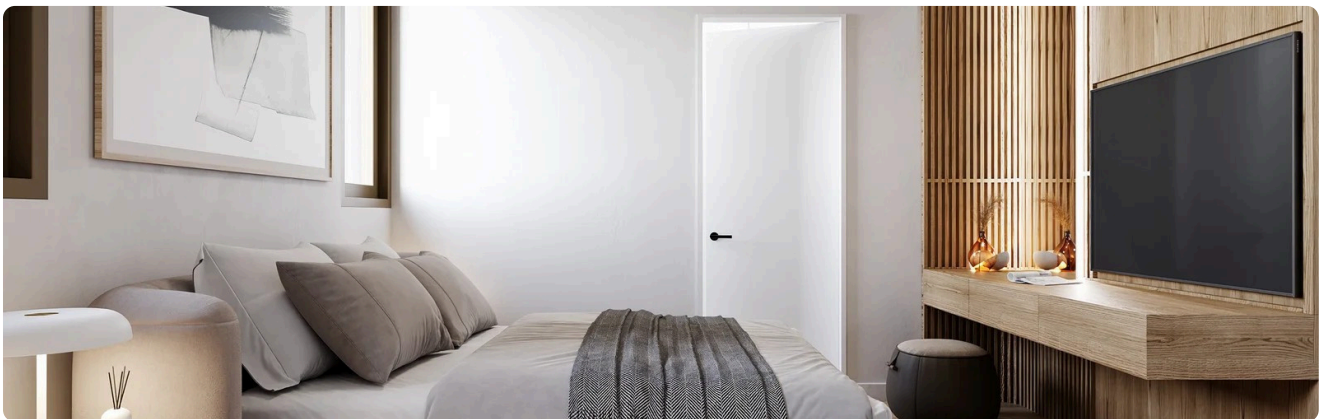
Features

- ✓ Veranda
 - ✓ CCTV
 - ✓ En suite bathroom
 - ✓ Luxury specifications
 - ✓ Modern design
 - ✓ Near amenities
 - ✓ Roof garden
 - ✓ Double glazing
 - ✓ Open plan
 - ✓ Walk-in closet
 - ✓ Pressurized water system
 - ✓ Electric car charger (provision)
 - ✓ High ceilings
 - ✓ Heart of city center
 - ✓ Easy access to main roads
 - ✓ Thermal insulation
-

Gallery







The floor plan shows a complex layout with various rooms and their dimensions:

- Top Section:** Includes a large room with dimensions 10.00 x 10.00, a room with 10.00 x 10.00, and a room with 10.00 x 10.00.
- Left Section:** Includes a room with 10.00 x 10.00, a room with 10.00 x 10.00, and a room with 10.00 x 10.00.
- Right Section:** Includes a room with 10.00 x 10.00, a room with 10.00 x 10.00, and a room with 10.00 x 10.00.
- Bottom Section:** Includes a room with 10.00 x 10.00, a room with 10.00 x 10.00, and a room with 10.00 x 10.00.

The plan also shows a central corridor and various rooms with furniture, including tables, chairs, and sofas. Dimensions are provided in meters (m) and centimeters (cm).



