



Reference 16731

1 Bed Apartment in Limassol City

Limassol Old City, Limassol

€268,000 +VAT

1 Bedroom | 1 Bathroom | 50 m² Covered

Description

- 1 bedroom
- 1 W/C
- Internal Area 50m²
- Covered Verandas 13.5m²
- Covered Parking
- A/C
- Storage
- Energy Efficiency "A"

Covered veranda	13.5 m ²
Parking spaces	1
Energy efficiency rating	A
Year of construction	2027
Status	Under construction



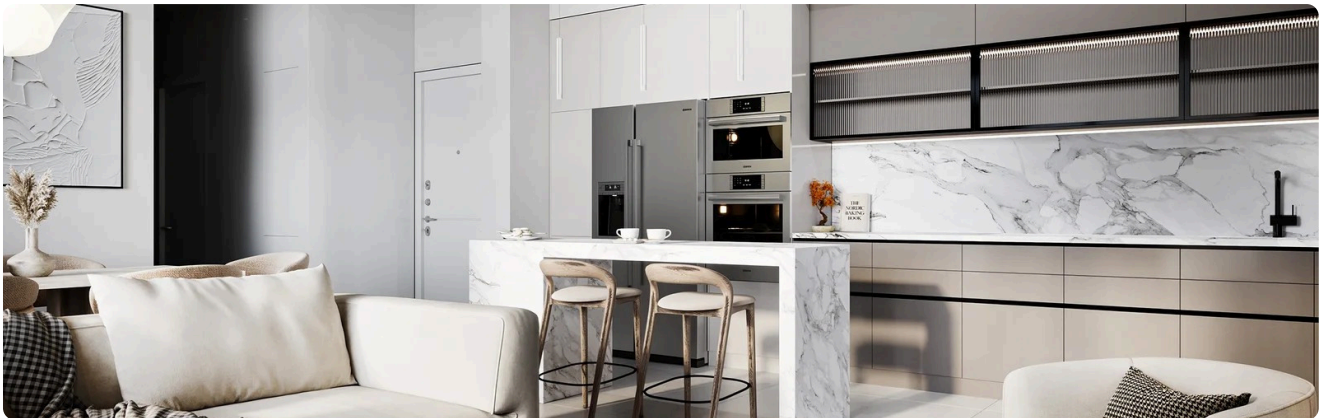
Facilities

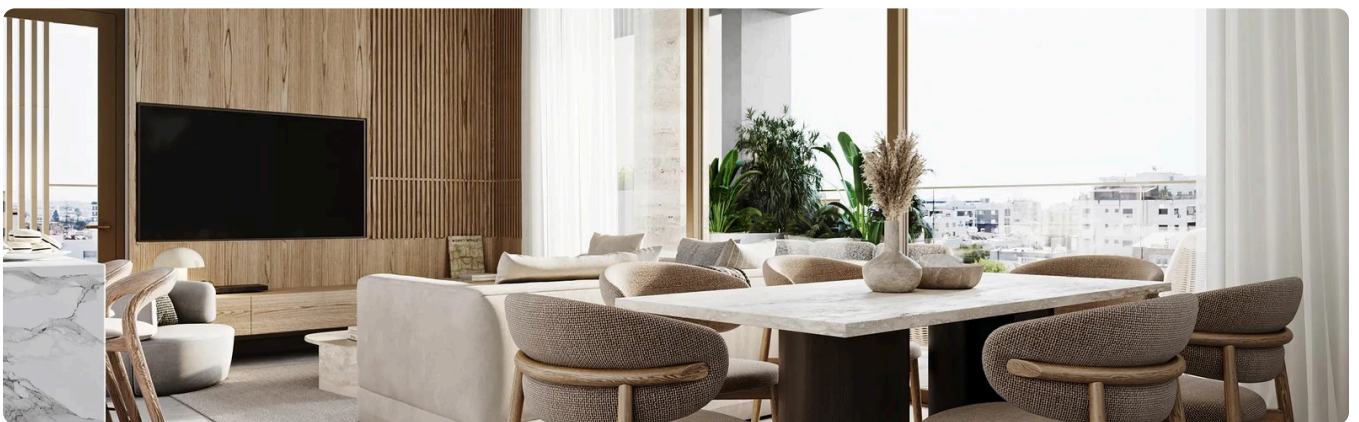
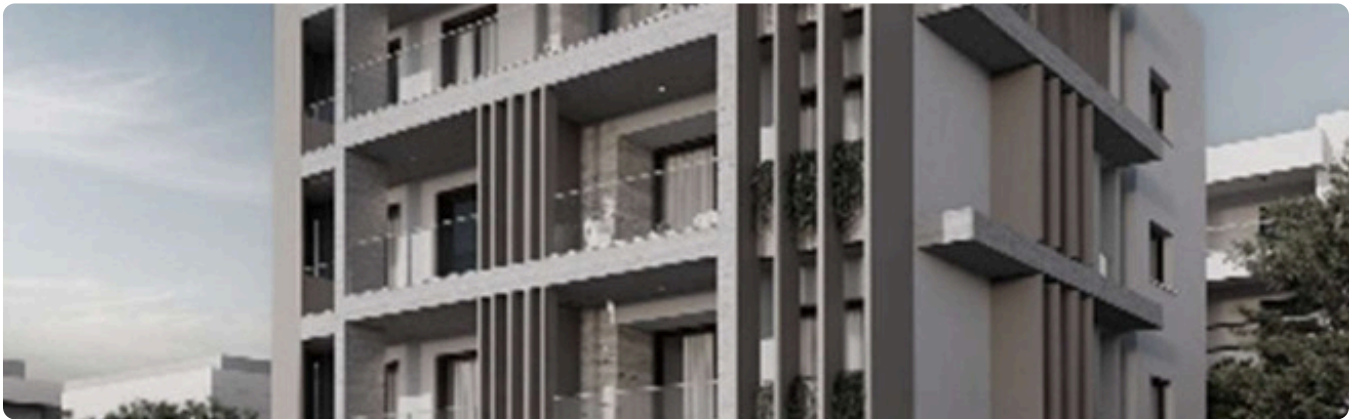
- ✓ Aircondition · Split system
 - ✓ Heating · Provision
 - ✓ Parking · Covered
 - ✓ Elevator
 - ✓ Storage
 - ✓ Solar water heater
-

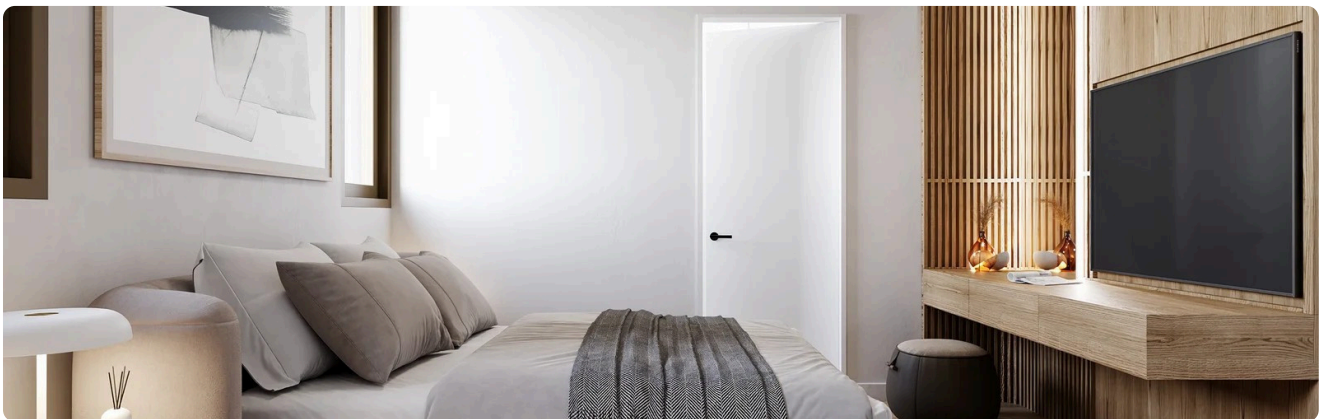
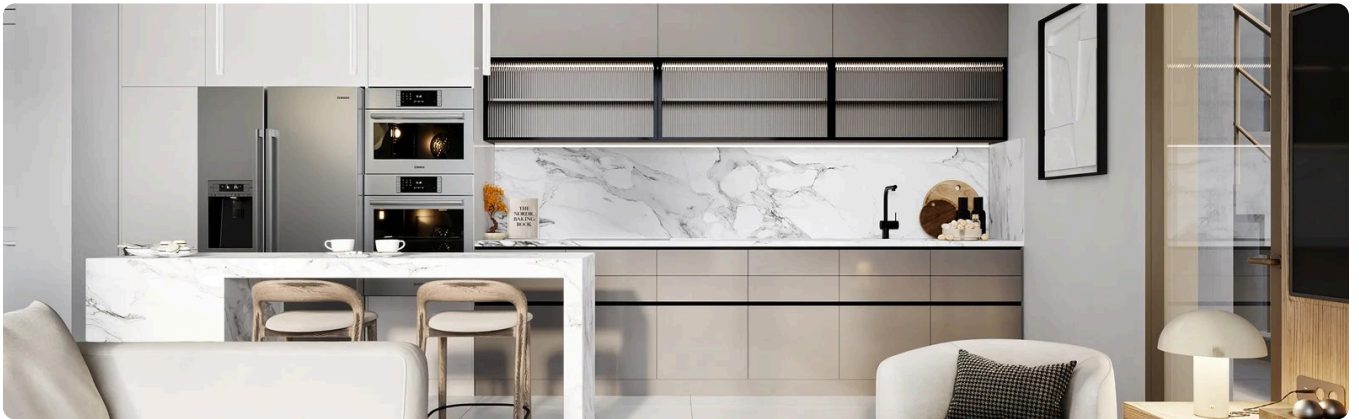
Features

- ✓ Veranda
 - ✓ CCTV
 - ✓ Luxury specifications
 - ✓ Modern design
 - ✓ Near amenities
 - ✓ Double glazing
 - ✓ Open plan
 - ✓ Pressurized water system
 - ✓ Electric car charger (provision)
 - ✓ High ceilings
 - ✓ Heart of city center
 - ✓ Easy access to main roads
 - ✓ Thermal insulation
-

Gallery







The floor plan illustrates the 1st floor of a building, featuring a central staircase and multiple living and dining areas. The plan is oriented with North at the top. It includes a grid system with letters A through Z and numbers 1 through 12. The plan also shows various doors, windows, and furniture placement.



