



Reference 16665

2 Bed Apartment in Polemidia, Limassol

€285,000 +VAT

Kato Polemidia, Limassol

2 Bedrooms | 2 Bathrooms | 76 m² Covered

Description

- 2 bedrooms
- 2 W/C
- Internal Area 76m²
- Covered Verandas 15m²
- Covered Parking
- Storage

Covered veranda 15 m²

Parking spaces 1

Energy efficiency rating A

Year of construction 2026

Status Under construction



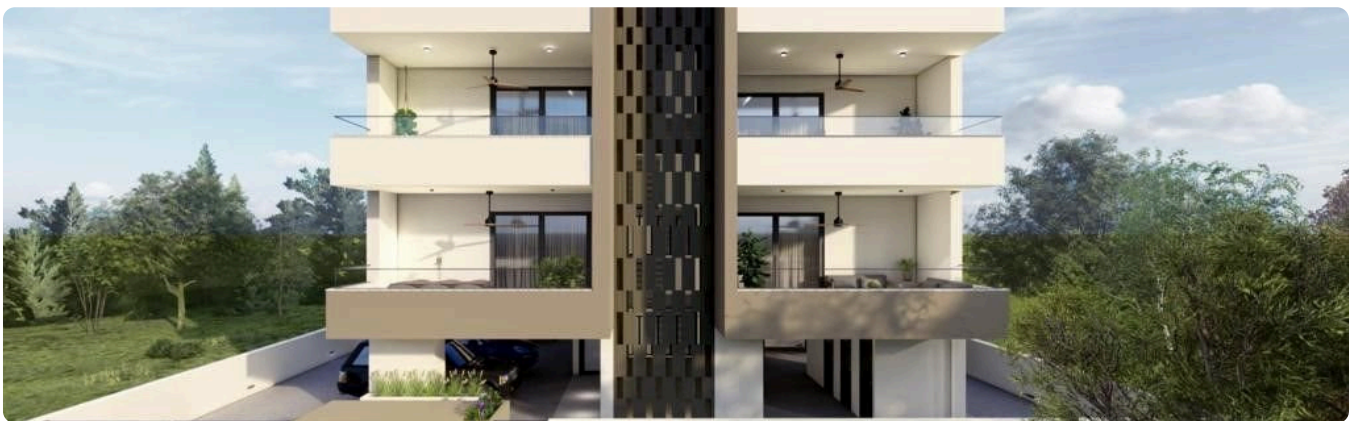
Facilities

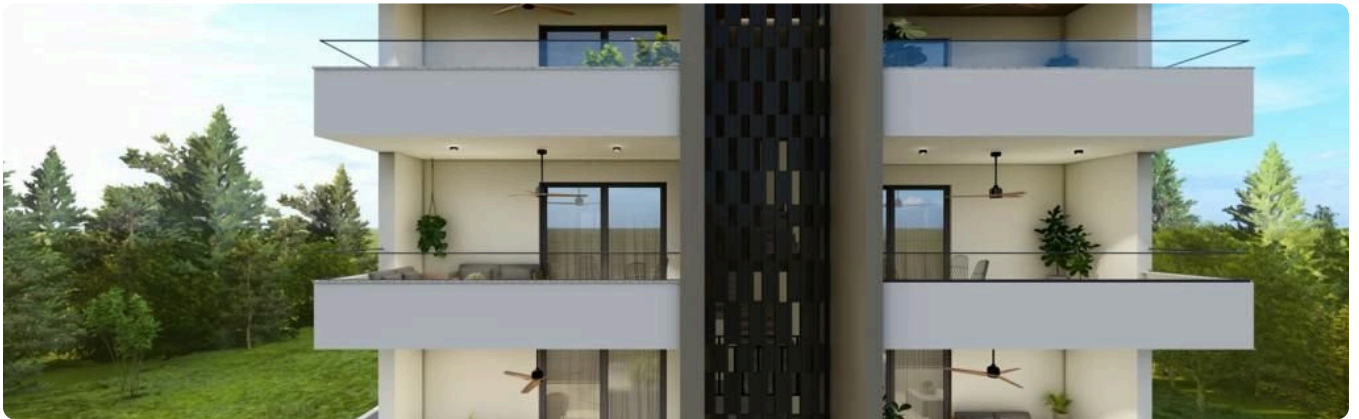
✓ Aircondition · Provision ✓ Parking · Covered ✓ Storage ✓ Solar water heater

Features

✓ Veranda ✓ Ceramic tiles ✓ Modern design ✓ Near amenities ✓ Double glazing
✓ Open plan ✓ Pressurized water system ✓ Electric car charger (provision)
✓ Pipe-in-pipe plumbing system ✓ Easy access to main roads ✓ Thermal insulation

Gallery









Floor plans

