



Reference 16573

## 2 Bed Penthouse in Dromolaxia

**€189,000** +VAT

Dromolaxia, Larnaca

2 Bedrooms

2 Bathrooms

73.9 m<sup>2</sup> Covered

### Description

- 2 Bedrooms
- 2 W/C
- Internal Area 73.9m<sup>2</sup>
- Covered Verandas 24.3m<sup>2</sup>
- Covered Parking
- Storage
- Energy Efficiency "A"

Covered veranda	24.3 m <sup>2</sup>
Parking spaces	1
Energy efficiency rating	A
Year of construction	2027
Status	Off plan



## Facilities

✓ Aircondition · Provision    ✓ Parking · Covered    ✓ Storage

---

## Features

✓ En suite bathroom    ✓ Near bus route    ✓ Near amenities    ✓ Double glazing    ✓ Open plan  
✓ Pressurized water system    ✓ Kitchen island    ✓ Easy access to main roads  
✓ Easy access to highway

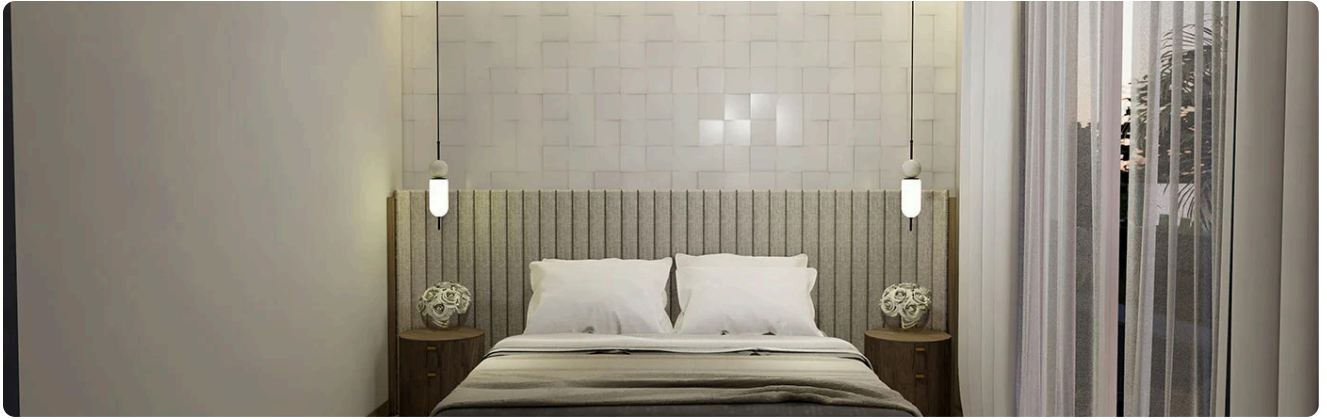
---

## Gallery

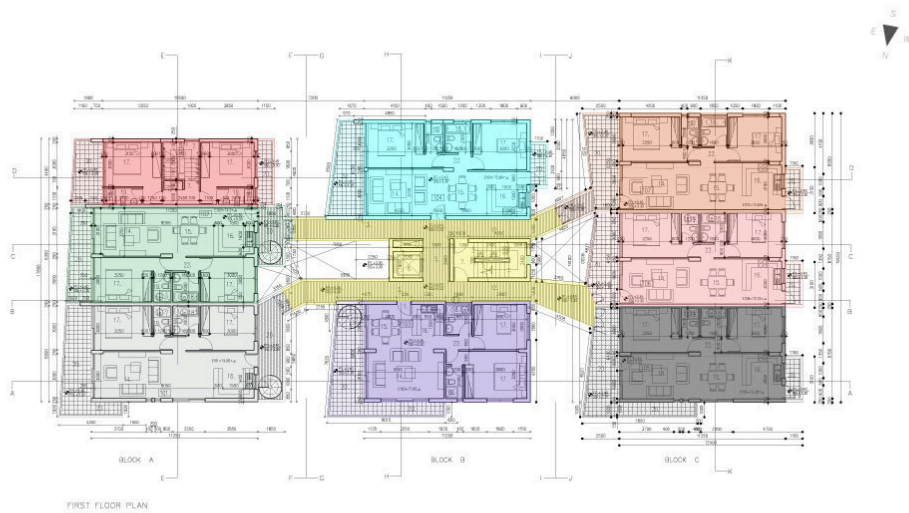
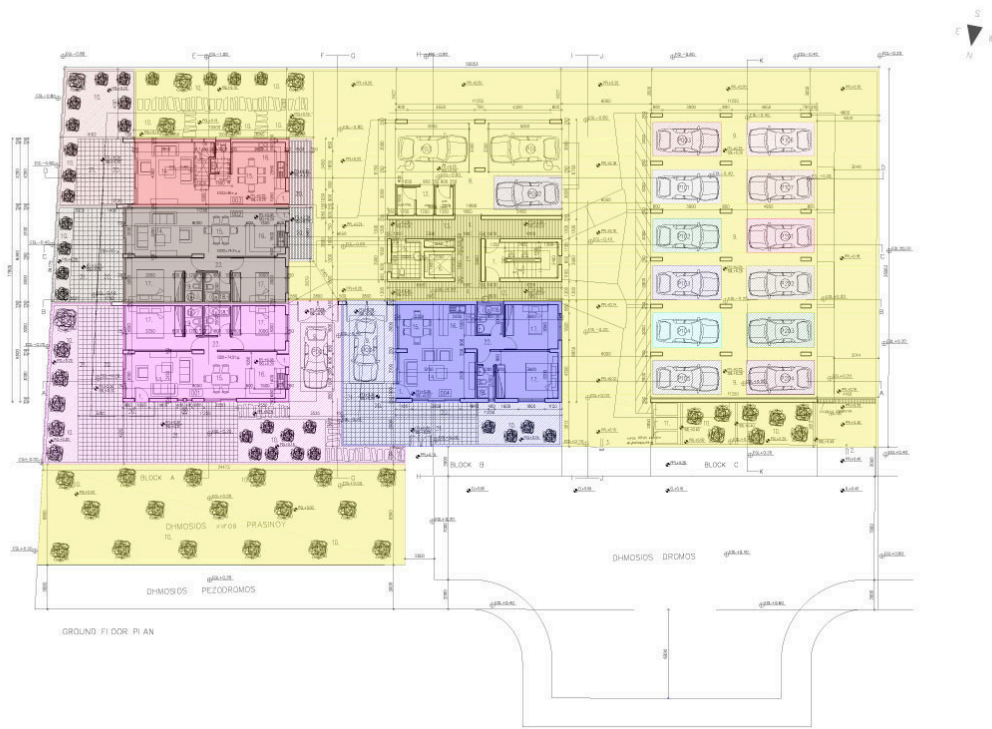


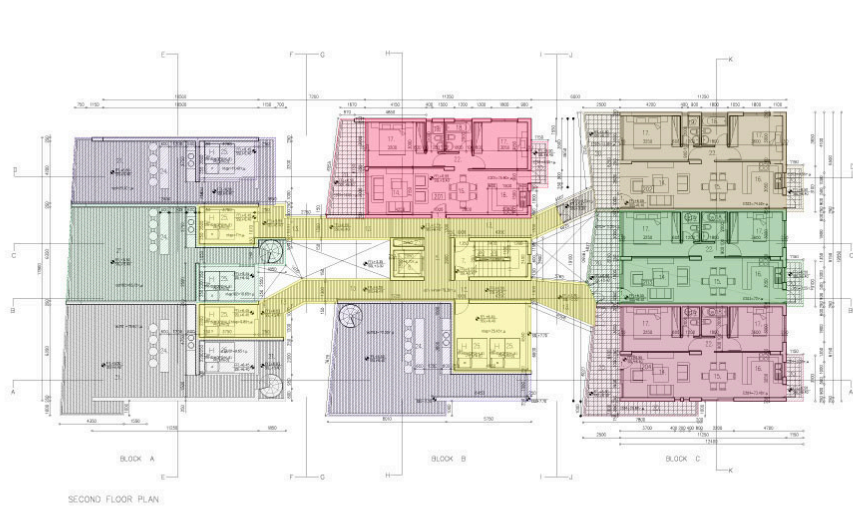






# Floor plans





SECOND FLOOR PLAN

