



Reference 16562

2 Bed Apartment in Germasogeia, Limassol

€410,000 +VAT

Germasogia, Limassol

2 Bedrooms | 2 Bathrooms | 83.15 m² Covered

Description

- 2 bedrooms
- 2 W/C
- Internal Area 83.15m²
- Covered Verandas 25.05m²
- Covered Parking
- Communal Swimming Pool
- Gym & Sauna
- Storage
- Energy Efficiency "A"

Covered veranda	25.05 m ²
Parking spaces	1
Energy efficiency rating	A
Year of construction	2029
Status	Off plan



Facilities

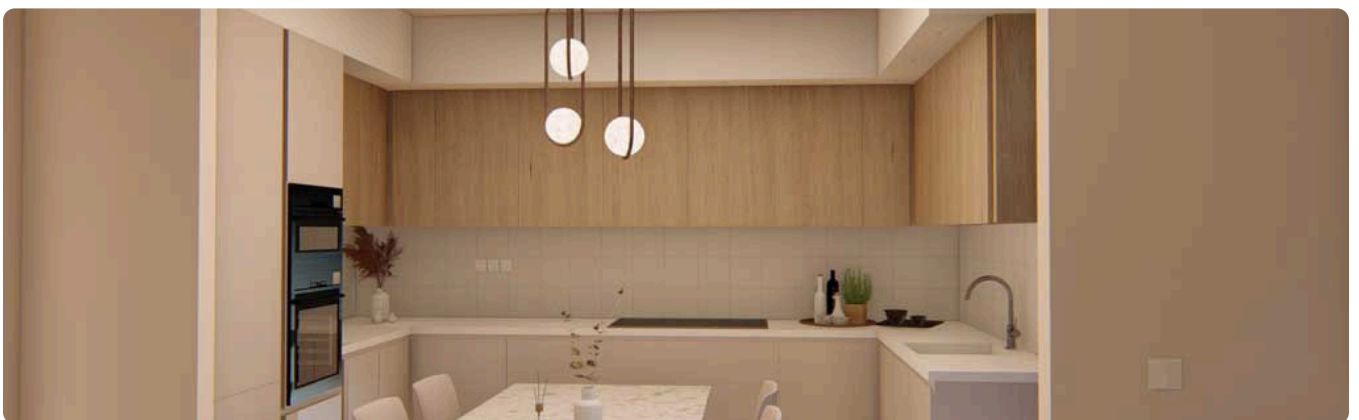
- ✓ Aircondition · Provision ✓ Heating · Provision ✓ Parking · Covered ✓ Pool · Communal
- ✓ Elevator ✓ Gym ✓ Sauna ✓ Storage
-

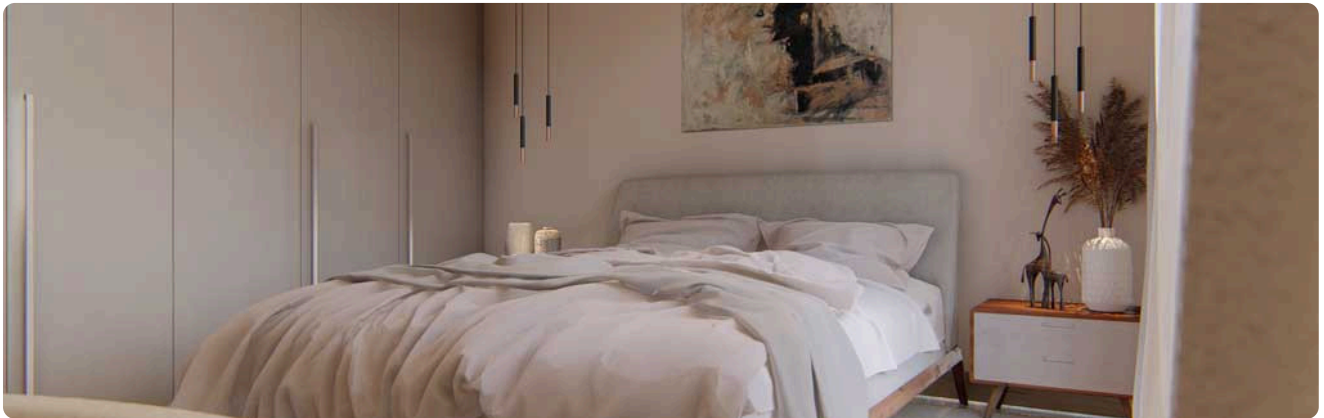
Features

- ✓ Veranda ✓ Laminate flooring ✓ Ceramic tiles ✓ Modern design ✓ Sea view
- ✓ Near amenities ✓ Double glazing ✓ Open plan ✓ City view ✓ Bright ✓ High ceilings
- ✓ Easy access to highway ✓ Thermal insulation
-

Gallery

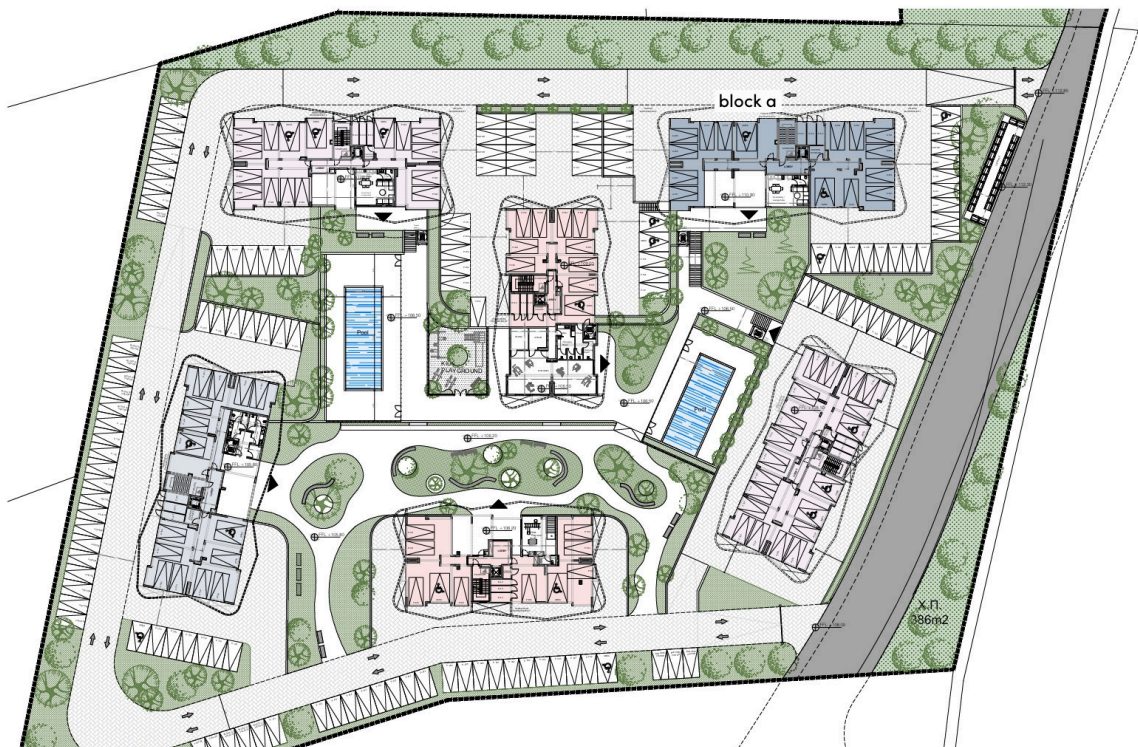






Floor plans

masterplan



block a
ground floor



block a
floor 1



block a

floor 2



block a

floor 3



block a

floor 4



block a

floor 5

