



Reference 16526

## 2 Bed Apartment in Katholiki, Limassol

**€450,000** +VAT

Katholiki, Limassol

2 Bedrooms

2 Bathrooms

81.98 m<sup>2</sup> Covered

### Description

- 2 bedrooms
- 2 W/C
- Internal Area 81.98m<sup>2</sup>
- Covered Verandas 20.37m<sup>2</sup>
- Covered Parking
- Storage
- Energy Efficiency "A"

|                          |                      |
|--------------------------|----------------------|
| Covered veranda          | 20.37 m <sup>2</sup> |
| Parking spaces           | 1                    |
| Energy efficiency rating | A                    |
| Year of construction     | 2027                 |
| Status                   | Under construction   |



## Facilities

✓ Parking · Covered   ✓ Elevator   ✓ Storage

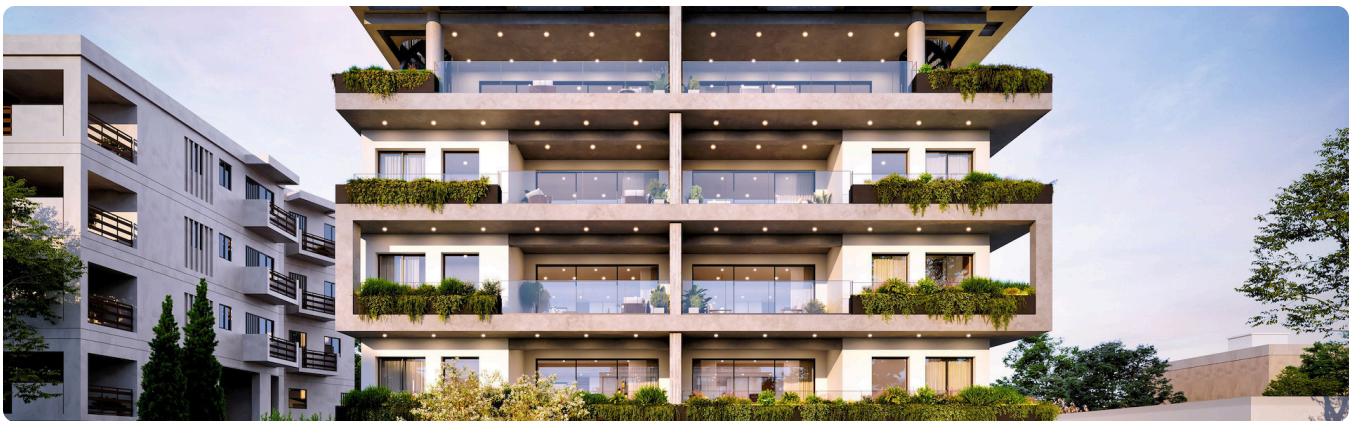
---

## Features

✓ Modern design   ✓ Near amenities   ✓ Double glazing   ✓ Open plan  
✓ Easy access to main roads   ✓ Thermal insulation

---

## Gallery

















## Floor plans

