



Reference 16524

1 Bed Apartment in Katholiki, Limassol

€300,000 +VAT

Katholiki, Limassol

1 Bedroom | 1 Bathroom | 50.06 m² Covered

Description

- 1 bedroom
- 1 W/C
- Internal Area 50.06m²
- Covered Verandas 9.66m²
- Covered Parking
- Storage
- Energy Efficiency "A"

Covered veranda	9.66 m ²
Parking spaces	1
Energy efficiency rating	A
Year of construction	2027
Status	Under construction



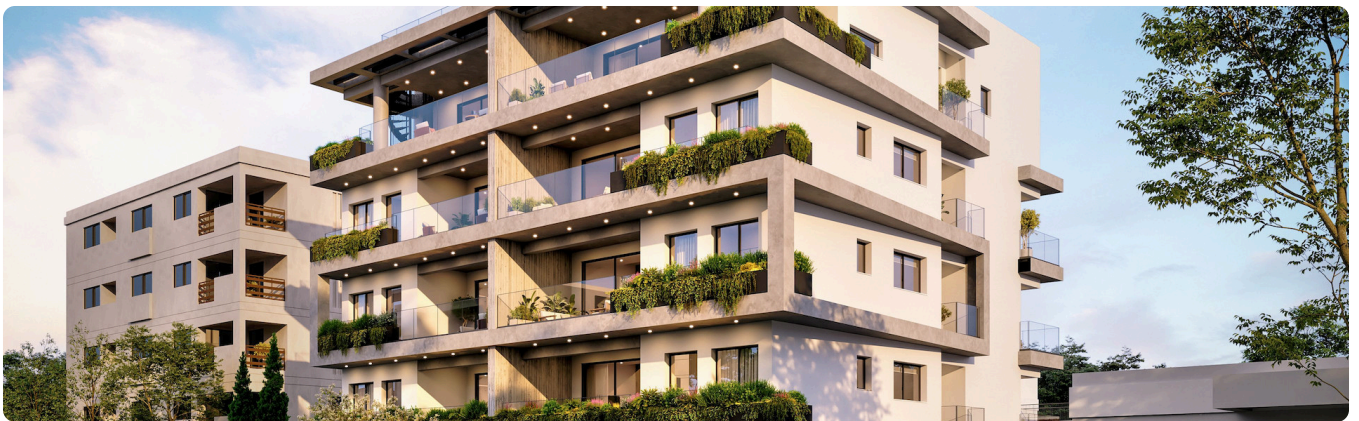
Facilities

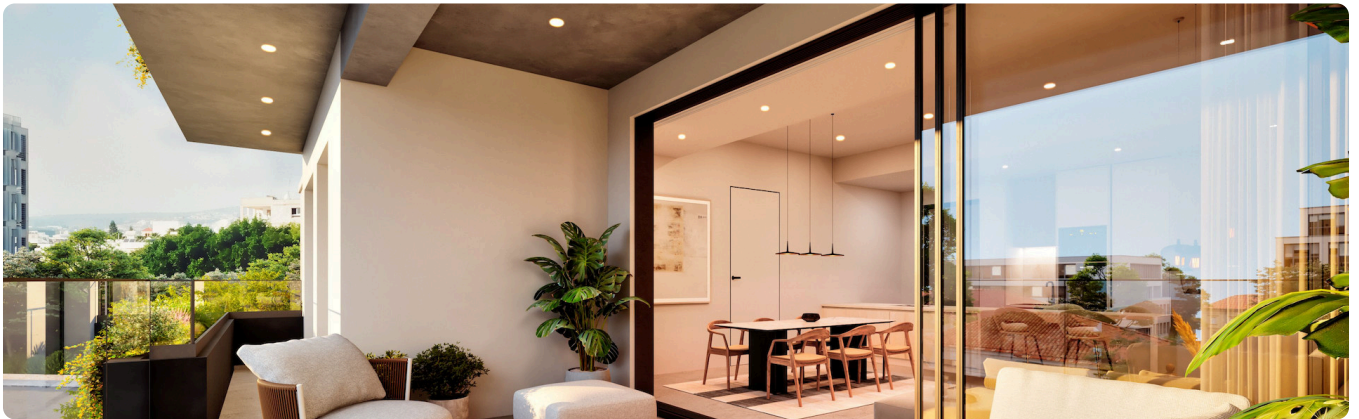
✓ Parking · Covered ✓ Elevator ✓ Storage

Features

✓ Modern design ✓ Near amenities ✓ Double glazing ✓ Open plan
✓ Easy access to main roads ✓ Thermal insulation

Gallery









Floor plans

