



Reference 1626

2 Bed Apartment in Tseri

€149,000 +VAT

Tseri, Nicosia

2 Bedrooms

2 Bathrooms

78.2 m² Covered

Description

- ◆ 2 Bedrooms
- ◆ 2 W/C
- ◆ Internal Area 78.2m²
- ◆ Covered Verandas 19.7m²
- ◆ Energy Efficiency A

Covered veranda **19.7 m²**

Energy efficiency rating **A**

Status **Under construction**



Facilities

✓ Aircondition · Provision

✓ Heating · Provision

Features

✓ Pressurized water system

✓ Sound insulation

✓ Thermal insulation

Gallery



Floor plans

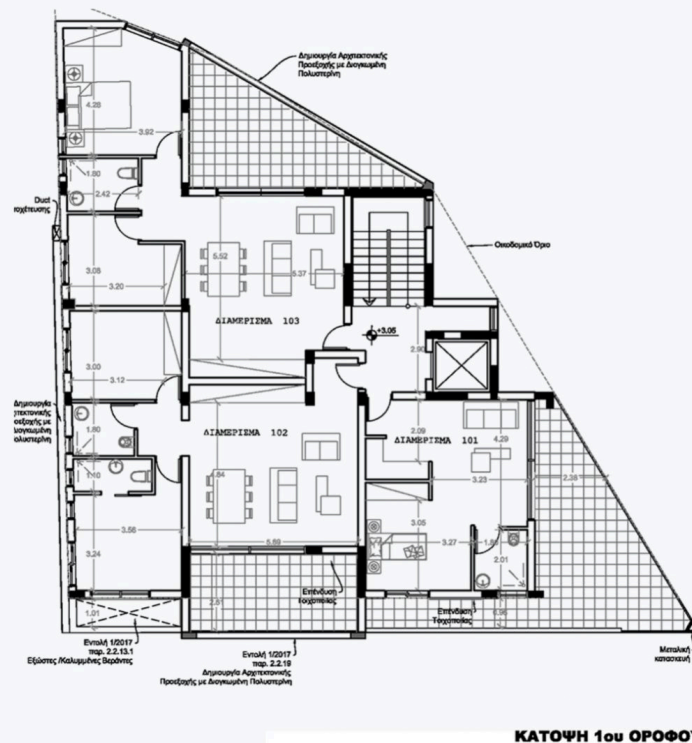
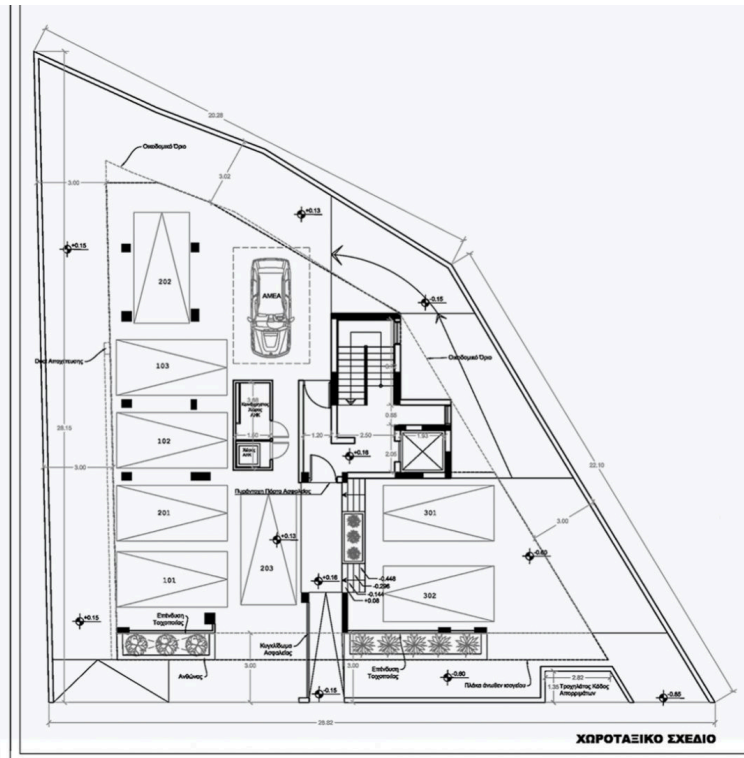
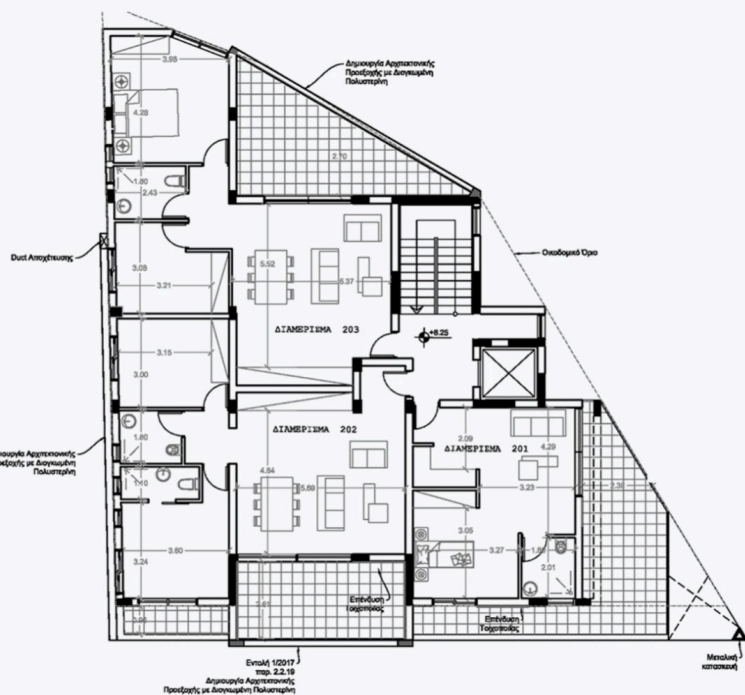
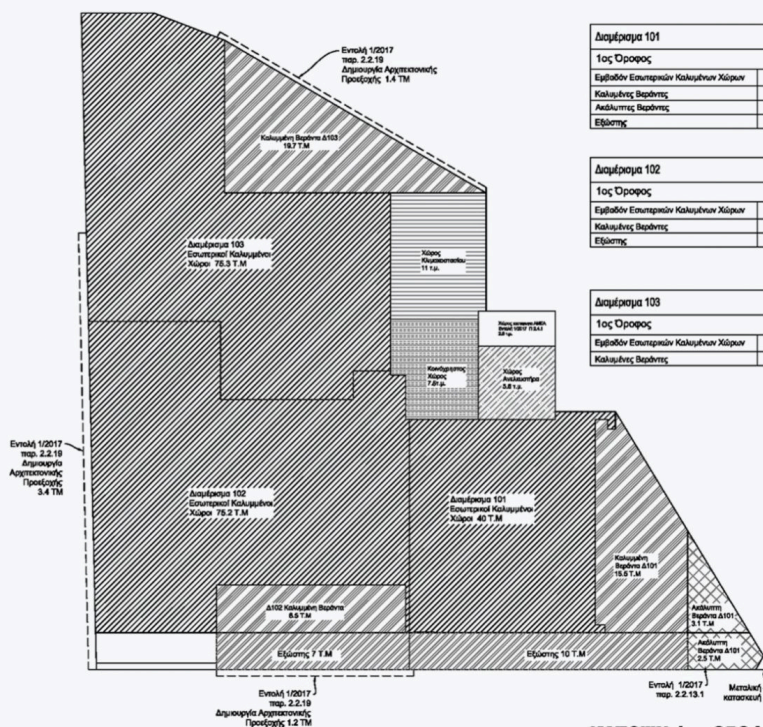


Figure 1: Schematic representation of the four components of the 1000 Genomes Project. The diagram shows four overlapping rectangular regions representing different data types: SNPs (diagonal lines), Haplotypes (horizontal lines), Sequences (vertical lines), and Genotypes (cross-hatch pattern). Each region is labeled with its name and size in Gb.

Component	Size (Gb)
SNPs	0.8 Gb
Haplotypes	11 Gb
Sequences	14.3 Gb
Genotypes	0.8 Gb

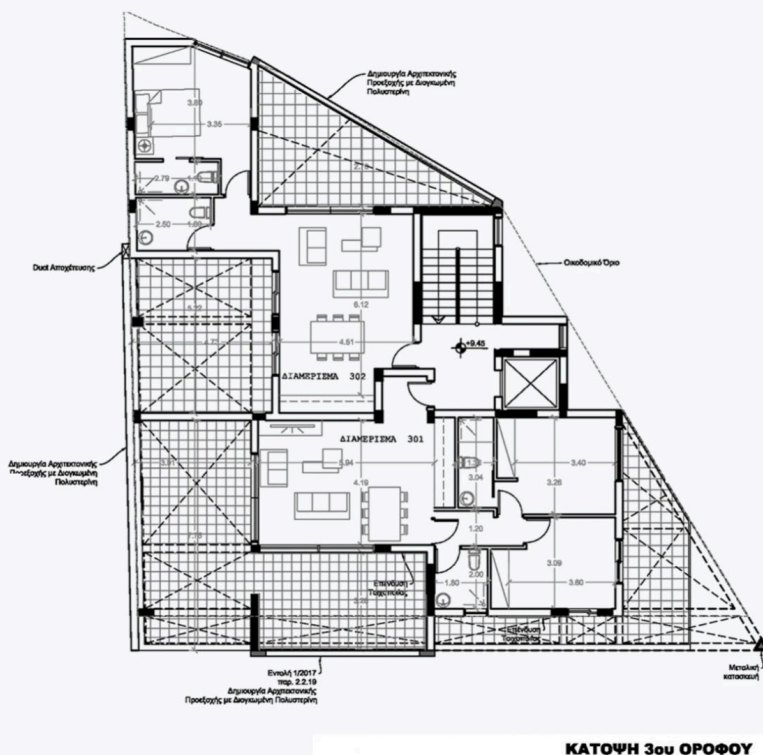
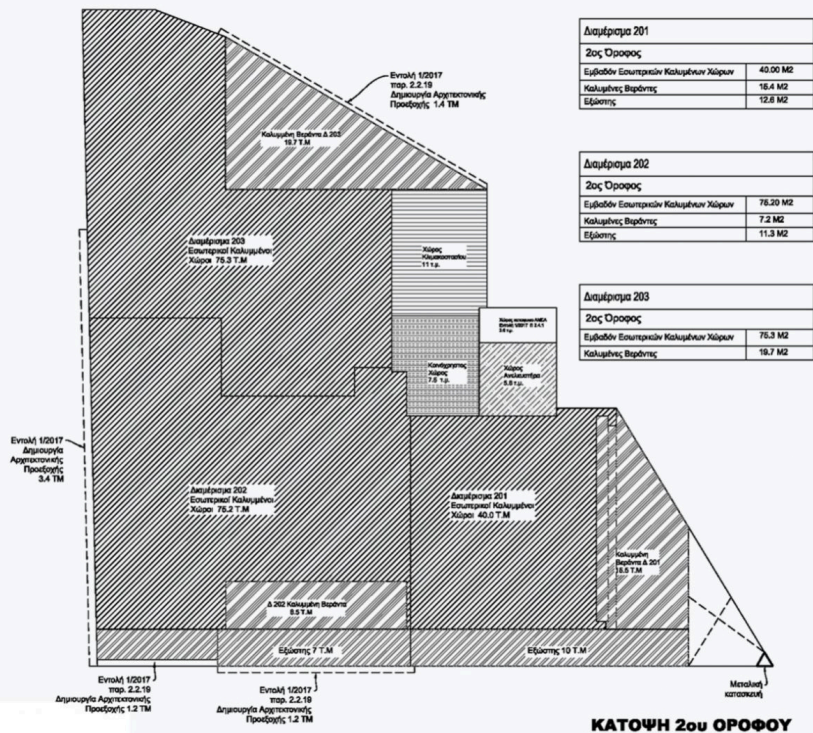
Διαμέρισμα 102	
1ος Όροφος	
Εμβαδόν Εσωτερικών Καλυμμένων Χώρων	75.20 M2
Καλυμμένες Βαράντες	7.2 M2
Εξώστες	17 M2

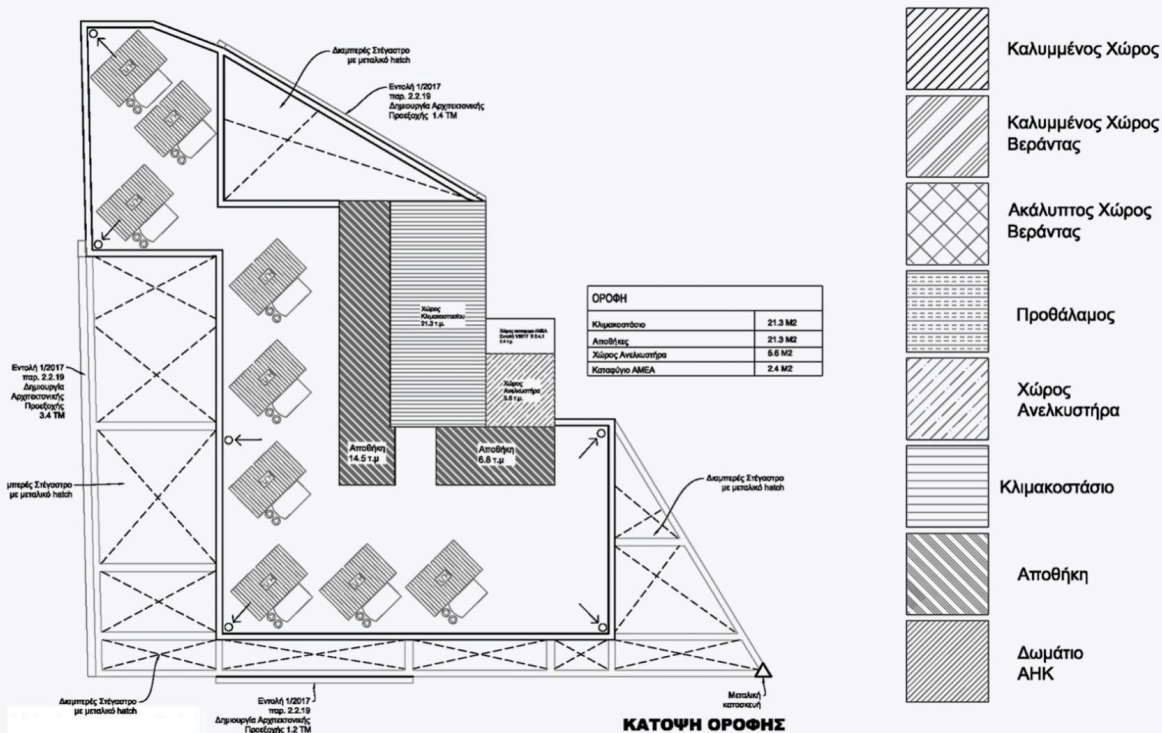
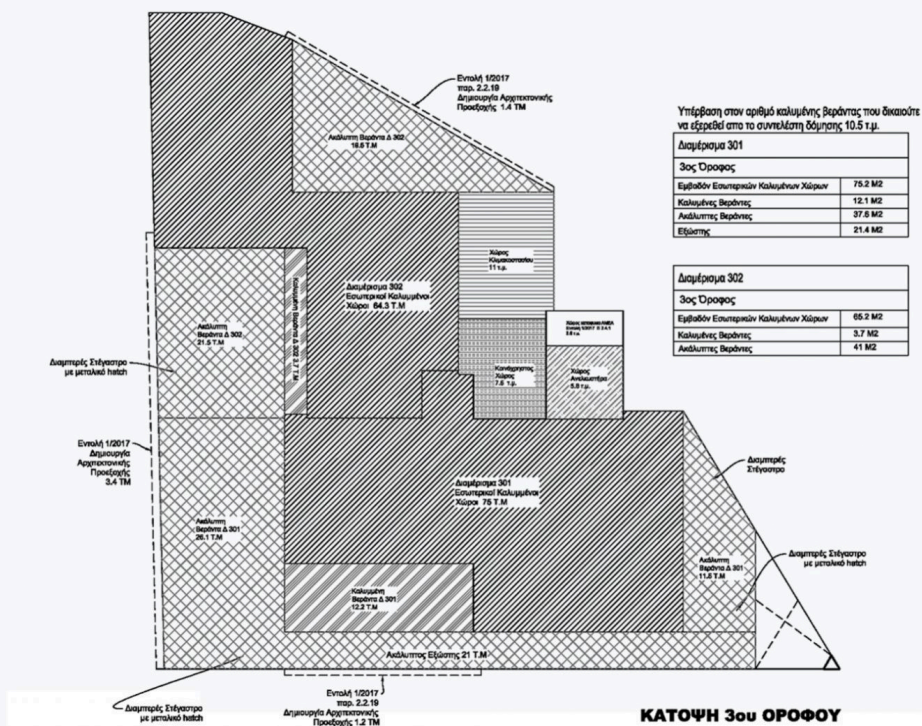
Διαμέρισμα 103	
1ος Όροφος	
Εμβαδόν Εσωτερικών Καλυμμένων Χώρων	75.3 Μ2
Καλυμμένες Βεράντες	19.7 Μ2

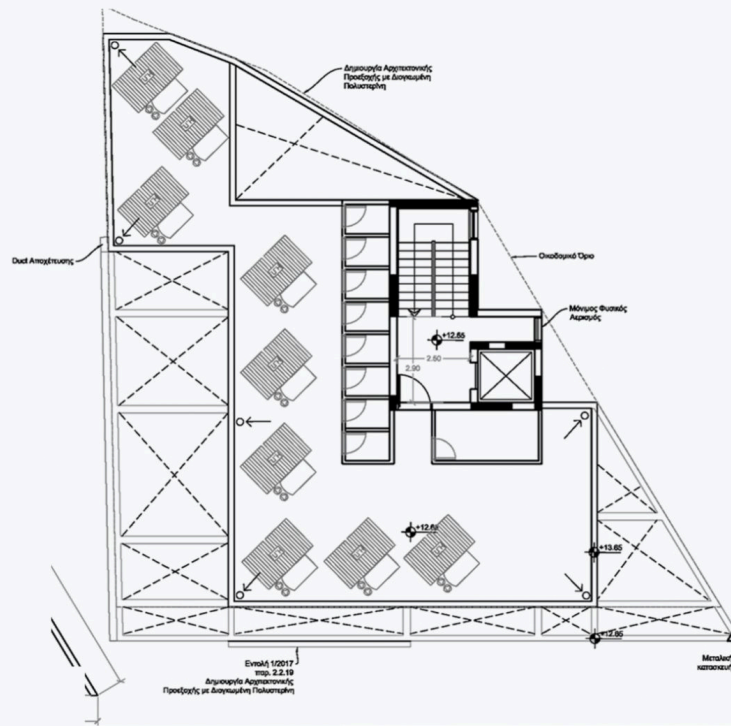


ΚΑΤΟΨΗ 2ου ΟΡΟΦΟΥ









ΚΑΤΩΦΗ ΟΡΟΦΗΣ

