



Reference 15916

## 2 Bed Penthouse Apartment with roof garden in Mesa Geitonia, Limassol

**€459,000** +VAT

Mesa Geitonia, Limassol

2 Bedrooms | 2 Bathrooms | 75 m<sup>2</sup> Covered

### Description

- 2 bedrooms
- 2 W/C
- Internal Area 79m<sup>2</sup>
- Covered Verandas 19m<sup>2</sup>
- Roof Garden 28m<sup>2</sup>
- Covered Parking
- Storage
- Energy Efficiency "A"

Covered veranda	19 m <sup>2</sup>
Roof garden	28 m <sup>2</sup>
Parking spaces	1
Energy efficiency rating	A
Year of construction	2027
Status	Off plan



## Facilities

✓ Parking · Covered   ✓ Elevator   ✓ Storage

---

## Features

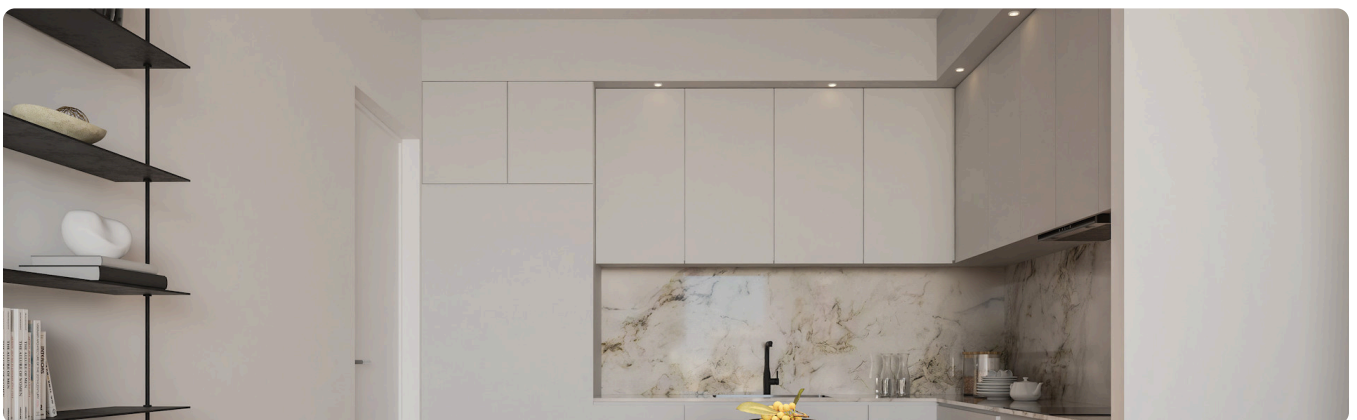
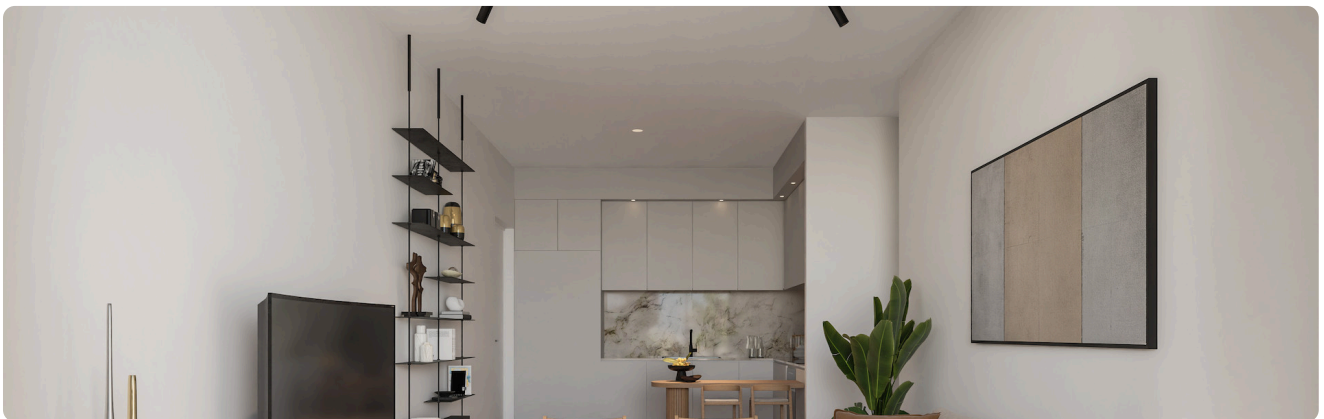
✓ Veranda   ✓ Ceramic tiles   ✓ En suite bathroom   ✓ Modern design   ✓ Near amenities  
✓ Roof garden   ✓ Double glazing   ✓ Open plan   ✓ Investment opportunity  
✓ Easy access to highway   ✓ Thermal insulation

---

## Gallery











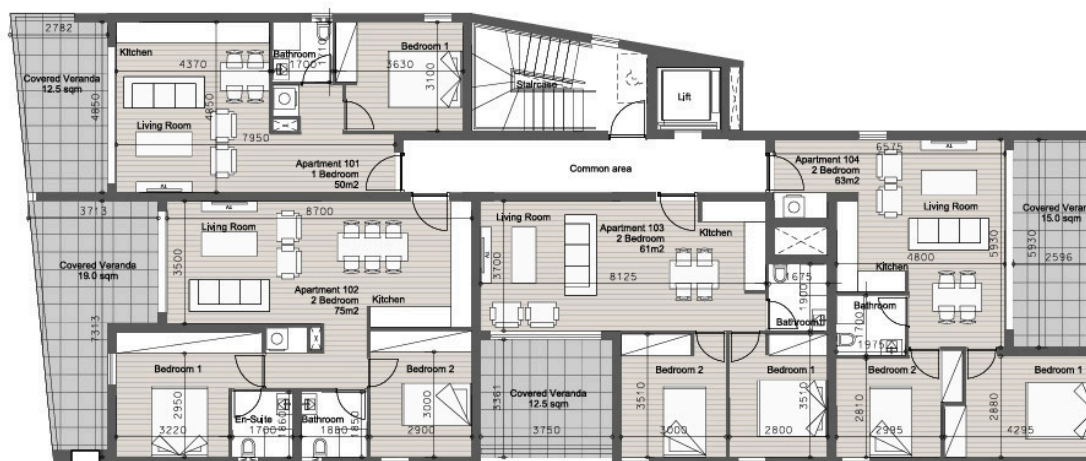


## Floor plans

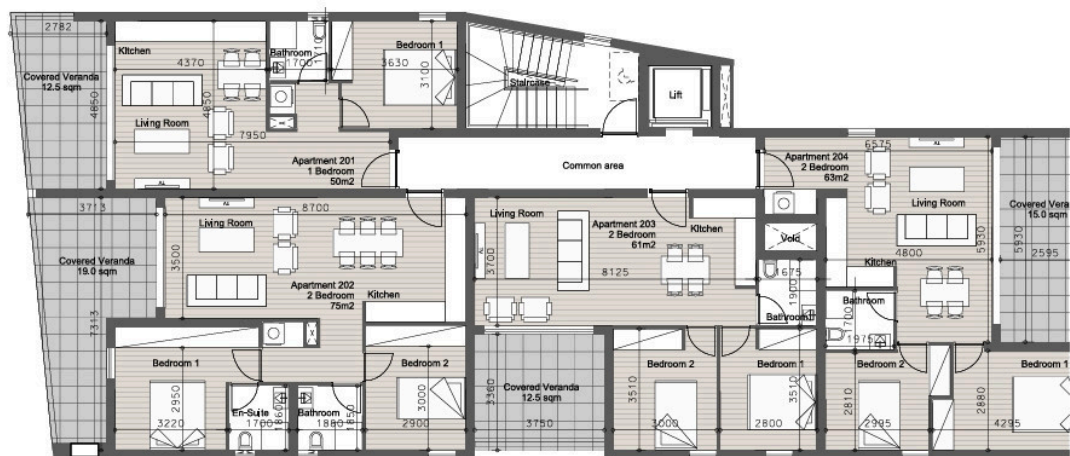
### Ground Floor



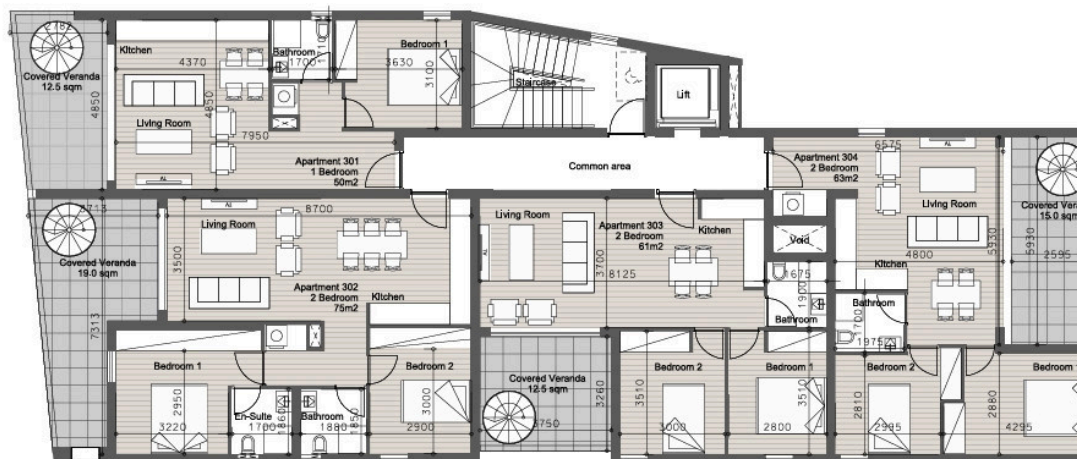
### First Floor



## Second Floor



## Third Floor



# Roof Garden

The floor plan illustrates a roof garden area with the following details:

- Roof Garden Apartment 301:** 21.0m<sup>2</sup>, featuring a Living Area, BBQ, and a circular planter area (3035).
- Roof Garden Apartment 302:** 28.0m<sup>2</sup>, featuring a Living Area, BBQ, and a circular planter area (4778).
- Roof Garden Apartment 303:** 14.0m<sup>2</sup>, featuring a Living Area, BBQ, and a circular planter area (3350).
- Roof Garden Apartment 304:** 23.0m<sup>2</sup>, featuring a Living Area, BBQ, and a circular planter area (3358).
- Common area:** Includes a staircase (Staircase), a utility room (UR), and several storage units (Storage 201, Storage 202).
- MEP:** Mechanical, Electrical, and Plumbing rooms are located in the central and right portions of the plan.
- Planter:** A green planter area is located at the bottom right of the plan.