



Reference 15903

## 1 Bed Apartment in Mesa Geitonia, Limassol

**€249,000** +VAT

Mesa Geitonia, Limassol

1 Bedroom | 1 Bathroom | 50 m<sup>2</sup> Covered

### Description

- 1 bedroom
- 1 W/C
- Internal Area 50m<sup>2</sup>
- Covered Verandas 12.5m<sup>2</sup>
- Covered Parking
- Storage
- Energy Efficiency "A"

Covered veranda	12.5 m <sup>2</sup>
Parking spaces	1
Energy efficiency rating	A
Year of construction	2027
Status	Off plan



## Facilities

✓ Parking · Covered    ✓ Elevator    ✓ Storage

---

## Features

✓ Veranda    ✓ Ceramic tiles    ✓ Modern design    ✓ Near amenities    ✓ Double glazing  
✓ Open plan    ✓ Investment opportunity    ✓ Easy access to highway    ✓ Thermal insulation

---

## Gallery











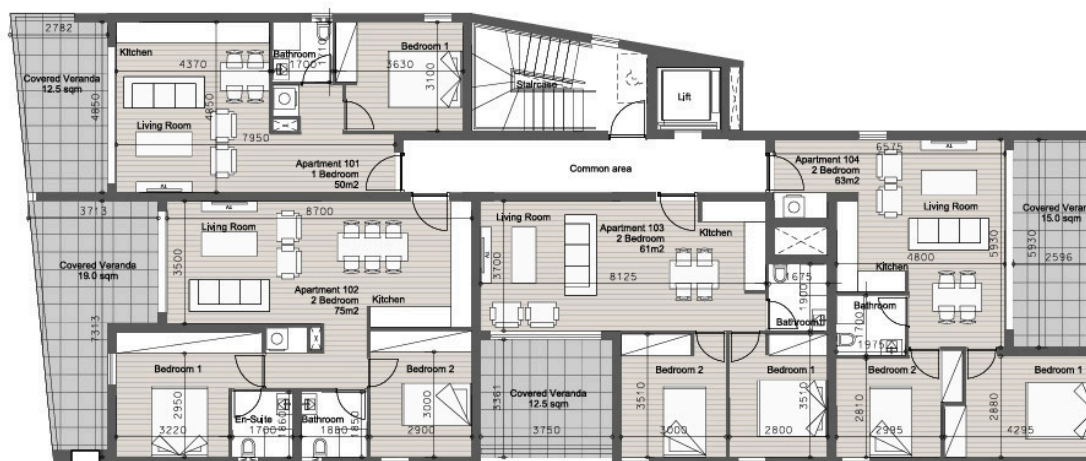


## Floor plans

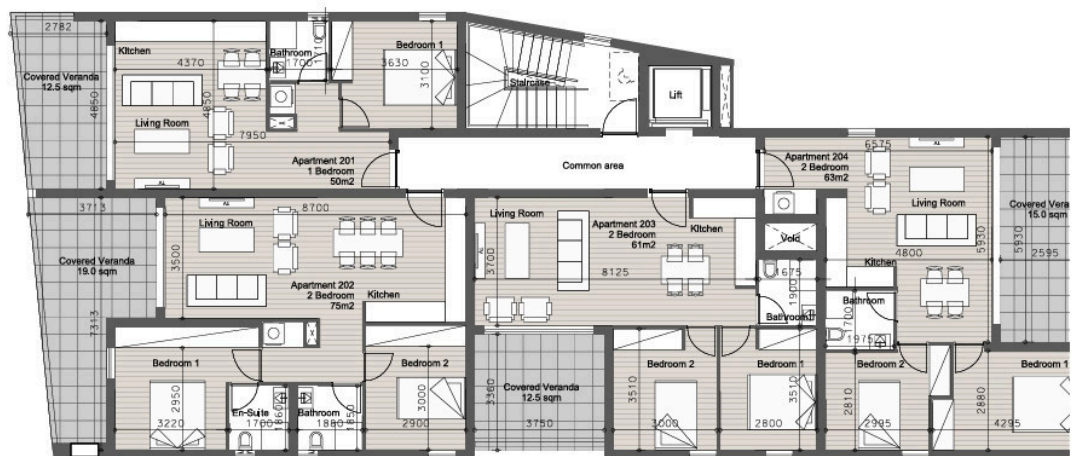
### Ground Floor



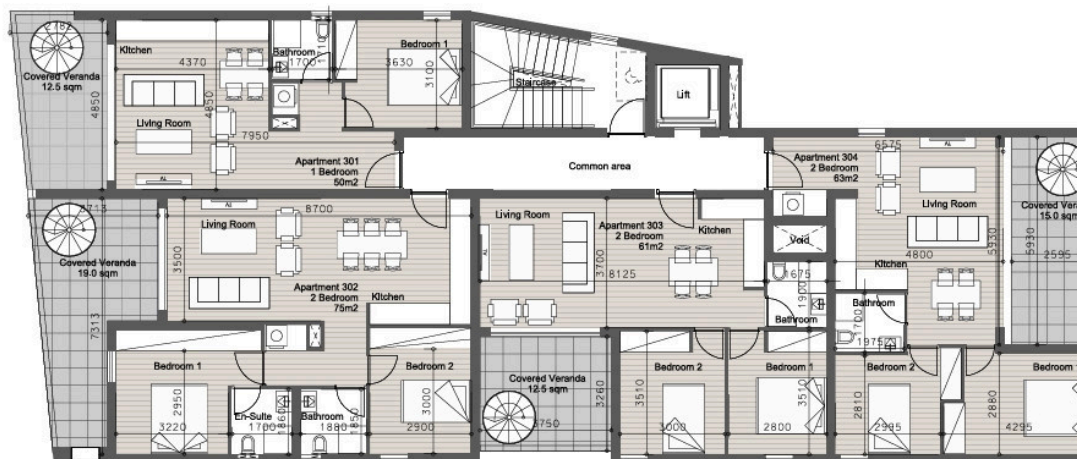
### First Floor



## Second Floor



## Third Floor



# Roof Garden

The diagram illustrates the layout of a roof garden area, divided into four apartment units and a central common area. Each unit includes a living area, a BBQ, and a planter. The common area features a staircase, storage rooms, and a utility room (UR). MEP rooms are also indicated.

- Roof Garden Apartment 301:** 21.0m<sup>2</sup>. Includes a Living Area, BBQ, and a planter.
- Roof Garden Apartment 302:** 28.0m<sup>2</sup>. Includes a Living Area, BBQ, and a planter.
- Roof Garden Apartment 303:** 14.0m<sup>2</sup>. Includes a Living Area, BBQ, and a planter.
- Roof Garden Apartment 304:** 23.0m<sup>2</sup>. Includes a Living Area, BBQ, and a planter.
- Common area:** Includes a staircase, storage rooms (Storage 201, Storage 202), and a utility room (UR).
- MEP:** Mechanical, Electrical, and Plumbing rooms are located in the central area.