



Reference 15756

3 Bed Apartment in Limassol, close to Marina

€1,400,000 +VAT

Limassol Marina, Limassol

3 Bedrooms | 2 Bathrooms | 119 m² Covered

Description

- 3 bedrooms
- 2 W/C
- Internal Area 119m²
- Covered Verandas 35m²
- Covered Parking
- Communal Indoor & Outdoor Swimming Pool
- Gym & Sauna
- Sea View
- 24h Services
- Close to several amenities
- Energy Efficiency "A"

Covered veranda	35 m ²
Parking spaces	1
Energy efficiency rating	A
Year of construction	2026
Status	Under construction



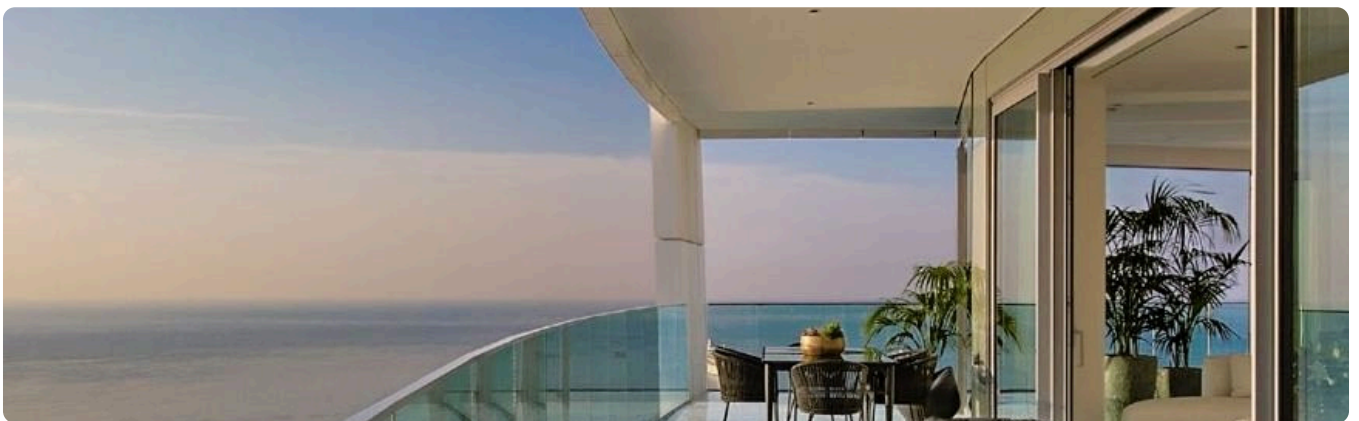
Facilities

✓ Parking · Covered ✓ Pool · Communal ✓ Indoor pool · Communal ✓ Gym ✓ Sauna

Features

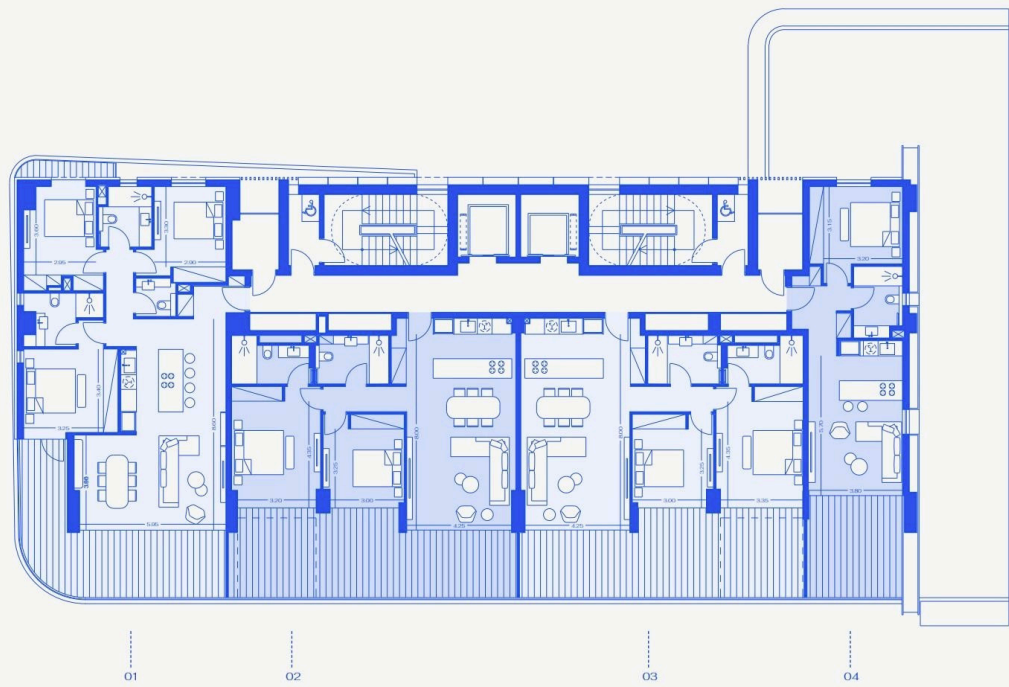
✓ Guest WC ✓ Veranda ✓ En suite bathroom ✓ Luxury specifications ✓ Modern design
✓ Sea view ✓ Sea front ✓ Near amenities ✓ Open plan ✓ Combined kitchen and dining area
✓ Spacious rooms

Gallery





Floor plans



LEVEL 3

Floorplans and dimensions displayed are indicative and may vary from level to level.



LEVELS 4-10

Floorplans and dimensions displayed are indicative and may vary from level to level.





LEVEL 11

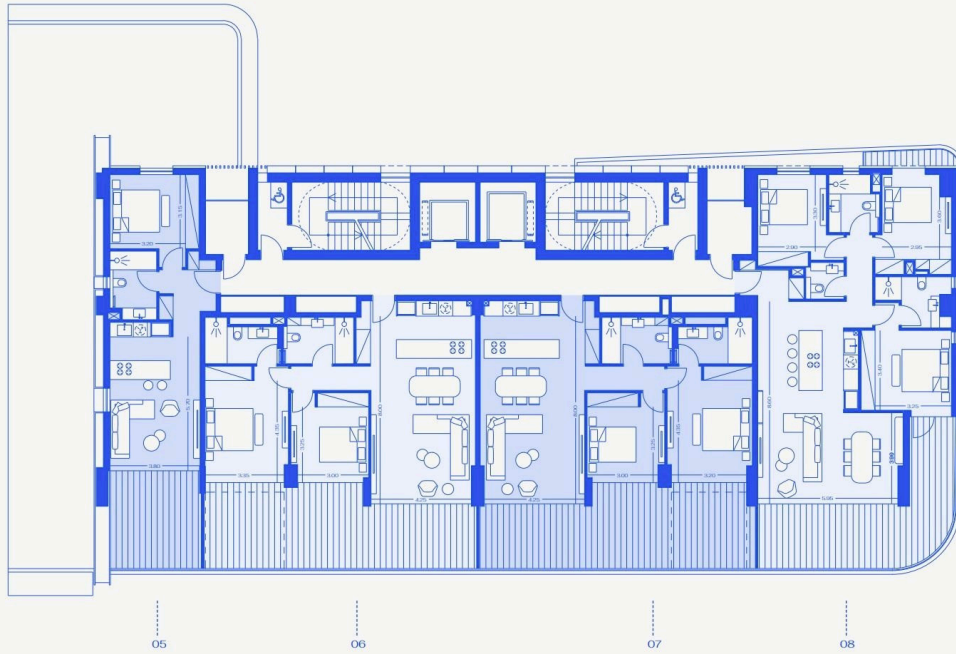
Floorplans and dimensions displayed are indicative and may vary from level to level.



LEVEL 12

Floorplans and dimensions displayed are indicative and may vary from level to level.





LEVEL 3

Floorplans and dimensions displayed are indicative and may vary from level to level.



LEVELS 4-10

Floorplans and dimensions displayed are indicative and may vary from level to level.





LEVEL 11

Floorplans and dimensions displayed are indicative and may vary from level to level.



LEVEL 12

Floorplans and dimensions displayed are indicative and may vary from level to level.

