

Reference 15693

3-Bedroom Detached House in Panthea, Limassol

€990,000

Panthea, Limassol

3 Bedrooms

3 Bathrooms

199.5 m² Covered

Description

This bright, modern 3-bedroom house is set to be fully renovated to the highest standards, allowing new owners to add their personal touches.

Key Features:

- 3 Bedrooms
- 3 W/C
- Internal area: 199.50 m²
- Covered veranda: 21 m²
- Plot size: 361 m²
- Uncovered veranda: 95 m²
- Provision for BBQ Area: 7 m²
- Covered parking: 18 m²
- Swimming pool (Skimmer Liner): 6.50 × 3.50 m
- Master bedroom with en-suite
- Guest toilet
- 2 Floors

Plot	361 m ²
Covered veranda	21 m ²
Uncovered veranda	95 m ²
Parking spaces	2
Energy efficiency rating	B+
Year of construction	2002
Status	Resale



- Underfloor electric Heating
- Fireplace
- Double glazing
- Title deed available

Property Highlights:

- Peaceful residential area of Panthea
- Close to top schools and everyday amenities
- Easy access to the highway
- Private and quiet neighborhood
- No VAT (resale property)



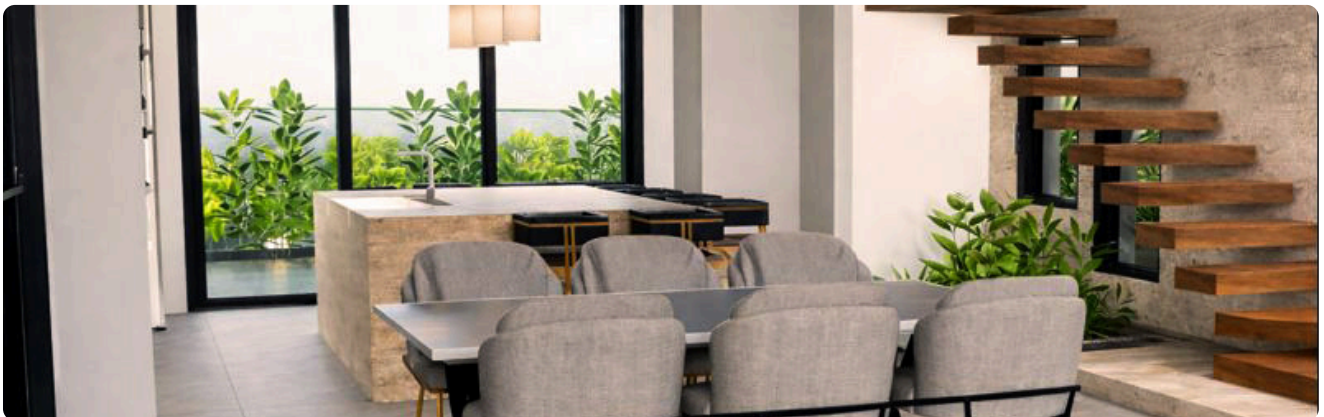
Facilities

- ✓ Aircondition · Split system
 - ✓ Heating · Underfloor
 - ✓ Parking · Covered
 - ✓ Pool · Private
 - ✓ Storage
 - ✓ Landscaped garden
 - ✓ Outdoor shower
 - ✓ Solar water heater
-

Features

- ✓ Next to green area
 - ✓ Guest WC
 - ✓ Veranda
 - ✓ Quiet area
 - ✓ Rental potential
 - ✓ En suite shower
 - ✓ Modern design
 - ✓ Near bus route
 - ✓ Near amenities
 - ✓ Alarm system (provision)
 - ✓ Double glazing
 - ✓ City view
 - ✓ Garden
 - ✓ Pressurized water system
 - ✓ Investment opportunity
 - ✓ Bright
 - ✓ Balcony
 - ✓ Fitted wardrobes
 - ✓ Entrance gate, automated
 - ✓ Combined kitchen and dining area
 - ✓ Spacious rooms
 - ✓ Easy access to main roads
 - ✓ Easy access to highway
-

Gallery





Floor plans

