



Reference 15280

Whole Residential Building with 6 Apartments in Kato Polemidia, Limassol

€1,650,000 +VAT

Kato Polemidia, Limassol

11 Bedrooms | 11 Bathrooms | 555.4 m² Covered

Description

- Covered Areas 555.4m²
- Covered Verandas 119.4m²
- 6 Apartments
- 3 Floors
- 1st and 2nd floors: Two 2-Bedroom Apartments Each
- 3rd Floor: One 2-Bedroom and One 1-Bedroom Apartment
- 8 Parking Spaces
- Storage Rooms
- Energy Efficiency "A"

Covered veranda	119.4 m ²
Parking spaces	8
Energy efficiency rating	A
Year of construction	2026
Status	Under construction



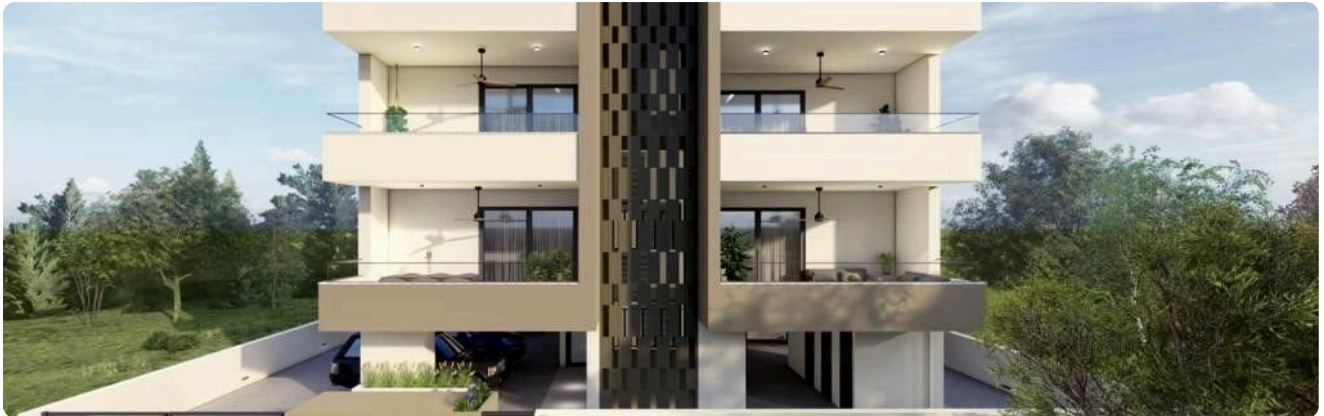
Facilities

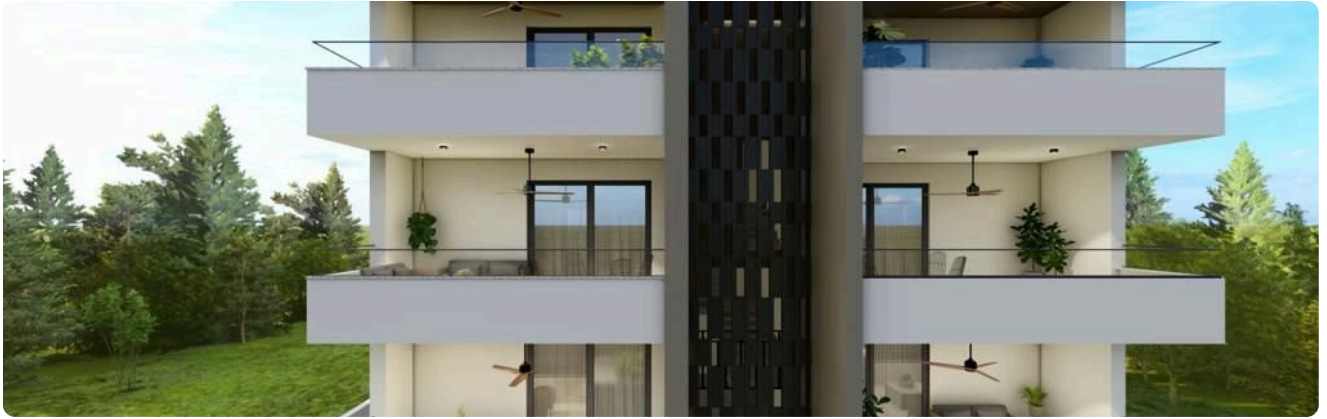
✓ Aircondition · Provision ✓ Parking · Covered ✓ Elevator ✓ Storage ✓ Solar water heater

Features

✓ Cul de sac ✓ Veranda ✓ Quiet area ✓ Ceramic tiles ✓ Modern design ✓ Near amenities
✓ Double glazing ✓ Open plan ✓ Pressurized water system ✓ Electric car charger (provision)
✓ Pipe-in-pipe plumbing system ✓ Easy access to main roads ✓ Easy access to highway
✓ Thermal insulation

Gallery









Floor plans

