



Reference 15156

2 Bed Penthouse Apartment in Limassol, close to Marina

**€550,000** +VAT

Limassol Old City, Limassol

2 Bedrooms

1 Bathroom

87.35 m<sup>2</sup> Covered

## Description

- 2 bedrooms
- 1 W/C
- Internal Area 87.35m<sup>2</sup>
- Covered Verandas 20.3m<sup>2</sup>
- Covered Parking
- Communal Indoor Heated Pool
- Gym & Sauna
- Storage
- Energy Efficiency "A"
- 2-min walk to the beach

Covered veranda	20.3 m <sup>2</sup>
Parking spaces	1
Energy efficiency rating	A
Year of construction	2025
Status	Under construction



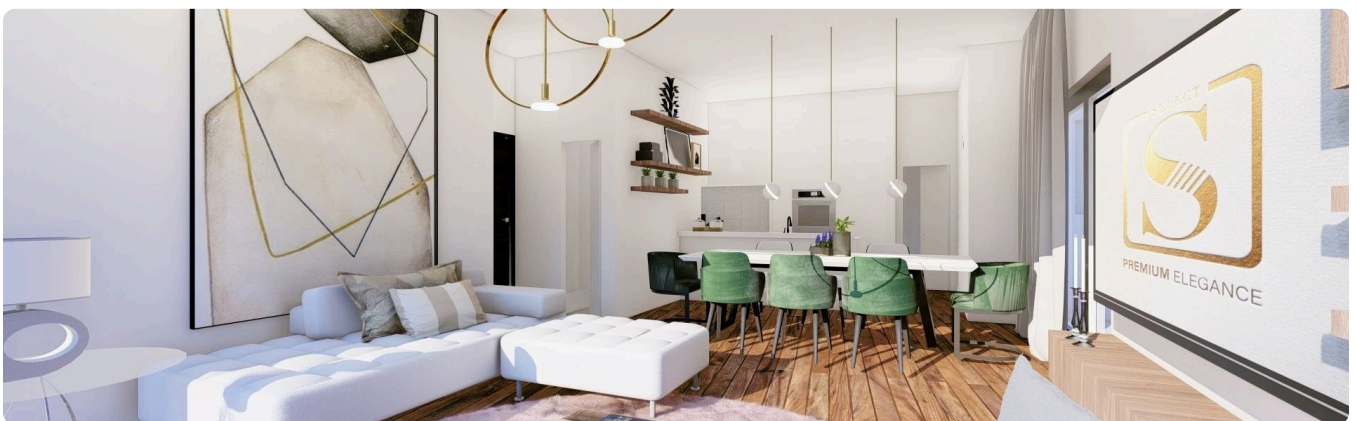
## Facilities

- ✓ Aircondition · Provision   ✓ Heating · Provision   ✓ Parking · Covered  
✓ Indoor pool · Communal, heated   ✓ Elevator   ✓ Gym   ✓ Sauna   ✓ Storage
- 

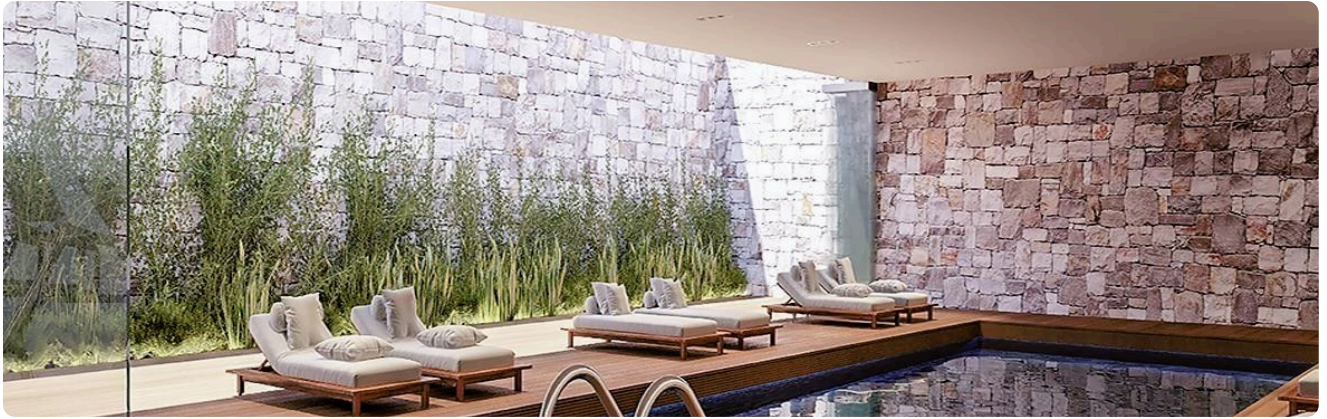
## Features

- ✓ Guest WC   ✓ Quiet area   ✓ Marble flooring   ✓ Semi-solid parquet flooring  
✓ En suite bathroom   ✓ Luxury specifications   ✓ Modern design   ✓ Walking distance to beach  
✓ Near amenities   ✓ Double glazing   ✓ Open plan   ✓ City view   ✓ Bright   ✓ Entrance gate  
✓ High ceilings   ✓ Heart of city center   ✓ Thermal insulation
- 

## Gallery





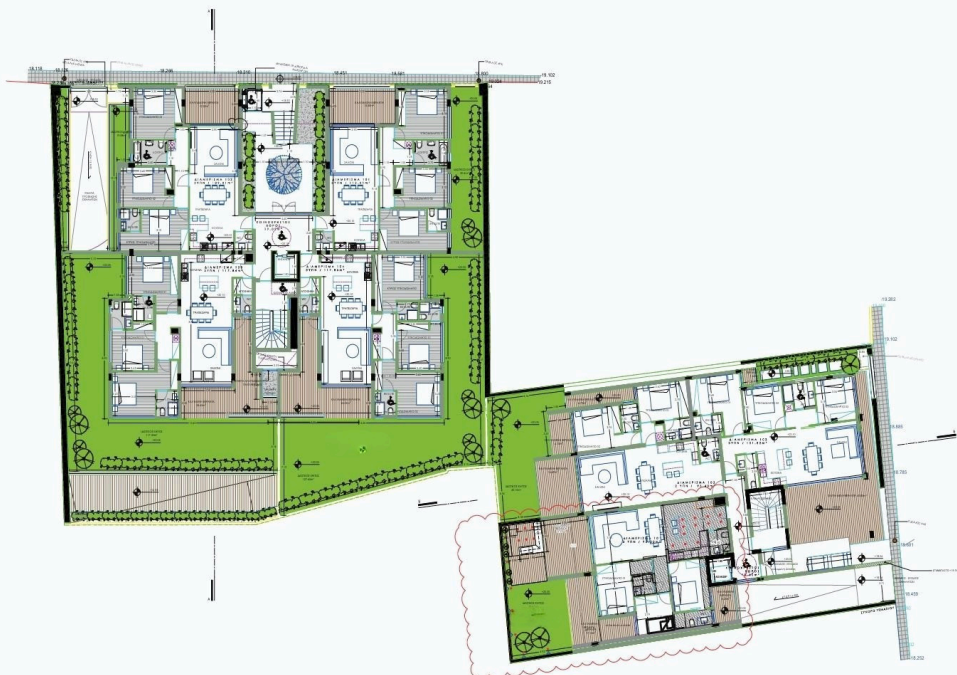


Floor plans

BASEMENT



GROUND FLOOR



## 1st FLOOR



## 2nd FLOOR





# ROOF

