



Reference 1500

## 2 Bed penthouse in Dali/Latsia

**€172,000**

Kalitheia / Carlsberg, Nicosia

2 Bedrooms

2 Bathrooms

112 m<sup>2</sup> Covered

### Description

SOLD

- ✓ 2 Bed
- ✓ 2 Bath
- ✓ 78.68 sqm Internal Areas
- ✓ 27.35 sqm Covered Verandas
- ✓ Penthouse
- ✓ Adjacent to green Area
- ✓ Quiet Location
- ✓ Provision for Photovoltaic Panels
- ✓ Short distance from All amenities and Nicosia Center

This project is composed by apartments of two bedrooms. It is located in Dali – Latsia in Carlsberg Area.

The building has 3 floors, and a total of 7 apartments. There are 3 apartments on the 1st and 2nd floor and 1 apartment on 3rd floor.

Covered veranda	27.35 m <sup>2</sup>
Parking spaces	1
Energy efficiency rating	A
Status	Under construction



On the ground floor we have the parking places, the storage area and the garden. Big corridors which lead to the elevator and the stairway. Spacious interiors and verandas on each apartment.



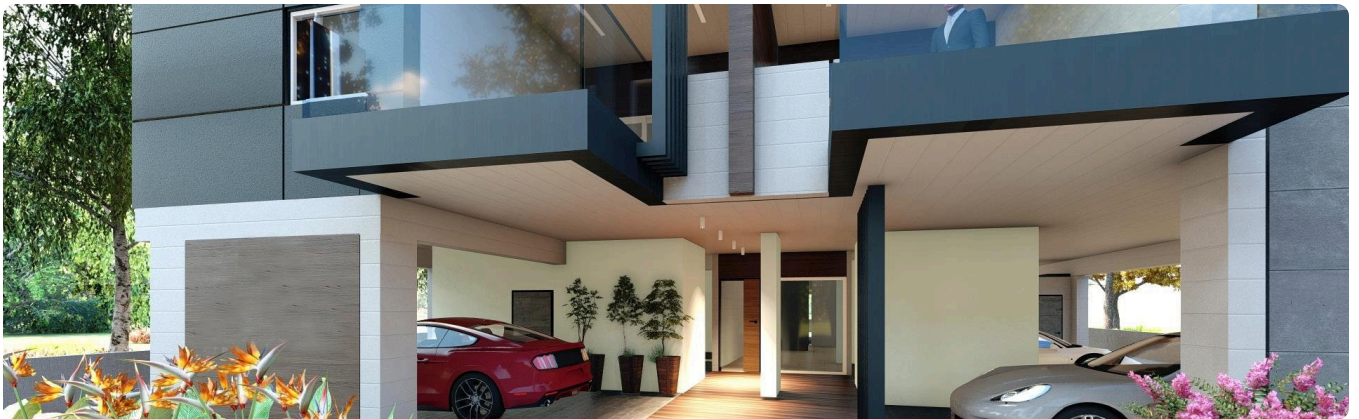
## Facilities

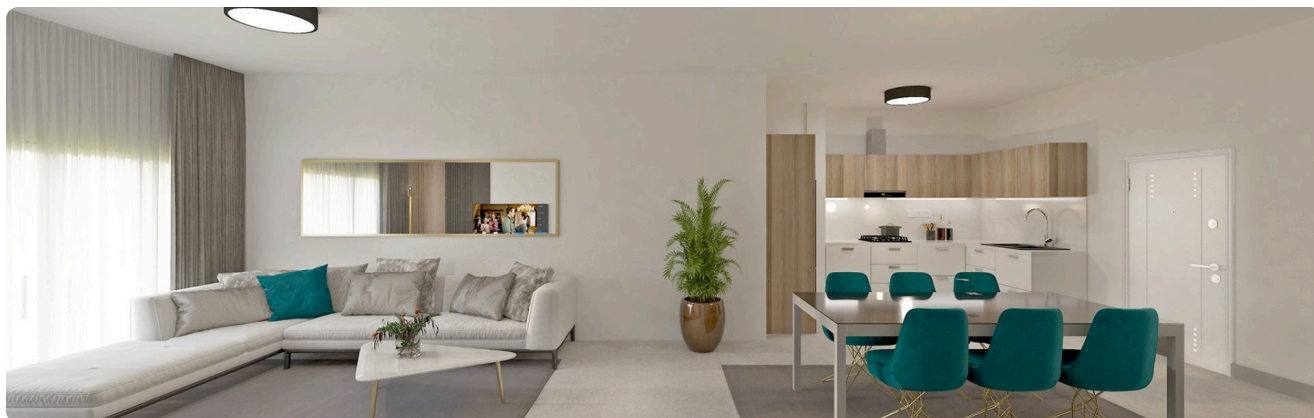
- ✓ Aircondition · Provision
  - ✓ Heating · Provision
  - ✓ Parking · Covered
  - ✓ Storage
  - ✓ Solar water heater
- 

## Features

- ✓ Next to green area
  - ✓ Sound insulation
  - ✓ Thermal insulation
- 

## Gallery





Apartment	BED	Interior m <sup>2</sup>	Verandas m <sup>2</sup>	W/C	Storage m <sup>2</sup>	Parking m <sup>2</sup>	Total m <sup>2</sup>
1 <sup>ST</sup> FLOORS							
101	2	82.90	29.30	2	4.16	12	128.36
102	2	80.80	16.40	2	3.74	12	112.94
103	2	80.80	15.80	2	3.82	12	112.42
2 <sup>ND</sup> FLOOR							
201	2	82.90	29.30	2	6.34	12	130.54
202	2	80.80	16.40	2	6.34	12	115.54
203	2	80.80	15.80	2	2.80	12	111.4
3 <sup>RD</sup> FLOOR							
301	2	82.90	29.30	2	2.80	12	127





## Floor plans

