



Reference 14943

3 Bed Semi-Detached House in Geri

€315,000 +VAT

Geri, Nicosia

3 Bedrooms | 3 Bathrooms | 155 m² Covered

Description

- 3 bedrooms
- 3 W/C
- Internal Area 155m²
- Plot Area 260m²
- Covered Parking
- Garden
- CCTV
- Alarm System
- Energy Efficiency "A"

Plot	260 m ²
Parking spaces	1
Energy efficiency rating	A
Year of construction	2026
Status	Under construction



Facilities

✓ Aircondition · Provision ✓ Parking · Covered ✓ Solar water heater

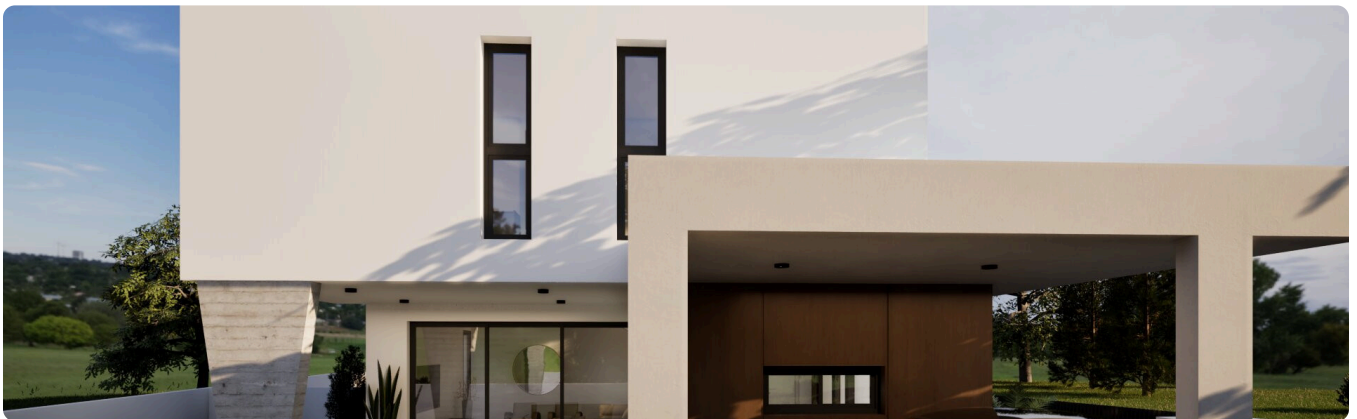
Features

✓ Guest WC ✓ Veranda ✓ Ceramic tiles ✓ CCTV ✓ En suite bathroom ✓ Modern design
✓ Near amenities ✓ Alarm system ✓ Double glazing ✓ Open plan ✓ Garden
✓ Pressurized water system ✓ Internal stairs ✓ Pipe-in-pipe plumbing system
✓ Easy access to highway ✓ Sound insulation ✓ Thermal insulation

Gallery













This architectural floor plan illustrates the layout of a restaurant building, oriented with a North arrow pointing towards the top right. The plan is divided into several functional areas, each with specific dimensions and furniture placement.

Overall Dimensions and Orientation:

- The building's overall width is 1349 units, and its depth is 605 units.
- A North arrow is located in the top right corner, pointing towards the top right.

Room Layouts and Dimensions:

- Entrance Area:** The entrance is marked with a double line and a door. The area is 74 M wide and 770 units deep. It includes a reception desk and a seating area.
- Kitchen:** The kitchen is located on the left side of the plan, measuring 352 units in width and 400 units in depth. It includes a sink, stove, and storage areas.
- Dining Area:** The main dining area is located in the center and right of the plan. It includes several tables and chairs. The area is 1338 units wide and 607 units deep. It includes a bar area and a seating area.
- Bar Area:** The bar area is located in the center of the plan, measuring 740 units in width and 1035 units in depth. It includes a bar counter and seating.
- Restrooms:** There are two restrooms located in the center of the plan, each measuring 151 units in width and 200 units in depth.
- Storage Area:** A storage area is located in the bottom right corner, measuring 120 units in width and 120 units in depth.

Furniture and Fixtures:

- The plan includes various pieces of furniture and fixtures, including tables, chairs, a bar counter, a reception desk, and a sink.
- There are also several plants and trees indicated by green symbols.

Scale and Orientation:

- The scale of the plan is 1:20, as indicated by the text "1:20" in the bottom right corner.
- The orientation is indicated by the North arrow in the top right corner.

