



Reference 14884

Whole Floor Office in Limassol City Center

€1,700,000 +VAT

Limassol Center, Limassol

2 Bathrooms | 175 m² Covered

Description

- Internal Area 175m²
- Covered Verandas 19m²
- 2 W/C
- Open Plan
- Lobby
- Kitchen
- 4 Parking Spaces
- Communal Roof Garden
- Storage
- Close to several amenities

Covered veranda	19 m ²
Parking spaces	4
Energy efficiency rating	A
Year of construction	2027
Status	Under construction



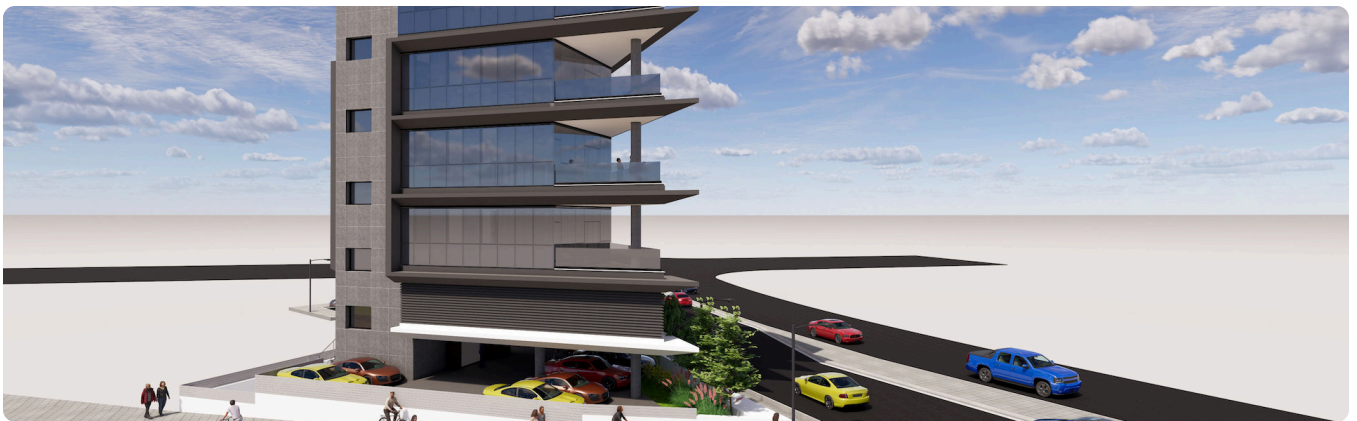
Facilities

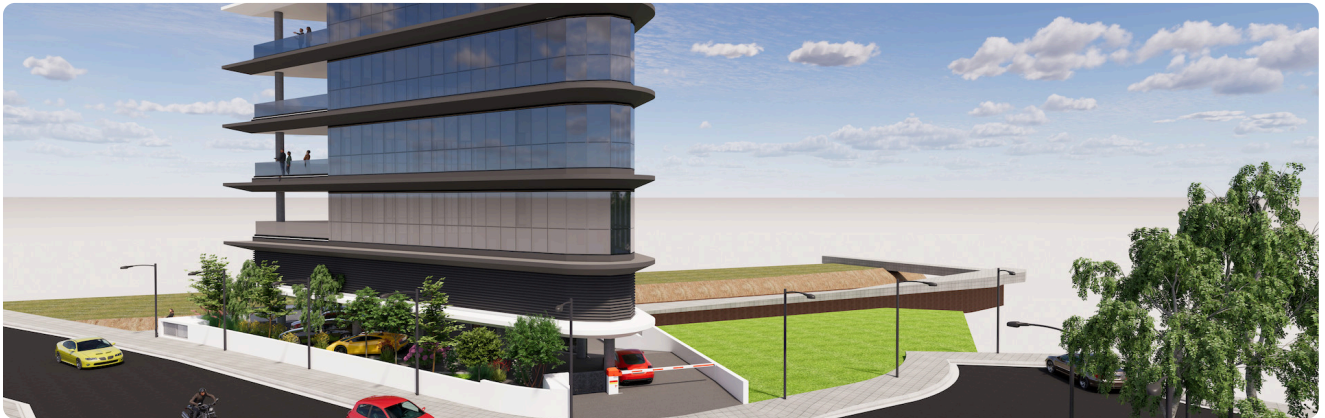
✓ Parking · Covered ✓ Elevator

Features

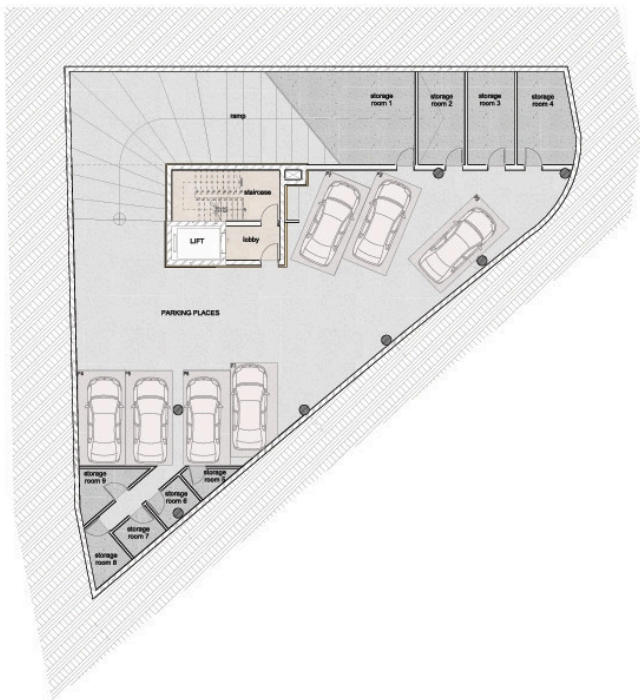
✓ Kitchenette ✓ Heart of city center ✓ Easy access to main roads ✓ Roof garden
✓ Near amenities ✓ Lobby ✓ Veranda

Gallery

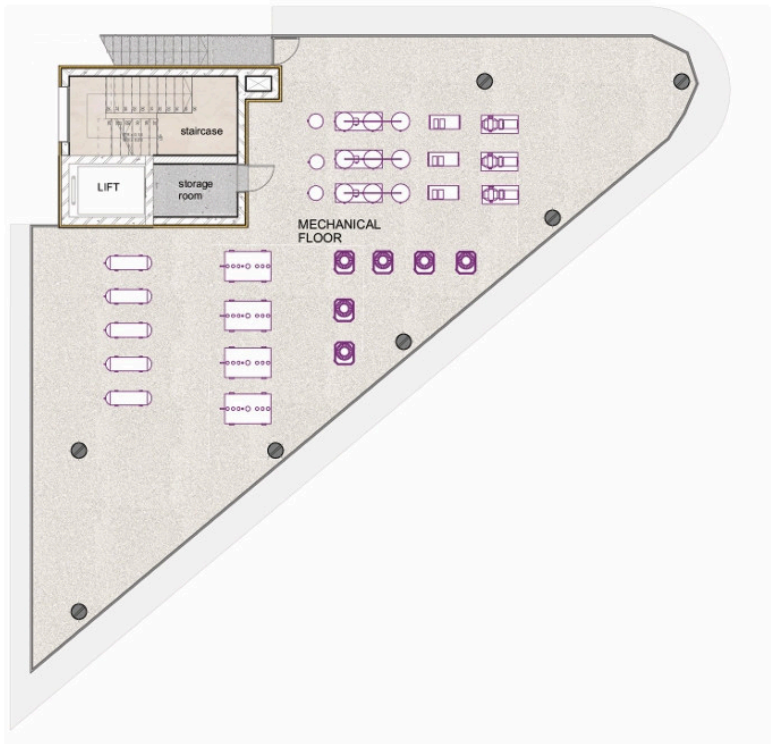




BASEMENT



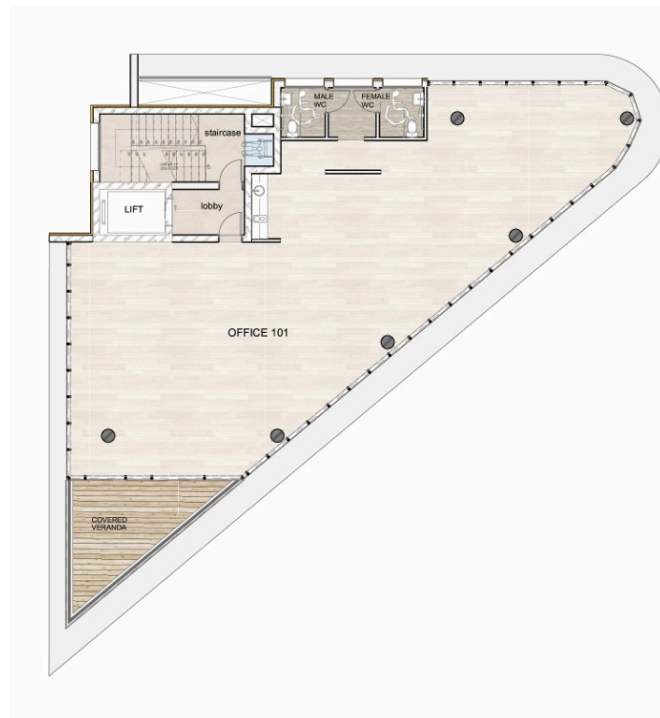
MECHANICAL



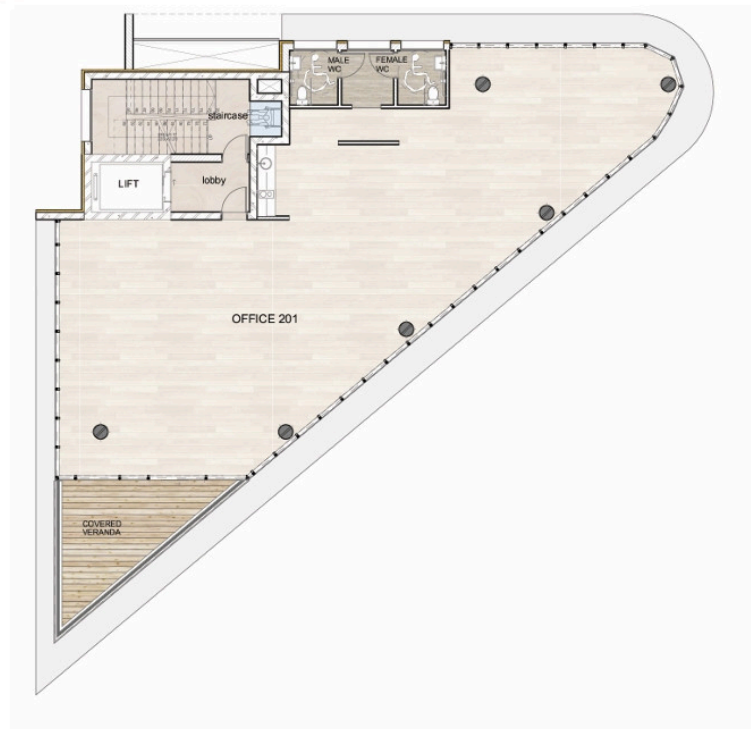
GROUND FLOOR



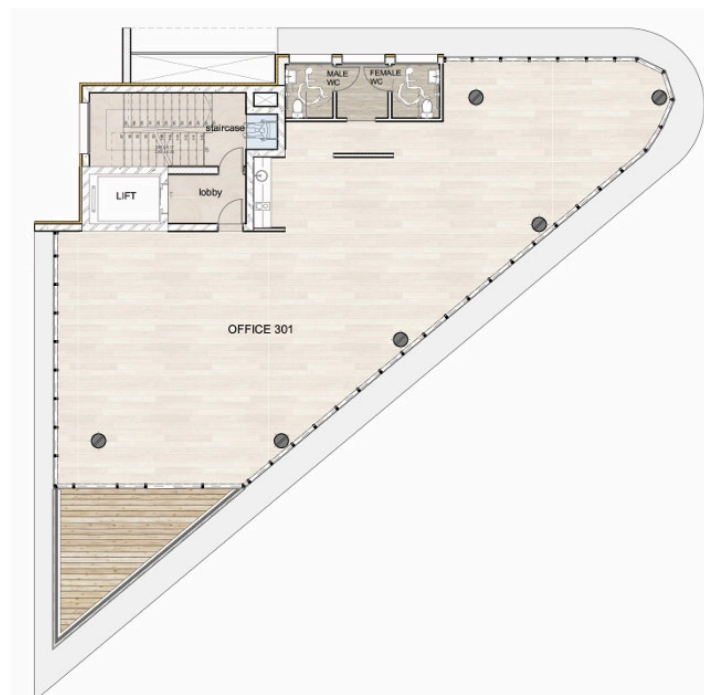
1ST FLOOR



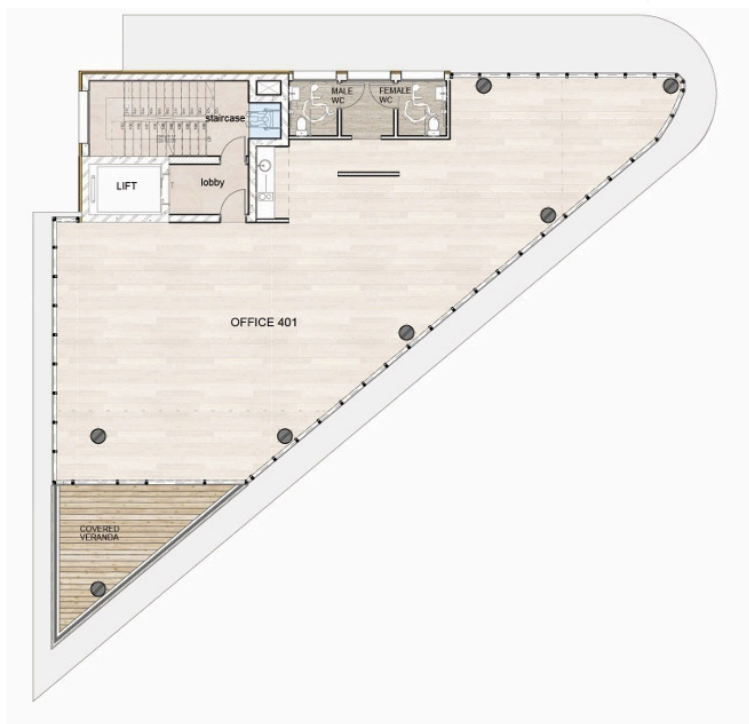
2ND FLOOR



3RD FLOOR



4th FLOOR



ROOF GARDEN

