



Reference 14842

1 Bed Apartment in Katholiki, Limassol

€320,000 +VAT

Katholiki, Limassol

1 Bedroom | 1 Bathroom | 48 m² Covered

Description

- 1 bedroom
- 1 W/C
- Internal Area 48m²
- Covered Verandas 16m²
- Covered Parking
- Photovoltaic Panels
- Energy Efficiency "A"

Covered veranda	16 m ²
Parking spaces	1
Energy efficiency rating	A
Year of construction	2026
Status	Under construction



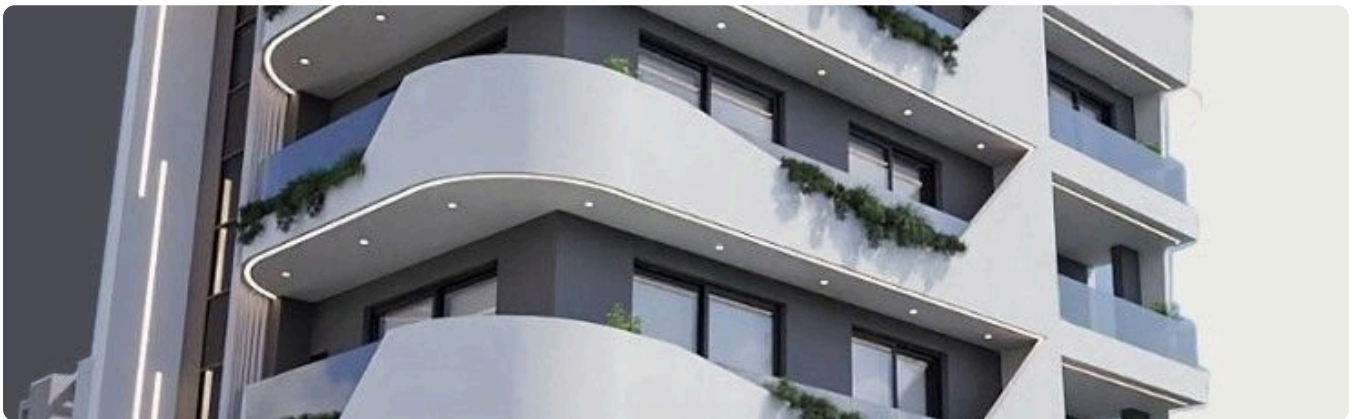
Facilities

- ✓ Aircondition · Provision
 - ✓ Heating · Provision
 - ✓ Parking · Covered
 - ✓ Elevator
 - ✓ Solar photovoltaic panels
-

Features

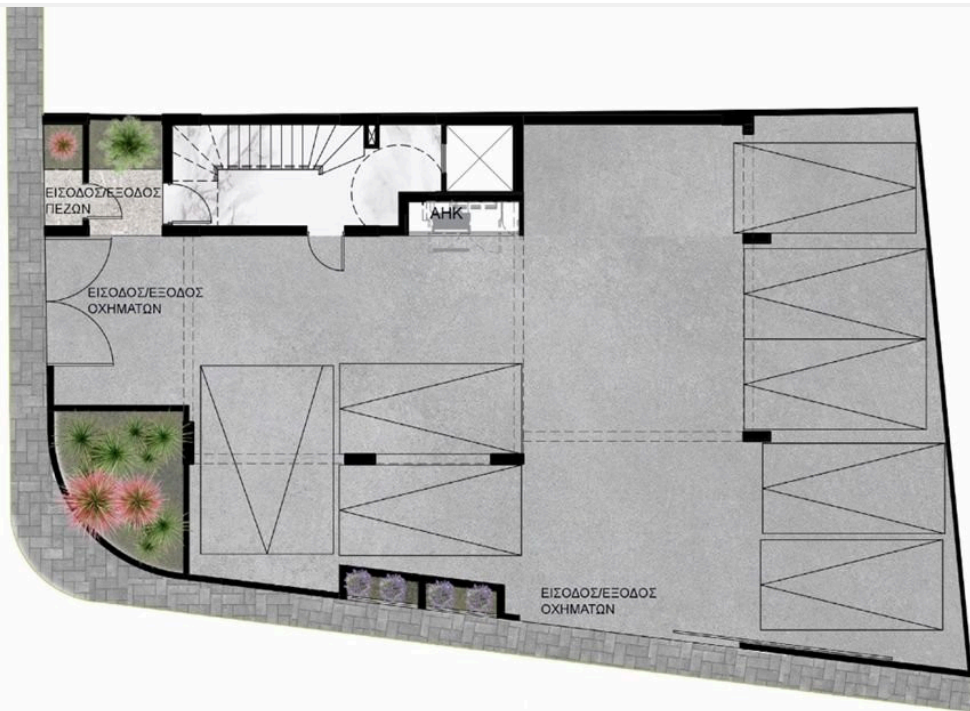
- ✓ Veranda
 - ✓ Modern design
 - ✓ Near amenities
 - ✓ Open plan
 - ✓ Electric car charger (provision)
 - ✓ Heart of city center
 - ✓ Easy access to main roads
-

Gallery





Floor plans



GROUND FLOOR

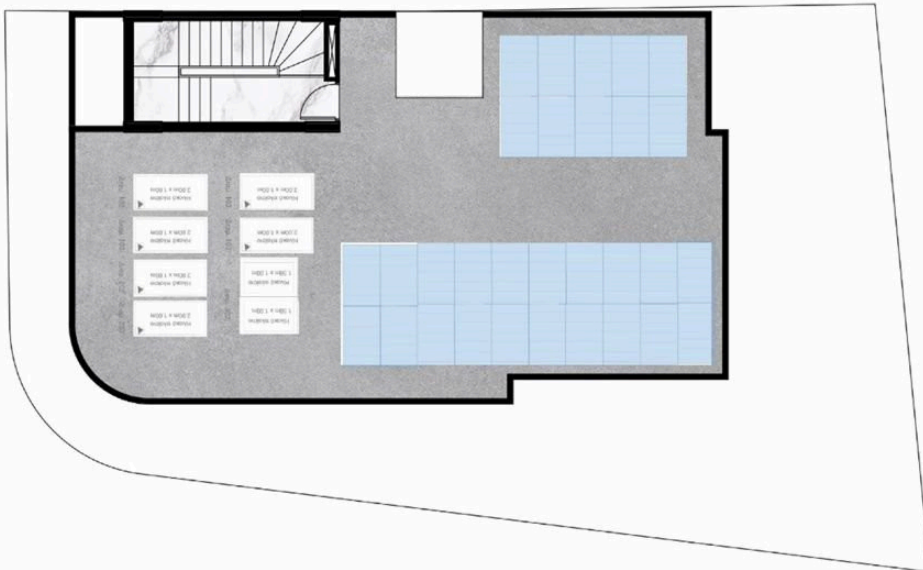


1st-2nd-3rd FLOORS





4th FLOOR



ROOF

