



Reference 14755

## 2 Bed Penthouse Apartment in Erimi, Limassol

**€225,000** +VAT

Erimi, Limassol

2 Bedrooms | 2 Bathrooms | 77.74 m<sup>2</sup> Covered

### Description

- 2 bedrooms
- 2 W/C
- Internal Area 77.74m<sup>2</sup>
- Covered Verandas 9.42m<sup>2</sup>
- Covered Parking
- Storage
- Energy Efficiency "A"

Covered veranda	9.42 m <sup>2</sup>
Parking spaces	1
Energy efficiency rating	A
Year of construction	2027
Status	Under construction



## Facilities

- ✓ Aircondition · Provision
  - ✓ Parking · Covered
  - ✓ Elevator
  - ✓ Storage
  - ✓ Solar photovoltaic panels (provision)
- 

## Features

- ✓ Veranda
  - ✓ Quiet area
  - ✓ Modern design
  - ✓ Near amenities
  - ✓ Double glazing
  - ✓ Open plan
  - ✓ Thermal insulation
- 

## Gallery



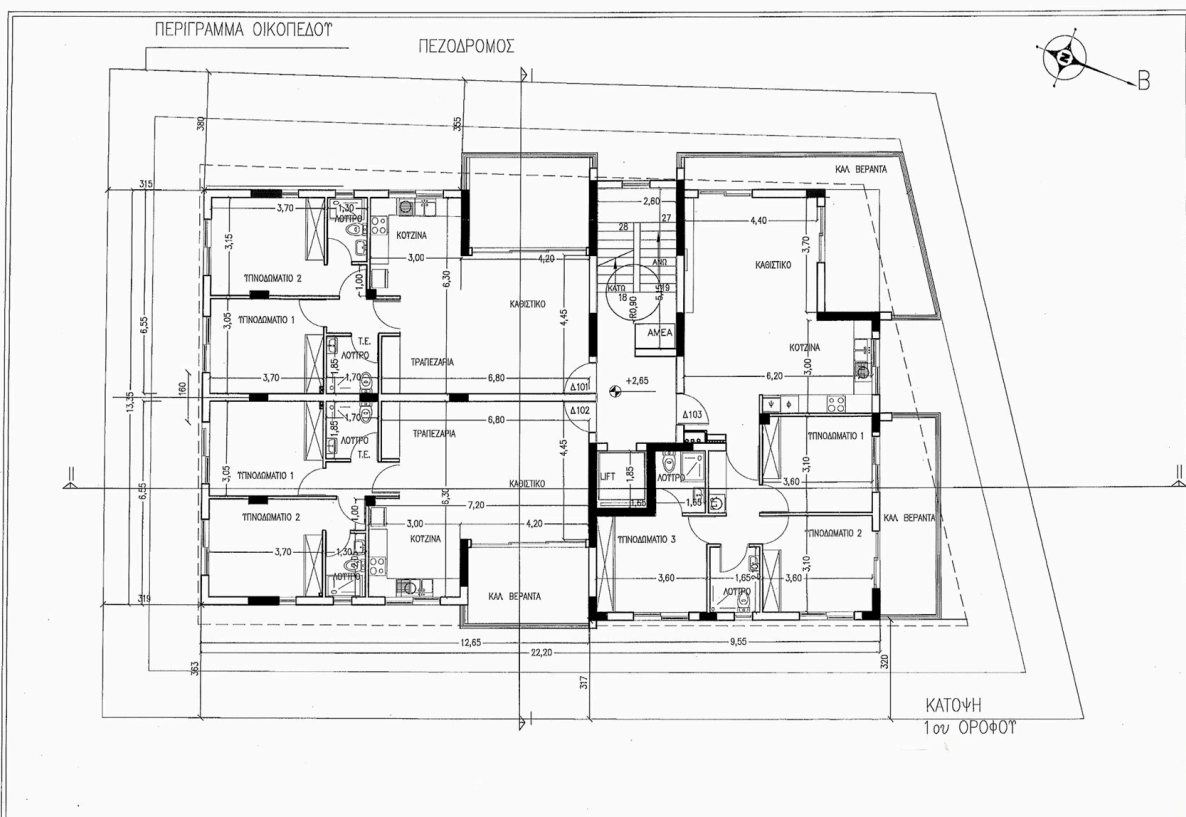
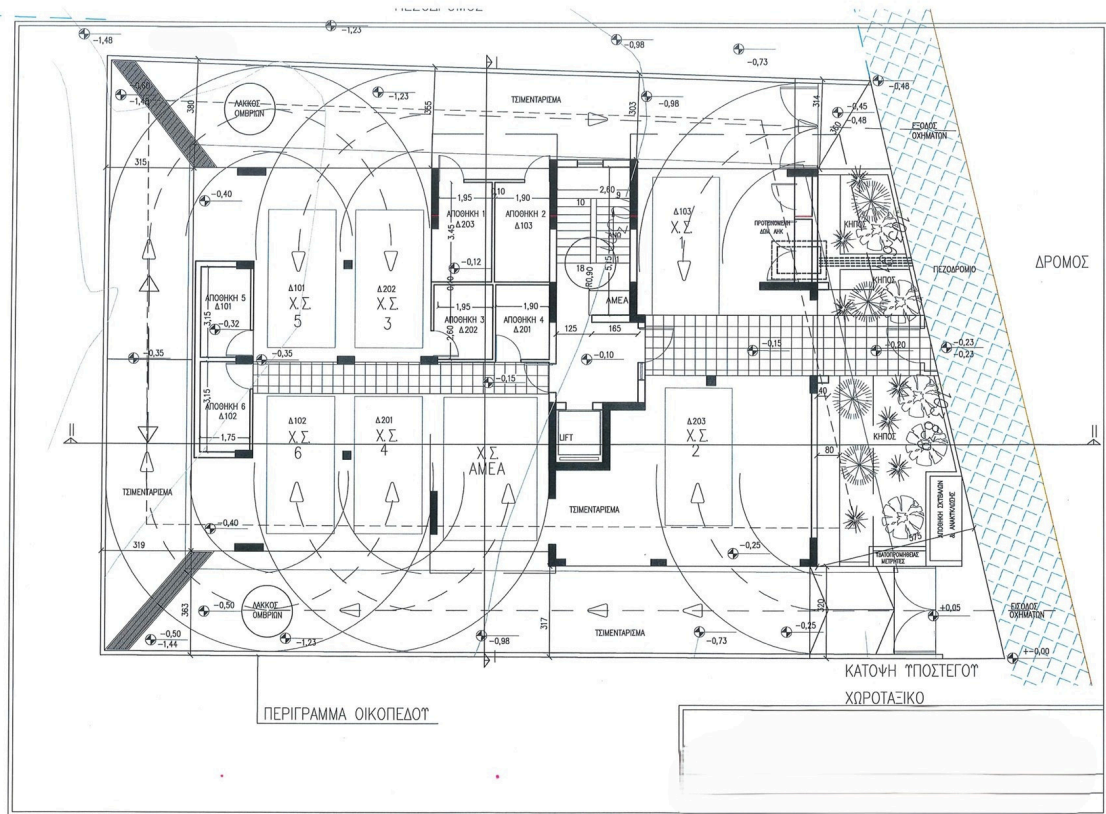




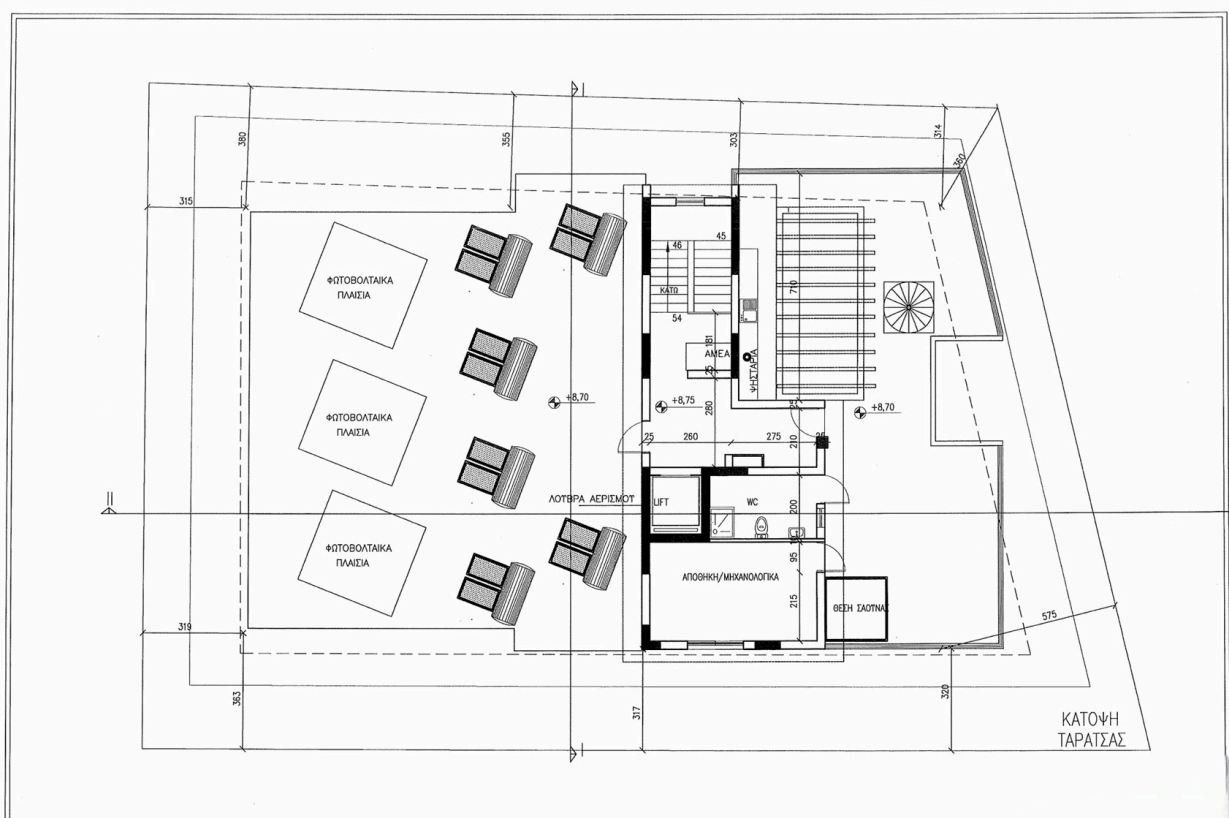
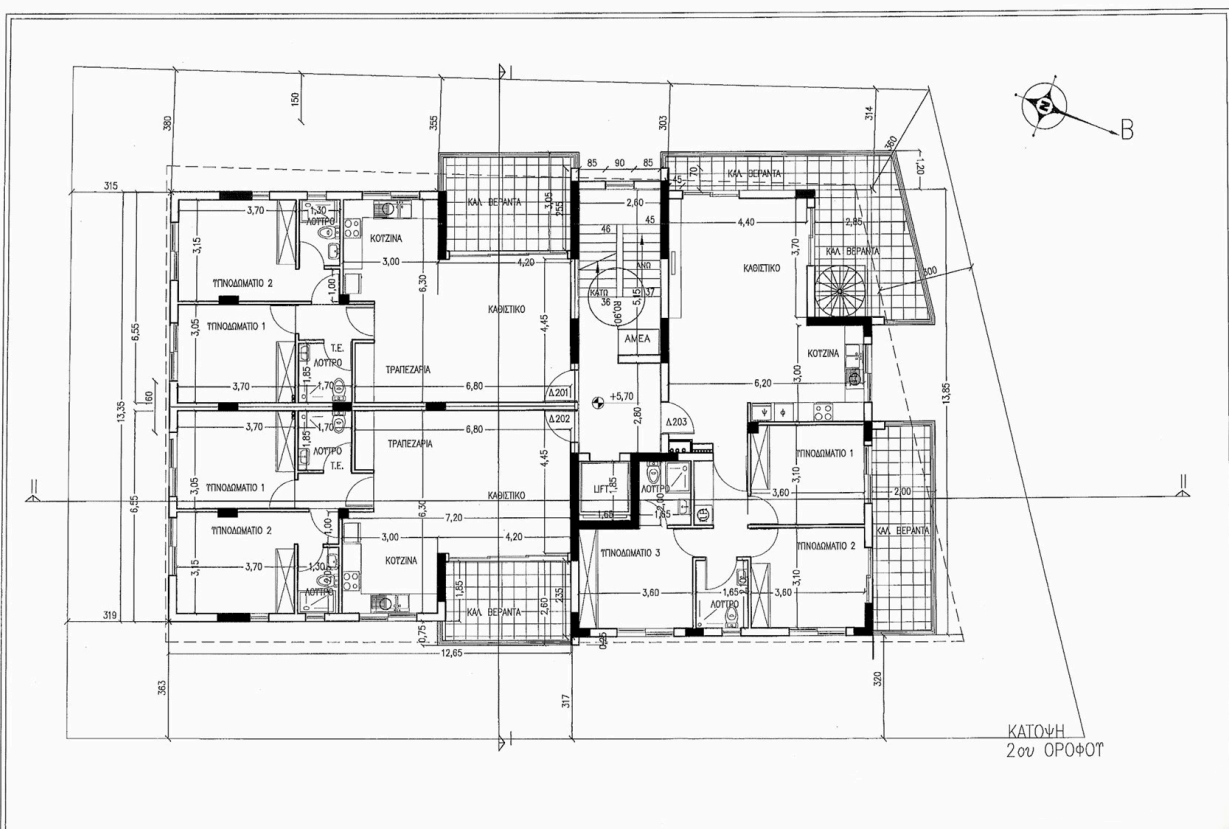


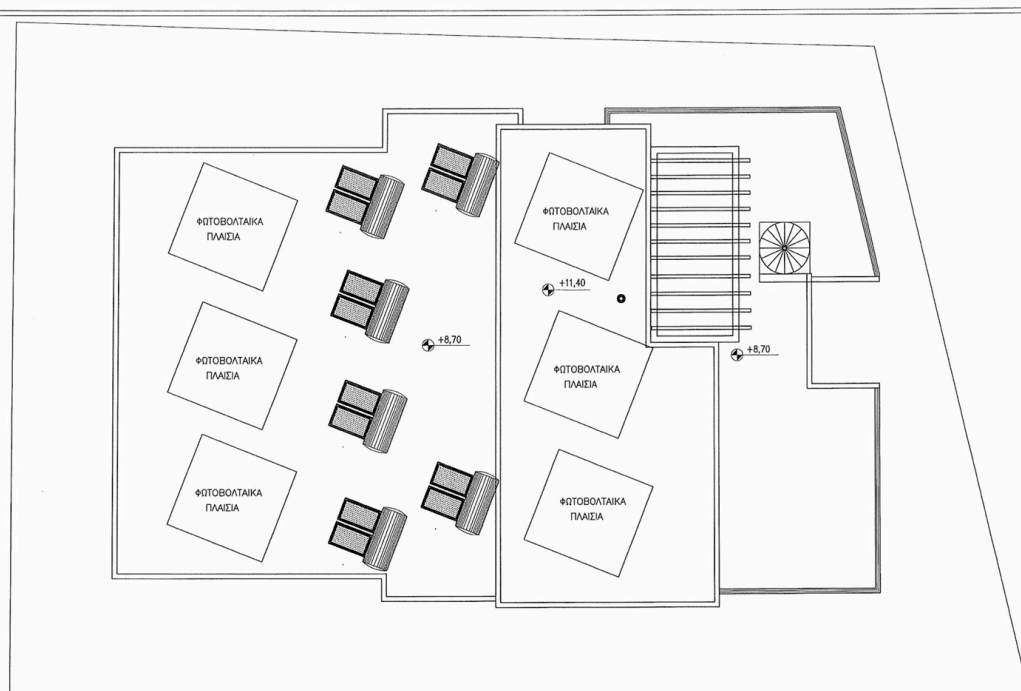


## Floor plans









ΚΑΤΟΨΗ  
ΟΡΟΦΗΣ

