



Reference 14752

2 Bed Apartment in Erimi, Limassol

€225,000 +VAT

Erimi, Limassol

2 Bedrooms | 2 Bathrooms | 77.74 m² Covered

Description

- 2 bedrooms
- 2 W/C
- Internal Area 77.74m²
- Covered Verandas 12.57m²
- Covered Parking
- Storage
- Energy Efficiency "A"

Covered veranda	12.57 m ²
Parking spaces	1
Energy efficiency rating	A
Year of construction	2027
Status	Under construction



Facilities

- ✓ Aircondition · Provision
 - ✓ Parking · Covered
 - ✓ Elevator
 - ✓ Storage
 - ✓ Solar photovoltaic panels (provision)
-

Features

- ✓ Veranda
 - ✓ Quiet area
 - ✓ Modern design
 - ✓ Near amenities
 - ✓ Double glazing
 - ✓ Open plan
 - ✓ Thermal insulation
-

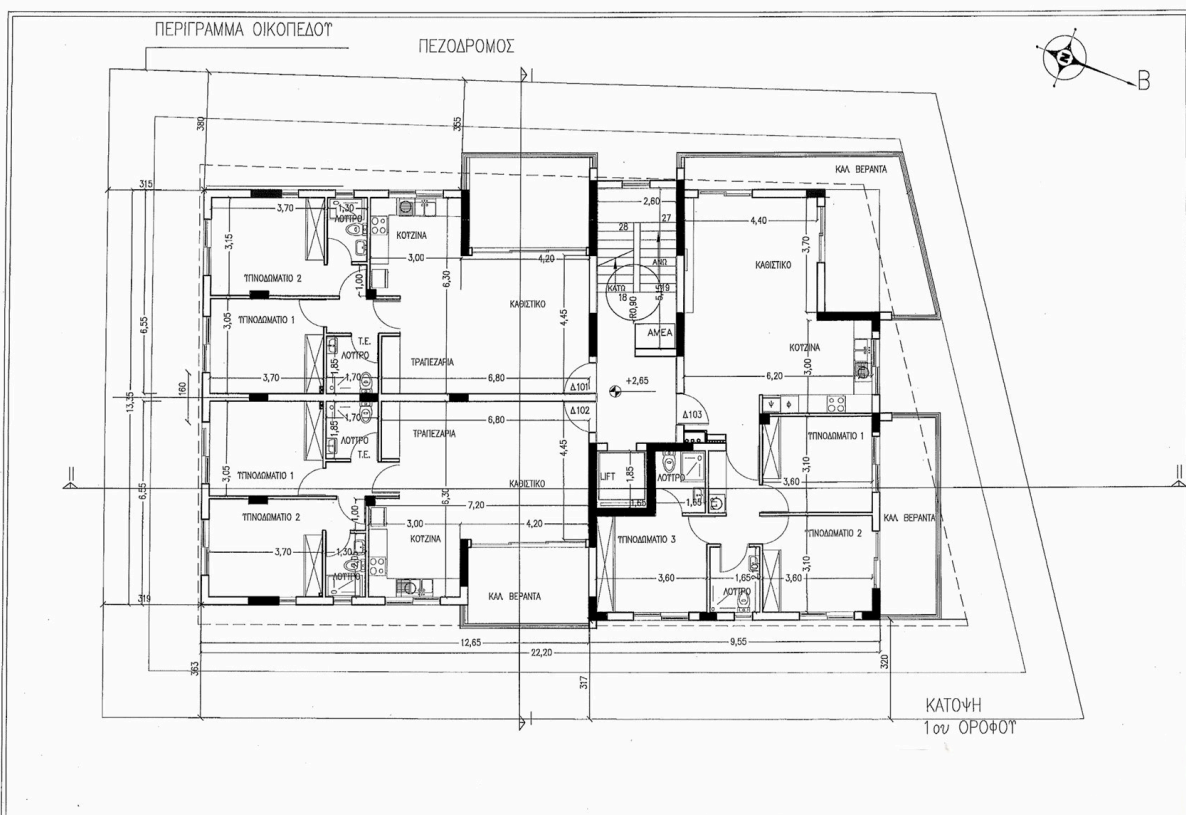
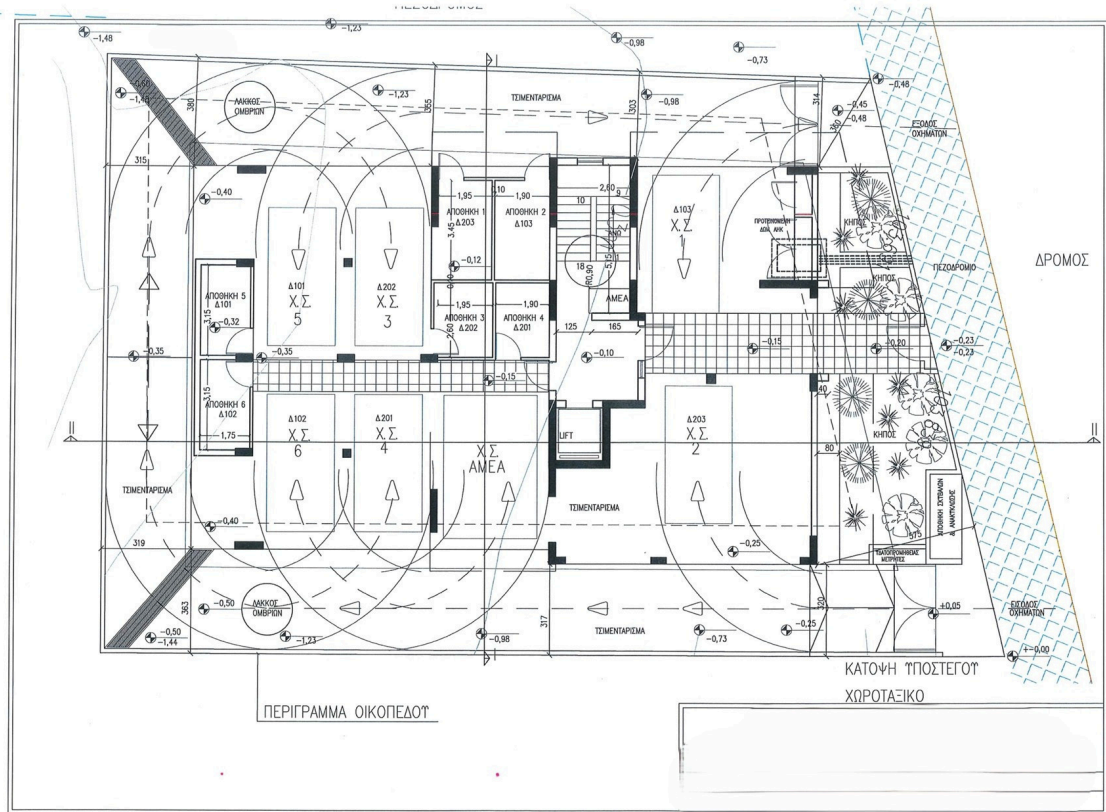
Gallery

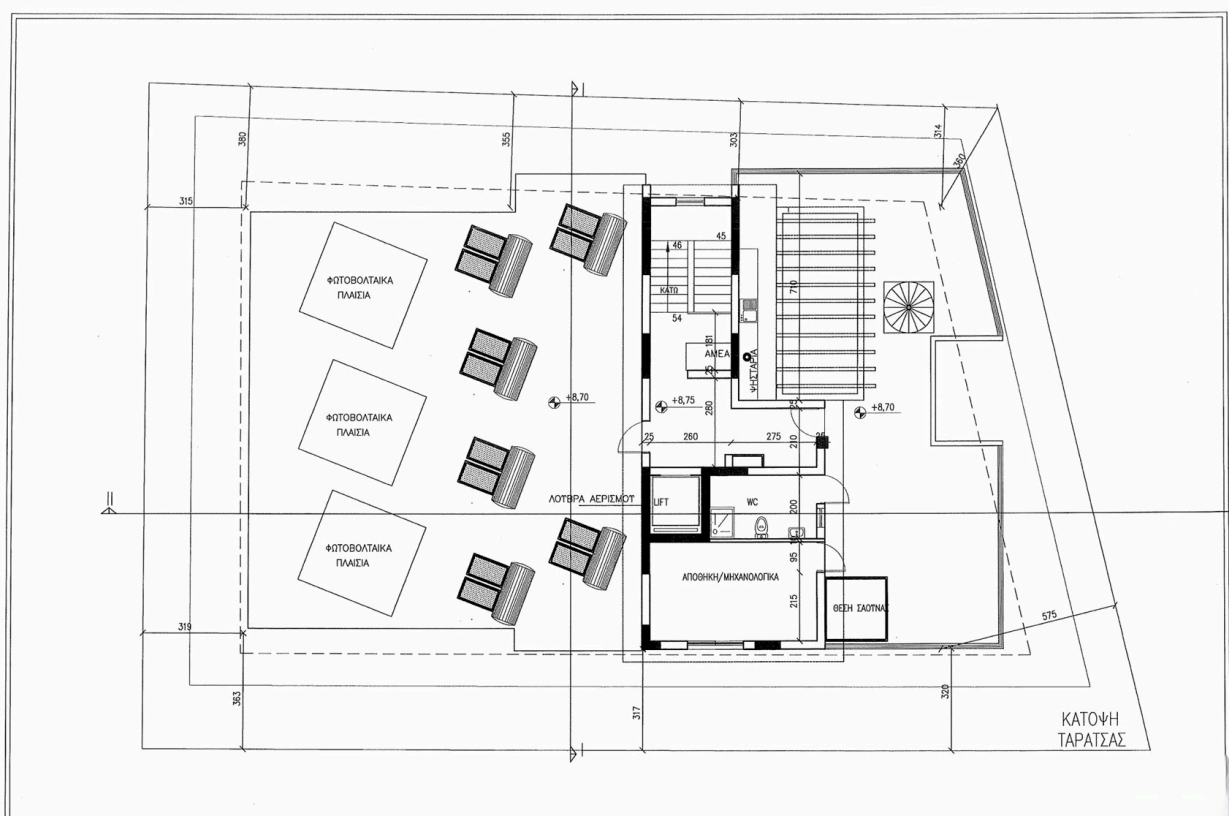
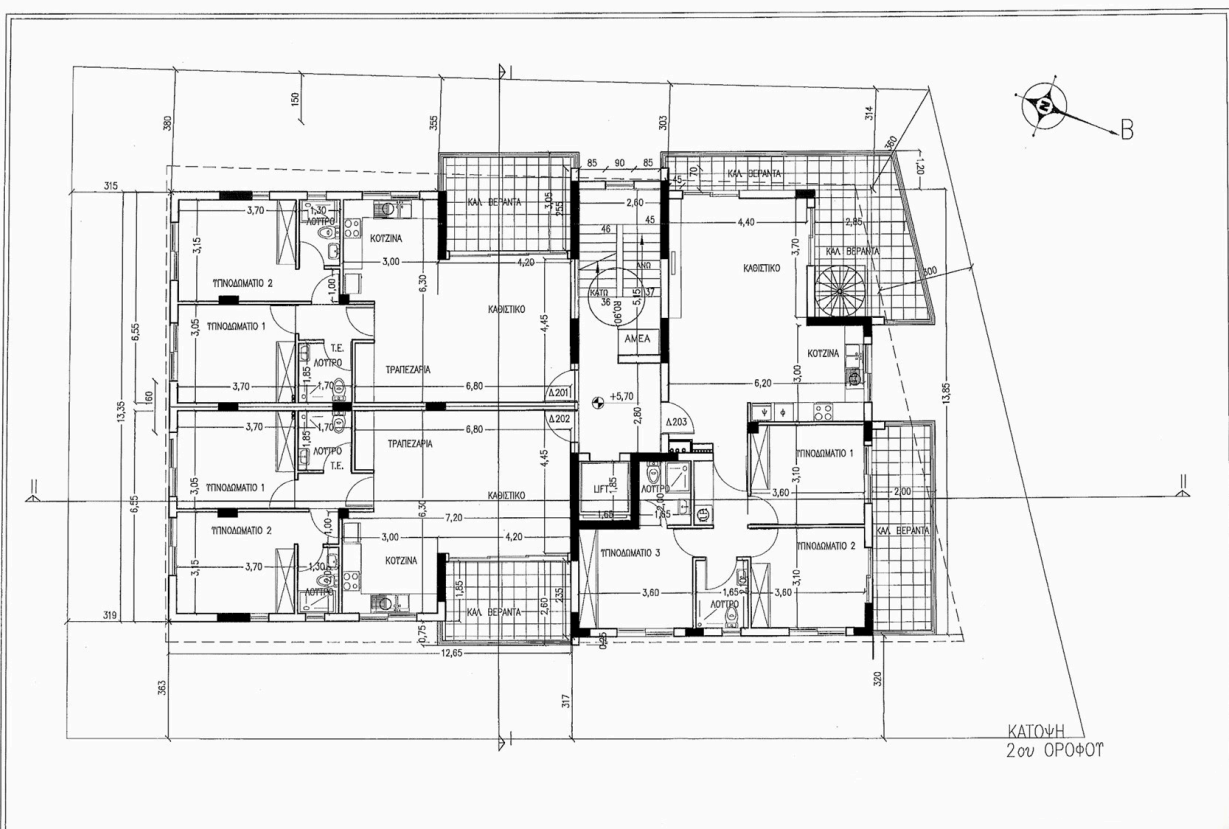


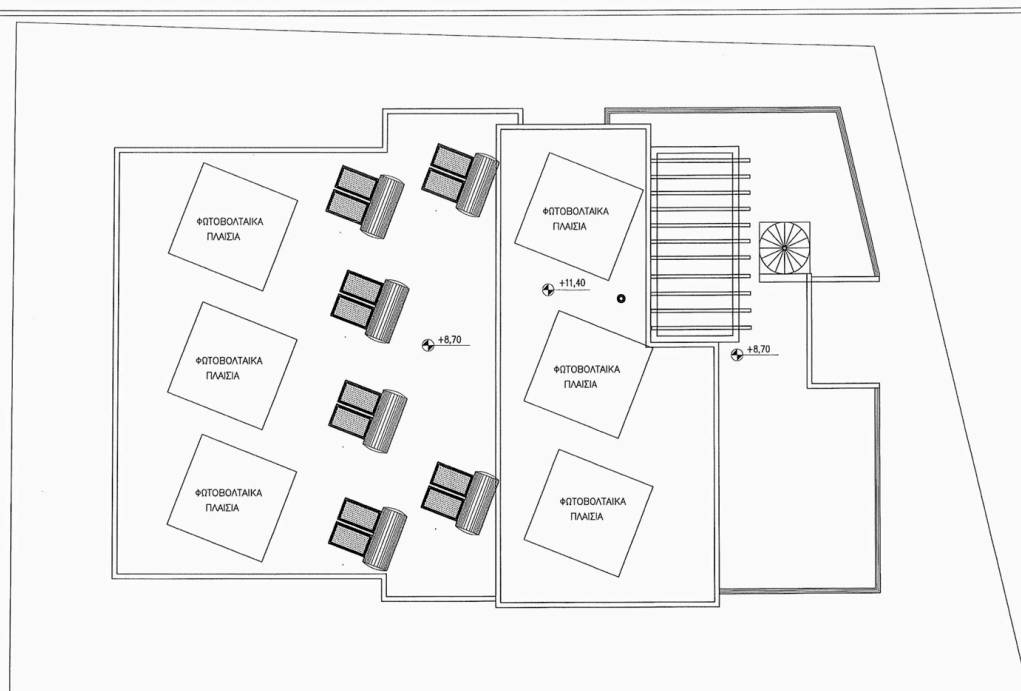




Floor plans







ΚΑΤΟΨΗ
ΟΡΟΦΗΣ

