



Reference 14258

3 Bed Detached House in Palodia, Limassol

€489,000 +VAT

Palodia Village, Limassol

3 Bedrooms | 3 Bathrooms | 150 m² Covered

Description

- 3 bedrooms
- 3 W/C
- Internal Area 150m²
- Covered Verandas 29m²
- Plot Area 376m²
- Covered Parking
- Energy Efficiency "A"

| | |
|--------------------------|--------------------|
| Plot | 376 m ² |
| Covered veranda | 29 m ² |
| Parking spaces | 2 |
| Energy efficiency rating | A |
| Year of construction | 2026 |
| Status | Under construction |



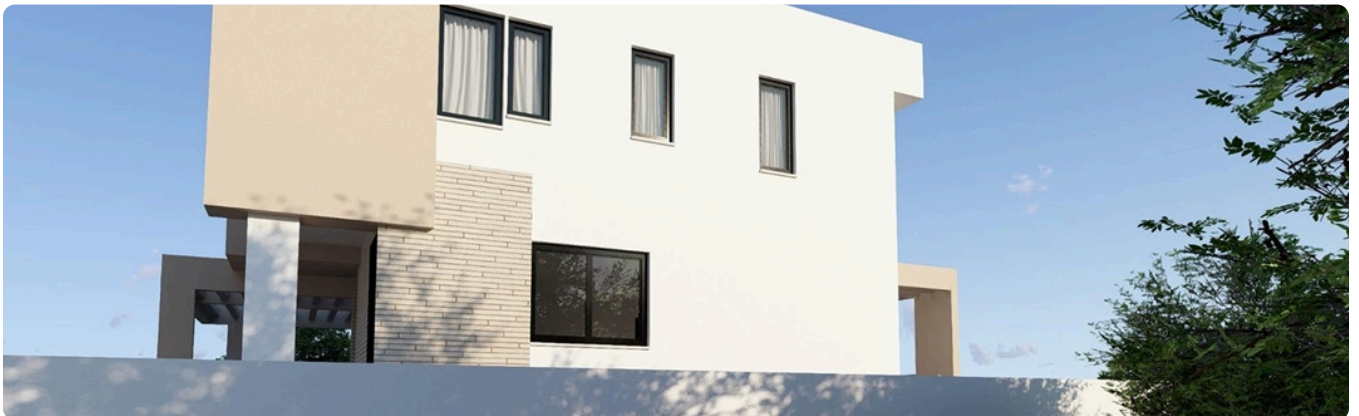
Facilities

- ✓ Aircondition · Provision
 - ✓ Heating · Provision
 - ✓ Parking · Covered
 - ✓ Solar water heater
 - ✓ Solar photovoltaic panels
-

Features

- ✓ Guest WC
 - ✓ Veranda
 - ✓ Quiet area
 - ✓ Ceramic tiles
 - ✓ Modern design
 - ✓ Double glazing
 - ✓ Open plan
 - ✓ Pressurized water system
 - ✓ Internal stairs
 - ✓ Pipe-in-pipe plumbing system
 - ✓ Thermal insulation
-

Gallery





Floor plans

