



Reference 14227

1 Bed Penthouse Apartment in Erimi, Limassol

€170,000 +VAT

Erimi, Limassol

1 Bedroom

1 Bathroom

50.4 m² Covered

Description

- 1 bedroom
- 1 W/C
- Internal Area 50.4m²
- Covered Verandas 10.3m²
- Covered Parking
- Storage
- Energy Efficiency "A"

Covered veranda	10.3 m ²
Parking spaces	1
Energy efficiency rating	A
Year of construction	2027
Status	Under construction



Facilities

✓ Aircondition · Provision ✓ Parking · Covered ✓ Elevator ✓ Storage ✓ Solar water heater

Features

✓ Veranda ✓ Ceramic tiles ✓ Modern design ✓ Alarm system (provision) ✓ Double glazing
✓ Pressurized water system ✓ Door screen ✓ Pipe-in-pipe plumbing system
✓ Shutters, electric (provision) ✓ Easy access to main roads ✓ Sound insulation
✓ Thermal insulation ✓ Smart home automation

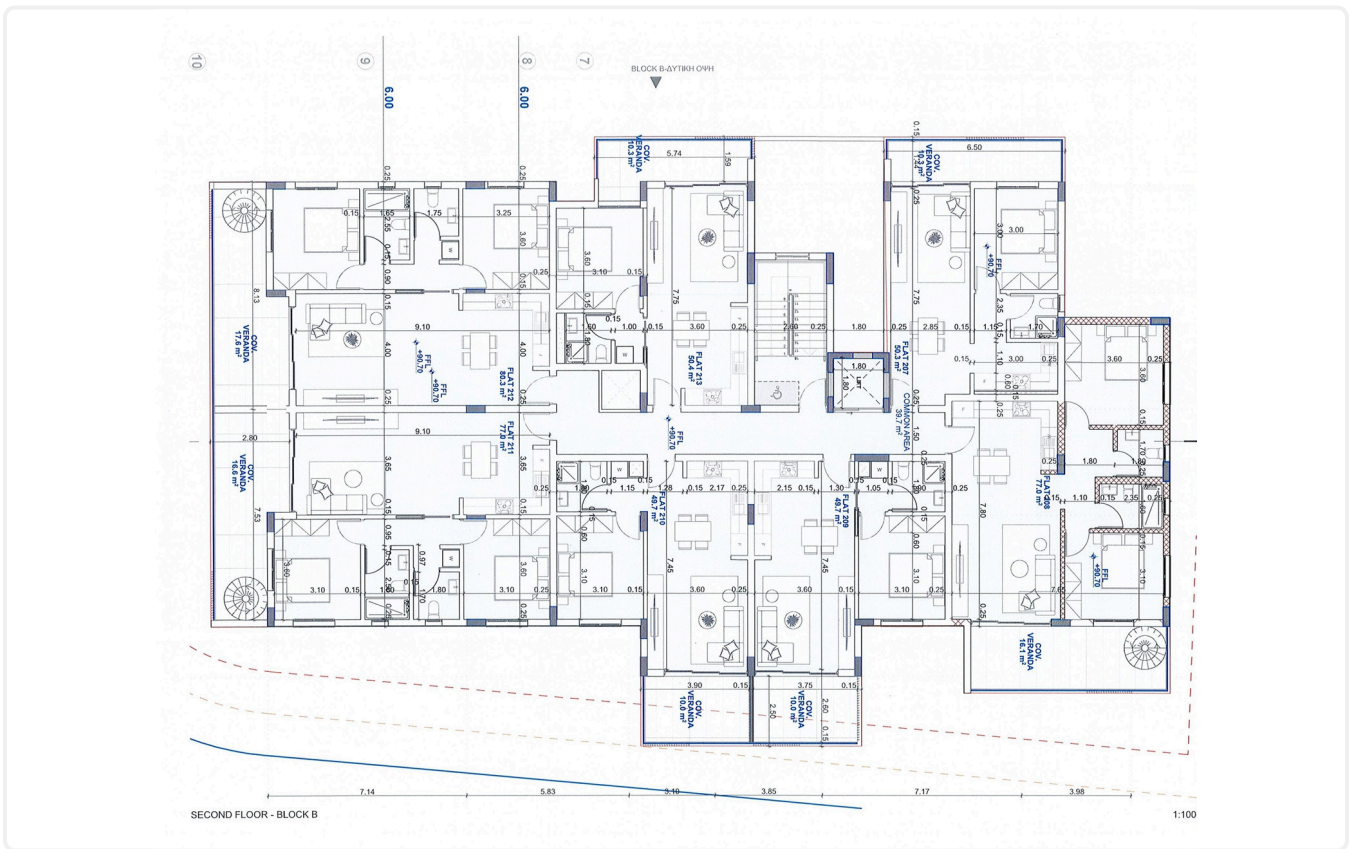
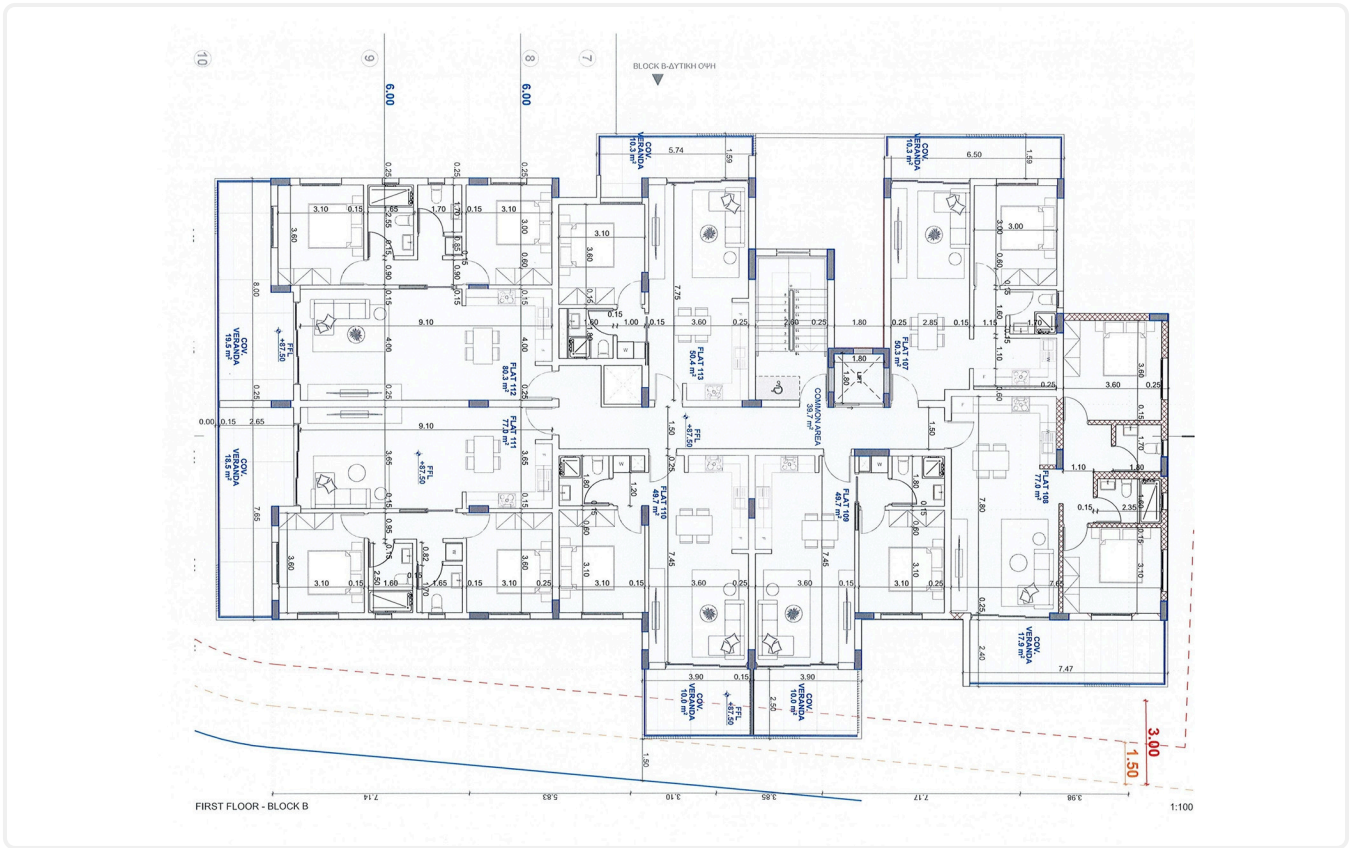
Gallery

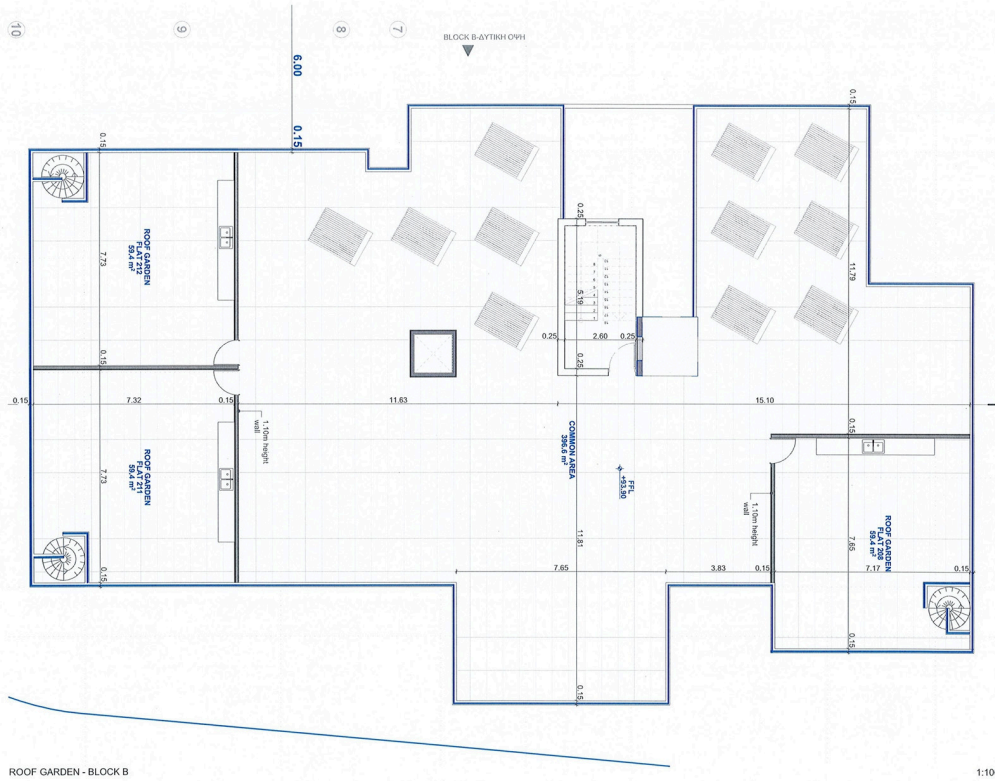






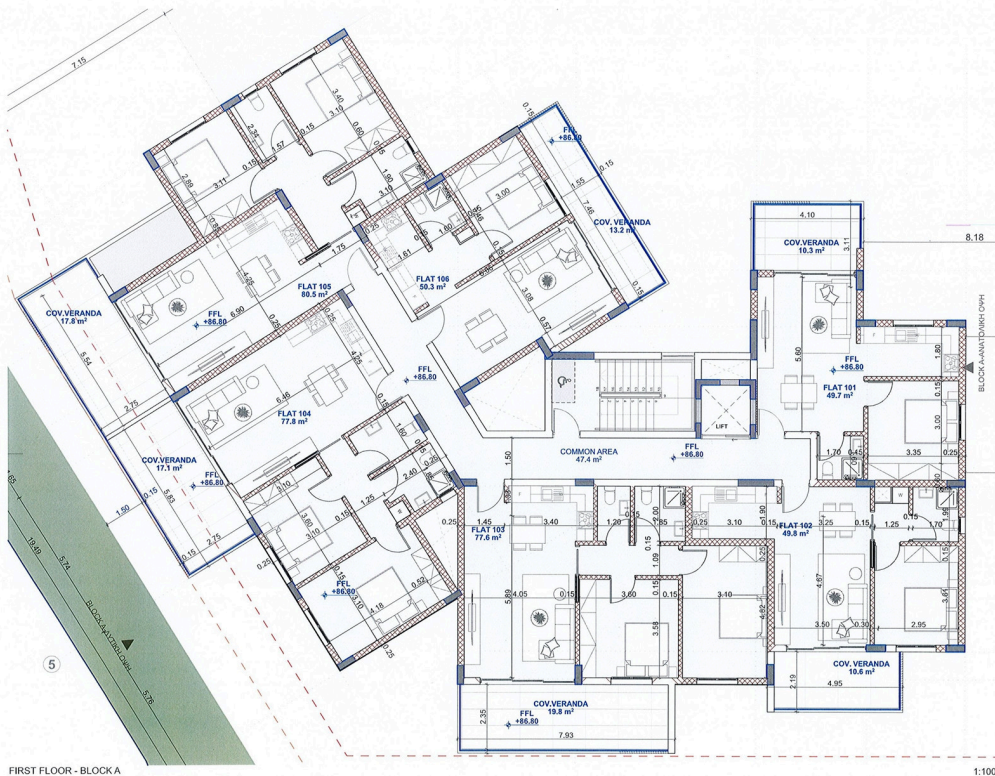
Floor plans





ROOF GARDEN - BLOCK B

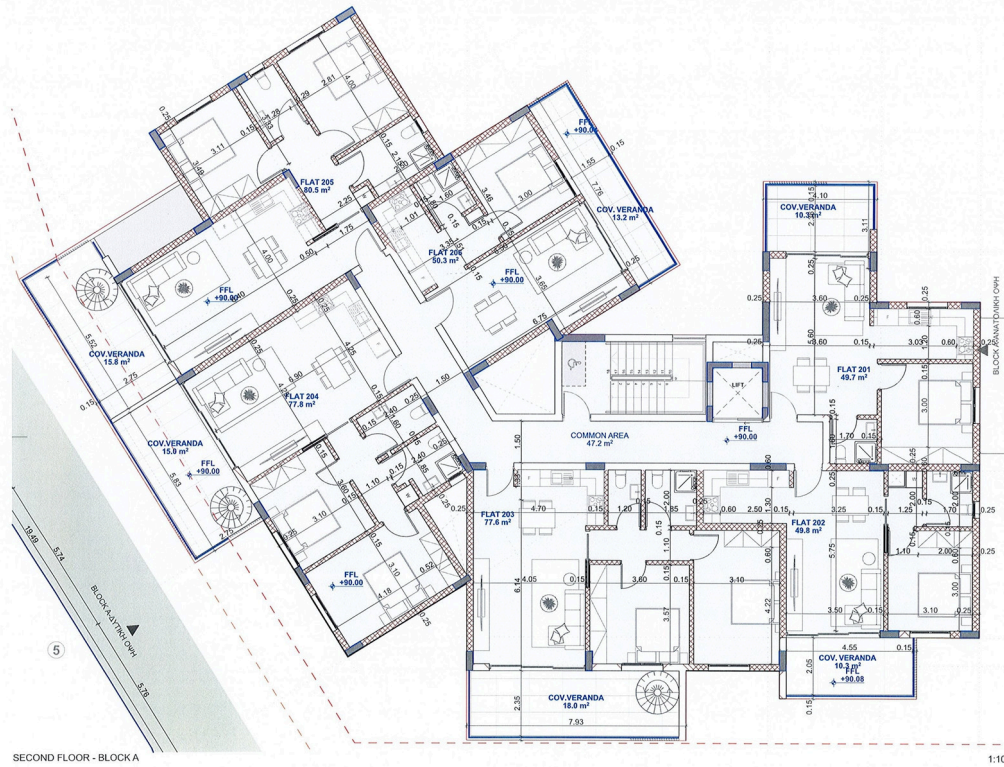
1:100



FIRST FLOOR - BLOCK A

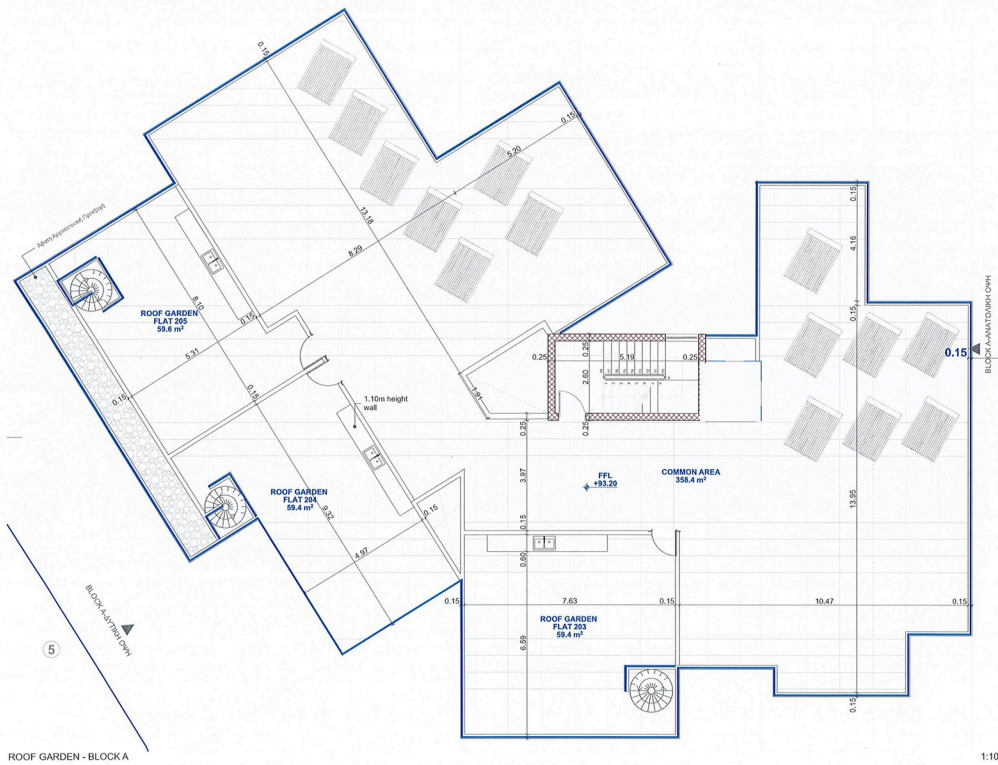
1:100





SECOND FLOOR - BLOCK A

1:100



ROOF GARDEN - BLOCK A

1:100

