



Reference 14164

2 Bed Apartment in Potamos Germasogeias, Limassol

€605,000 +VAT

Potamos Germasogeias, Limassol

2 Bedrooms

2 Bathrooms

85 m² Covered

Description

- 2 bedrooms
- 2 W/C
- Internal Area 85m²
- Covered Verandas 21m²
- 2 Parking Spaces
- Storage
- Communal Swimming Pool
- Energy Efficiency "A"
- Walking distance to the sea, parks, supermarkets, pharmacies, and public transportation

Covered veranda 21 m²

Parking spaces 2

Energy efficiency rating A

Year of construction 2026

Status Under construction



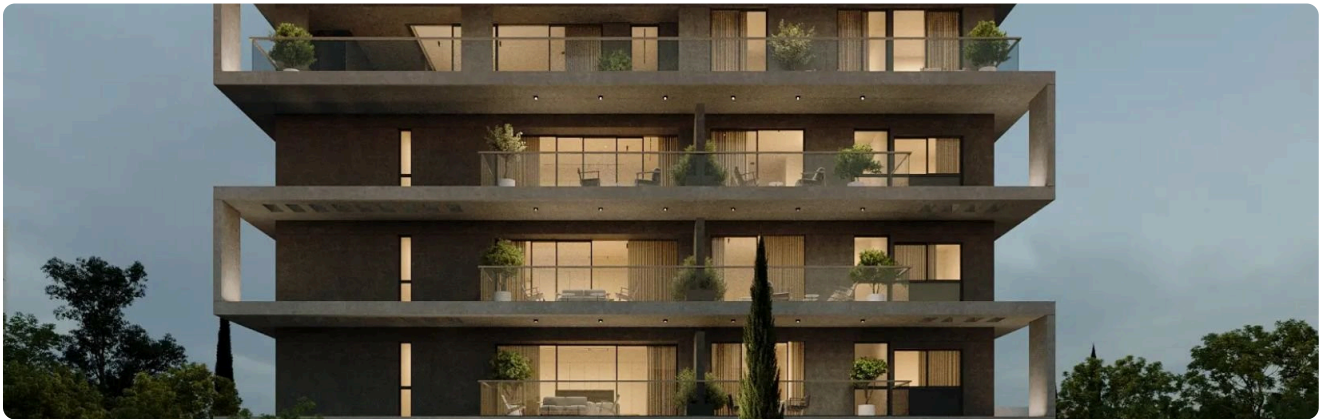
Facilities

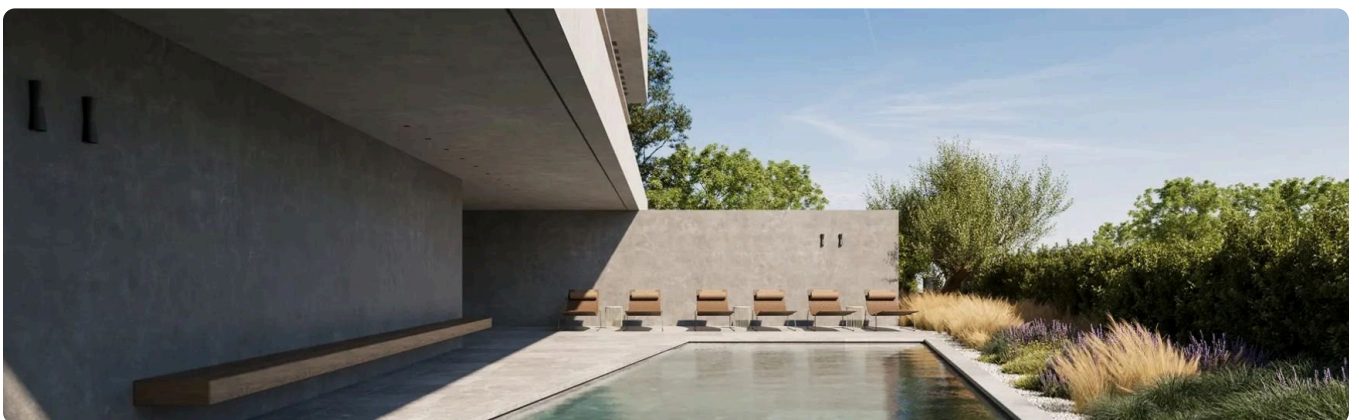
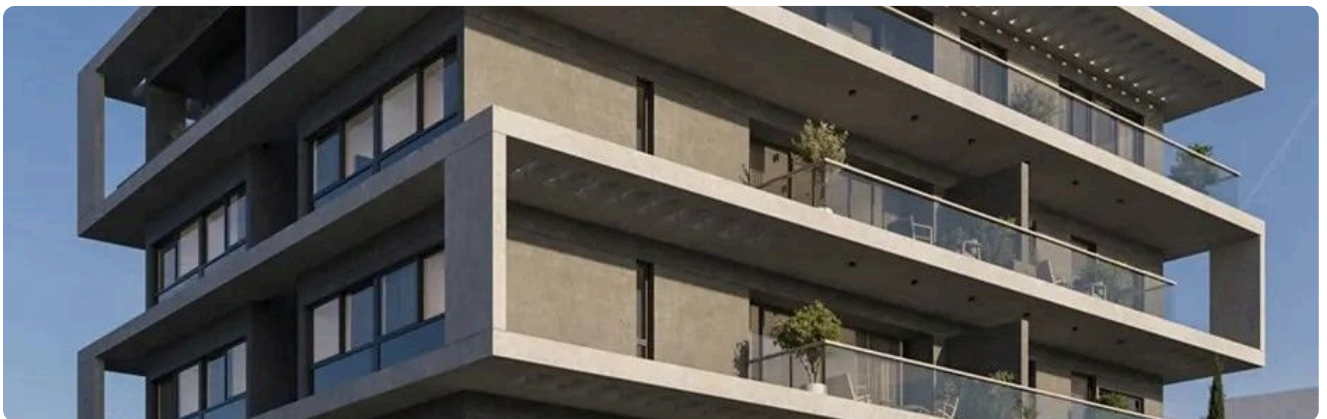
✓ Parking · Covered ✓ Pool · Communal ✓ Storage

Features

✓ Veranda ✓ Modern design ✓ Sea view ✓ Walking distance to beach ✓ Near amenities
✓ Open plan ✓ Smart home automation

Gallery





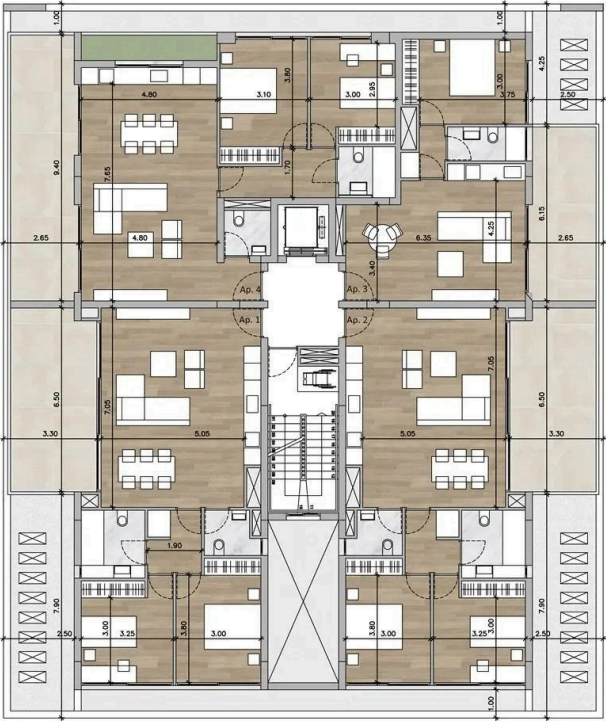


Floor plans

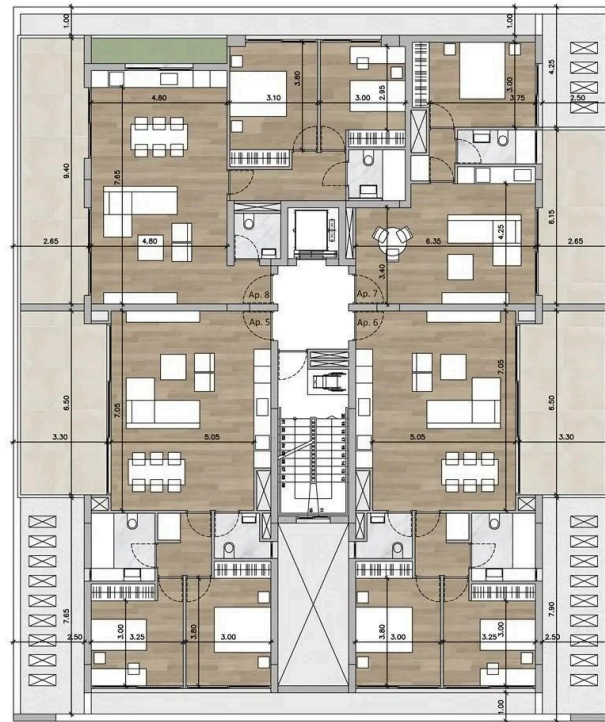
GROUND FLOOR



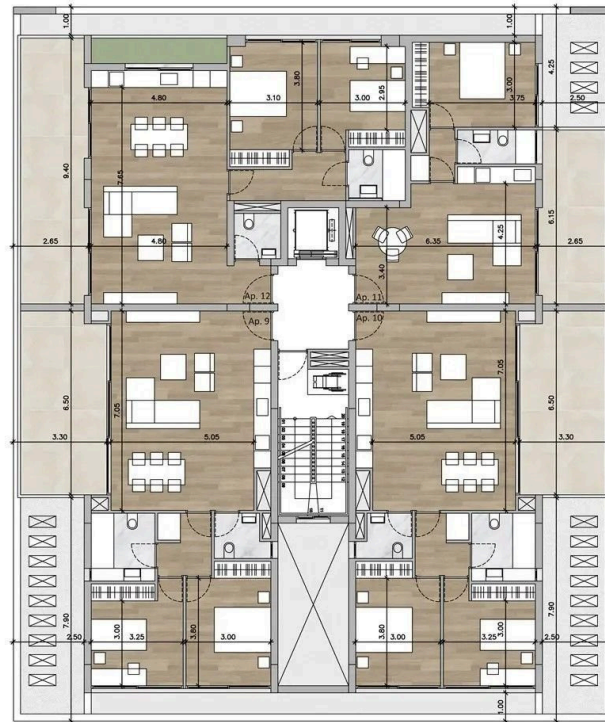
FIRST FLOOR



SECOND FLOOR



THIRD FLOOR



This architectural floor plan depicts a symmetrical building layout. The overall width is 21.20 units, with 2.50 units on each side and 16.20 units in the center. The total length is 16.20 units. The plan is divided into four quadrants by a central vertical corridor and a horizontal corridor. The central vertical corridor contains a staircase and a central entrance area. The horizontal corridor contains two large rectangular pools, each measuring 5.50 units by 2.50 units. The pools are separated by a central wall and flanked by smaller rectangular areas, each measuring 2.50 units by 0.65 units. The outer walls are decorated with a repeating pattern of diamond-shaped windows. The plan includes various dimensions and labels for different areas and features.