



Reference 1416

New 3 bed house in Kallithea-Carlsberg

€275,000 +VAT

Kallithea / Carlsberg, Nicosia

3 Bedrooms | 3 Bathrooms | 174 m² Covered

Description

??3 bedrooms
 ??3 W/C
 ??Internal Area 155m²
 ??Covered Verandas 19m²
 ??Plot Area 269m²
 ??Energy Efficiency "A"

Newly built (off plan) two-storey semi-detached house in a beautiful area in Kallithea Dali.

A residential development for modern houses on large plots is located in a new popular area of Nicosia, with excellent access to the highway and the city center.

House consisting of open plan living room-sitting room-dining room-kitchen and guest toilet on the ground floor.

Large covered and uncovered terraces.

Upstairs 3 bedrooms, one of which have a private bathroom, a separate full bathroom and a large wardrobe.

Plot	269 m ²
Covered veranda	19 m ²
Parking spaces	2
Energy efficiency rating	A
Status	Under construction



Exterior large yard. front and rear with the possibility of a private pool, optional, at an additional cost.

Anti-seismic construction with a single sandal on the foundation and a reinforced concrete frame according to the Cyprus Anti-Seismic Code.

Complete application of thermal facade on the external surfaces.

Aluminum frames with high thermal and sound insulation index with double glazing.

Complete installation of central under floor heating with heat pumps, separately per floor.

Hydraulic installation in pipe in pipe, with water pressure system.

Dual energy solar water heater installed.

Provision with piping for air conditioners (split units).

Installation of photovoltaic system.

The house is certified with energy efficiency index "A" according to the energy study.

An ideal choice for living , away from the hustle and bustle of the city but with easy and fast access to all directions, city center, other cities, airport ports and other services.



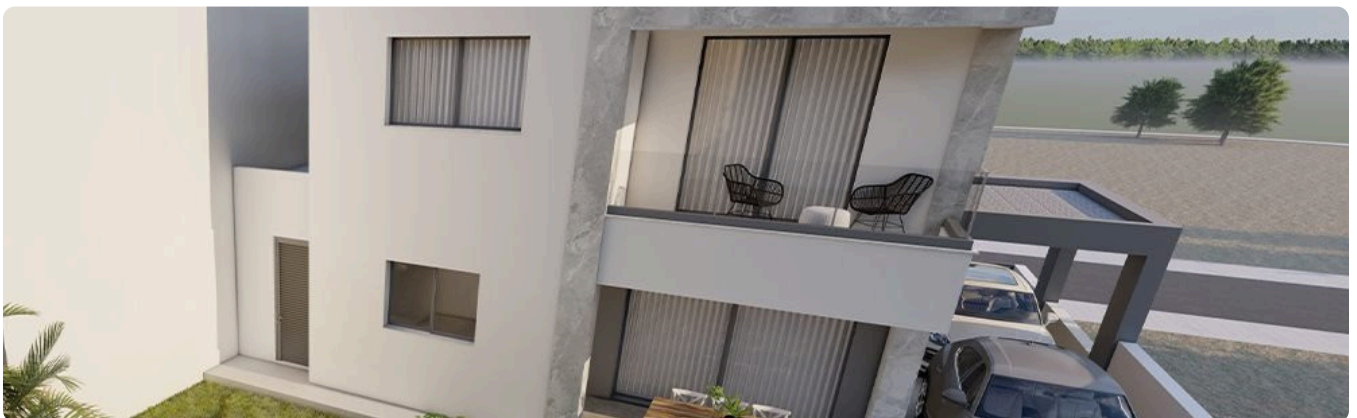
Facilities

- ✓ Aircondition · Provision
 - ✓ Storage
 - ✓ Gated complex
 - ✓ Solar water heater
 - ✓ Solar photovoltaic panels
-

Features

- ✓ Guest WC
 - ✓ Granite countertops
 - ✓ Kitchen appliances
 - ✓ Double glazing
 - ✓ Garden
 - ✓ Pressurized water system
 - ✓ Fitted wardrobes
 - ✓ Connected to electric mains
 - ✓ Energy efficient doors/windows
 - ✓ Municipal water/sewage
 - ✓ Thermal insulation
-

Gallery



BED.	COV.AREA m ²	BOILER m ²	COV. VER. m ²	PLOT m ²
3	155.55	5.35	19.80	269
3	154.09	5.35	22.15	269



Floor plans

