



Reference 14013

Office in Limassol Center

€1,290,000 +VAT

Limassol Center, Limassol

3 Bathrooms | 98.81 m² Covered

Description

- Internal Area 98.81m²
- Covered Verandas 60.85m²
- Underground Parking
- Flexible open-plan workspace
- Server Room
- Kitchen
- 700m from the sea
- Close to several amenities

Covered veranda	60.85 m ²
Energy efficiency rating	A
Year of construction	2029
Status	Off plan



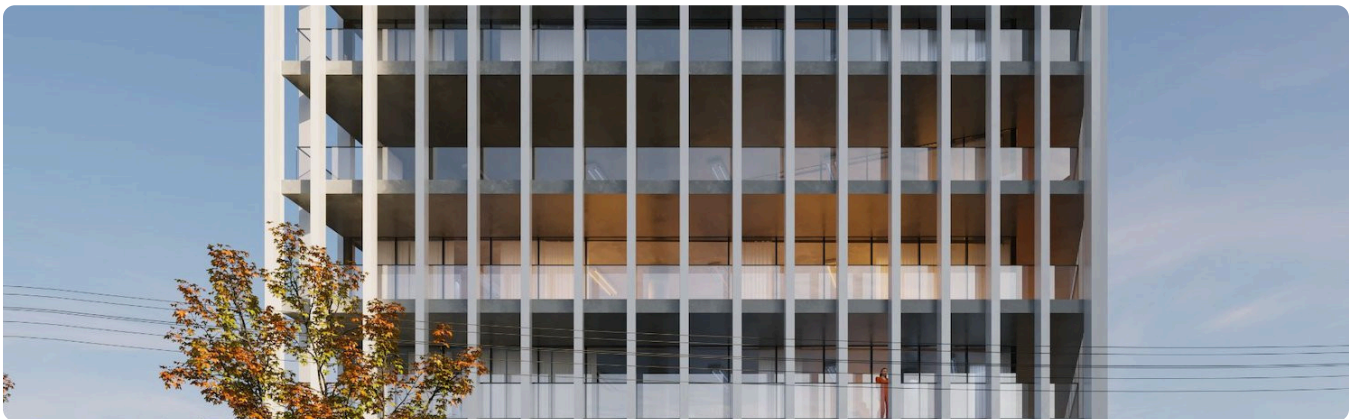
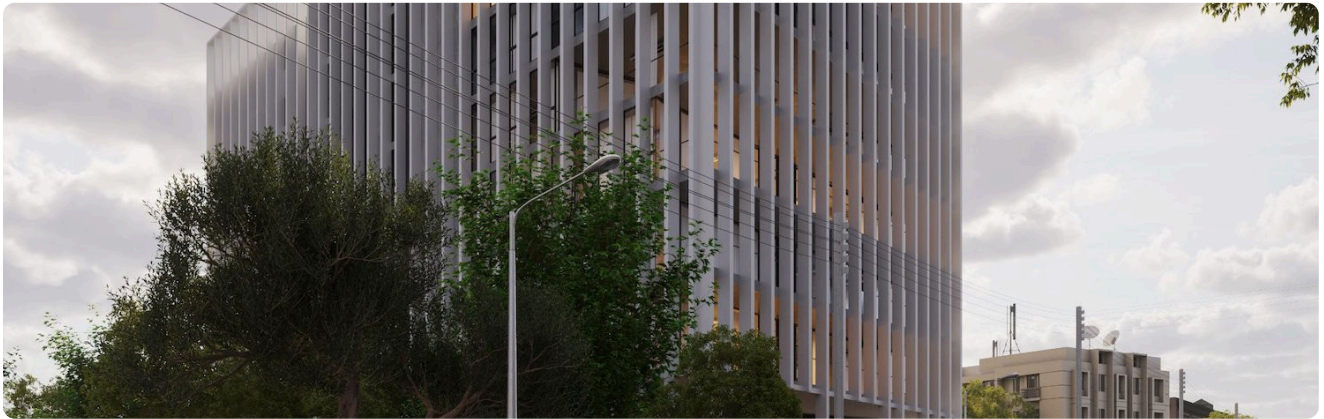
Facilities

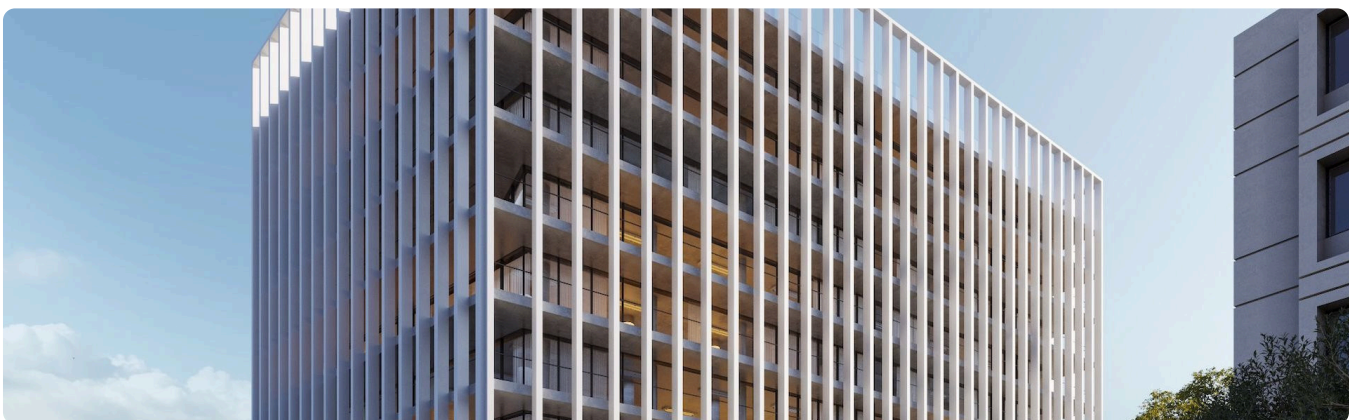
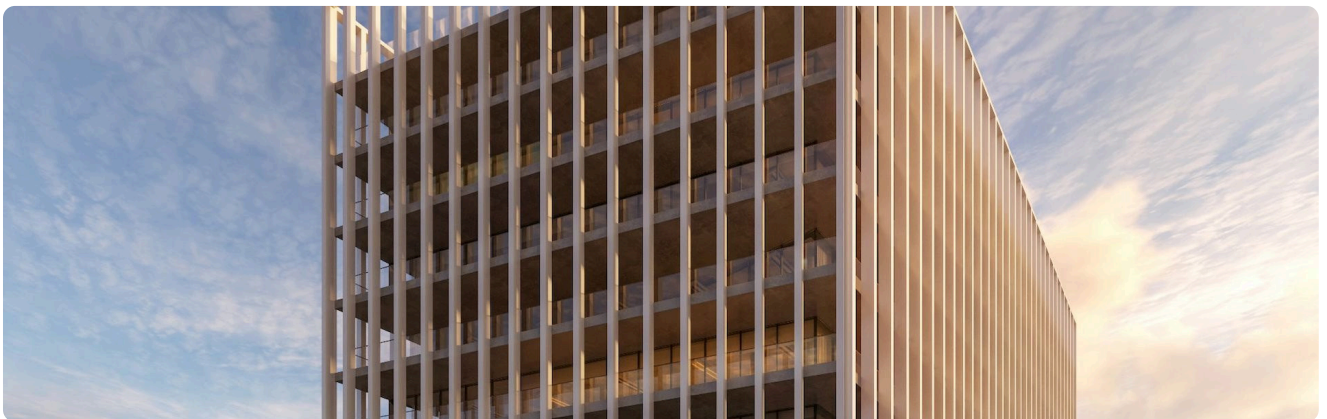
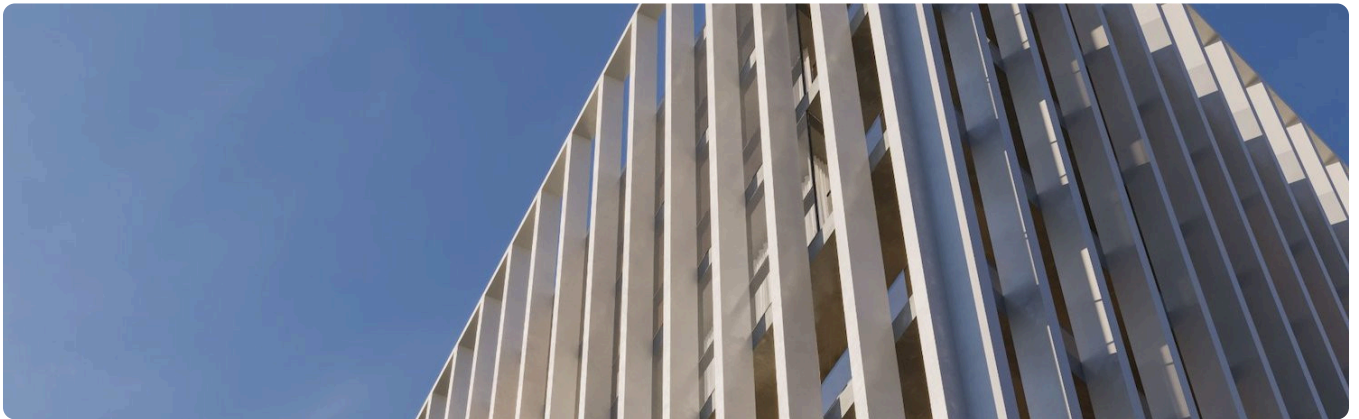
✓ Parking · Underground

Features

✓ Reception ✓ Ceramic tiles ✓ Heart of city center ✓ Easy access to main roads
✓ Thermal insulation ✓ Near amenities ✓ High ceilings ✓ Lobby ✓ Veranda ✓ City view
✓ Server room ✓ Kitchen

Gallery







Floor plans

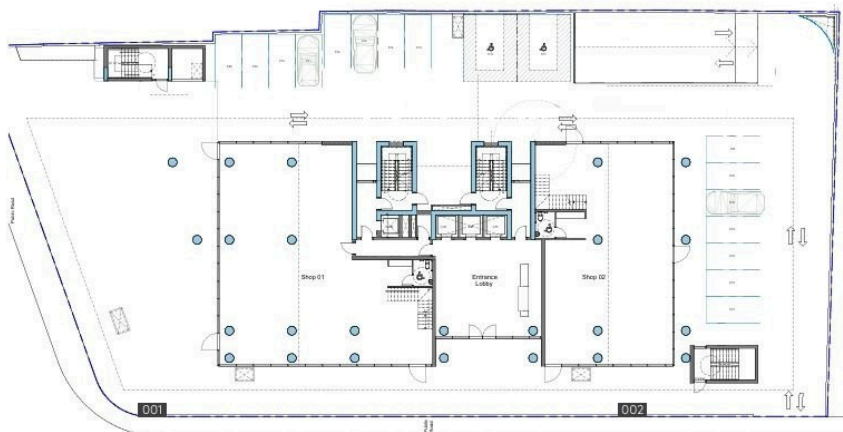
parking level -2



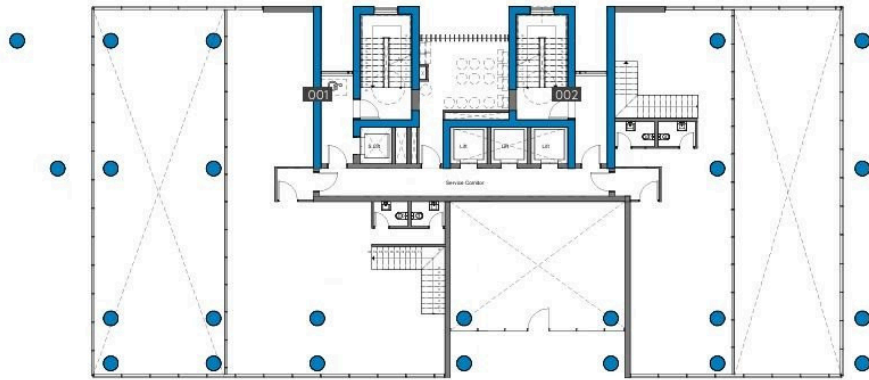
parking level -1



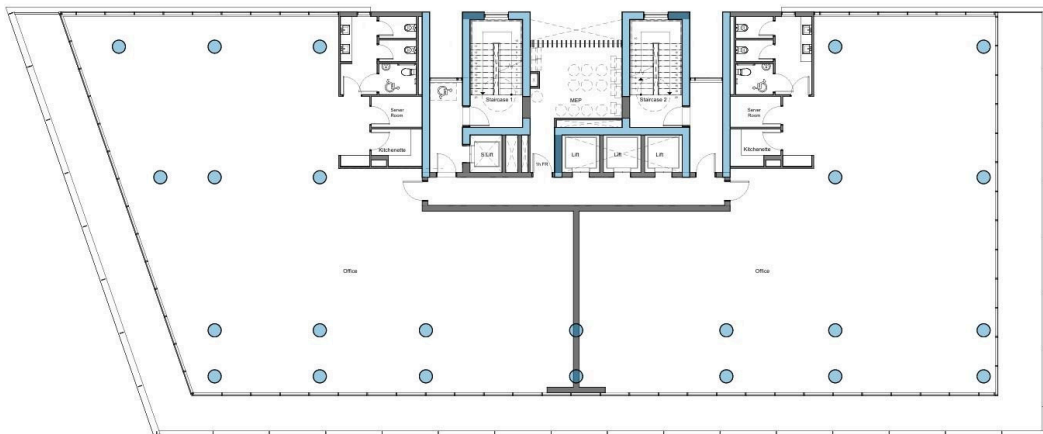
ground floor



mezzanine



typical floor plan



5th floor plan

