

Reference 13320

3 Bed Apartment in Limassol Center

€575,000 +VAT

Limassol Center, Limassol

3 Bedrooms | 2 Bathrooms | 92 m² Covered

Description

- 3 bedrooms
- 2 W/C
- Internal Area 92m²
- Covered Verandas 32m²
- Covered Parking
- Central A/C System
- Photovoltaic Panels
- Energy Efficiency "A"

Covered veranda	32 m ²
Parking spaces	1
Energy efficiency rating	A
Year of construction	2027
Status	Under construction



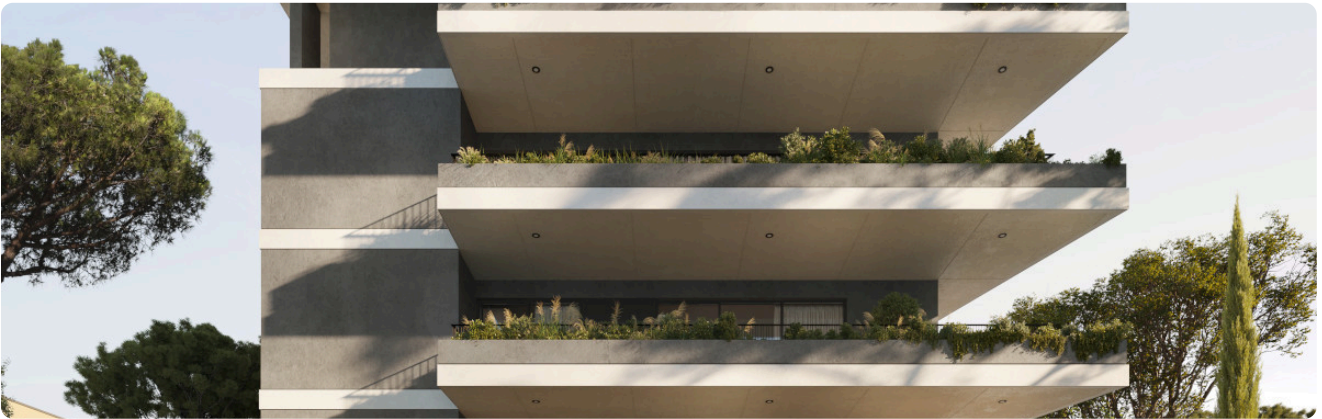
Facilities

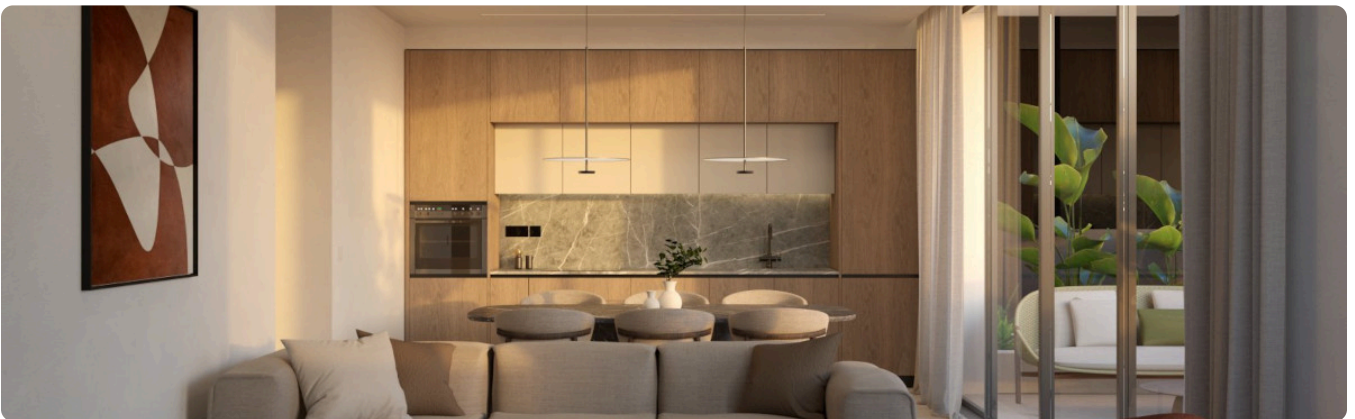
✓ Aircondition · Central system ✓ Parking · Covered ✓ Elevator ✓ Solar photovoltaic panels

Features

✓ Veranda ✓ Modern design ✓ Near amenities ✓ Open plan ✓ Investment opportunity
✓ Bright ✓ Electric car charger (provision) ✓ High ceilings ✓ Easy access to main roads
✓ Thermal insulation

Gallery



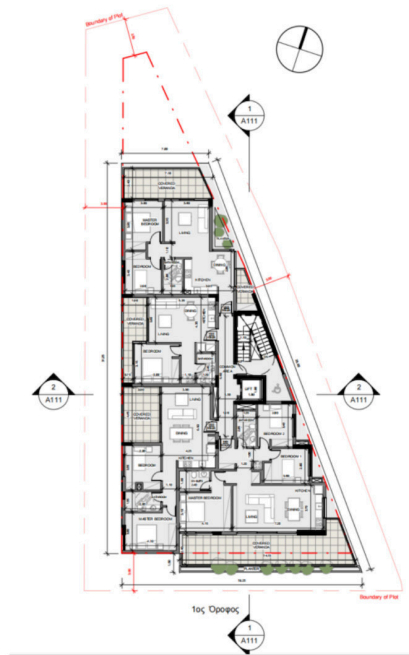




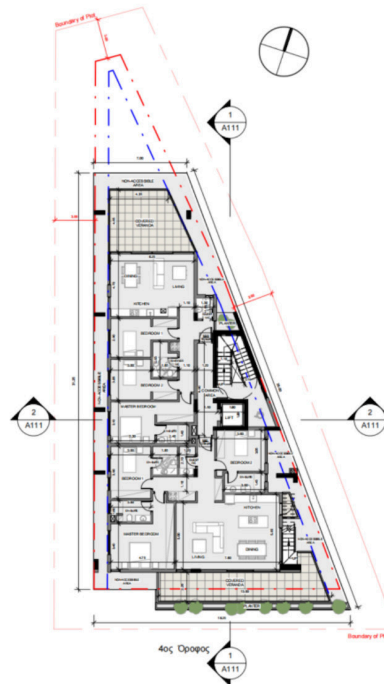


Floor plans

1ST & 2ND & 3RD FLOOR PLAN



4TH FLOOR PLAN



ROOF GARDEN FLOOR PLAN

