



Reference 1315

3 bed Houses in Pera Chorio-Nisou

€210,000

Pera Chorio / Nisou, Nicosia

3 Bedrooms | 3 Bathrooms | 146 m² Covered

Description

SOLD

- ◆ 3 Bedrooms
- ◆ 3 W/C
- ◆ Internal Area 146m²
- ◆ Plot 176m²

Eligible for a Government Subsidy <http://bit.ly/3mgYKMW> up to €20,000

Newly built (off plan) two-storey detached house in a beautiful area in Pera Chorio.

The village Nisou is part of the governmental scheme of 'Housing Plan for the Rehabilitation of Mountainous and other Areas' since April 4th 2022 of the Ministry of Interior

A residential development for modern houses on large plots is located in a new popular area of Nicosia, with excellent access to the highway and the city center.

Plot	176 m ²
Parking spaces	2
Energy efficiency rating	A
Status	Off plan



House consisting of open plan living room-sitting room-dining room-kitchen and guest toilet on the ground floor.

Large covered and uncovered terraces.

Upstairs 3 bedrooms, one of which have a private bathroom, a separate full bathroom and a large wardrobe.

Exterior large yard. front and rear with the possibility of a private pool, optional, at an additional cost.

Anti-seismic construction with a single sandal on the foundation and a reinforced concrete frame according to the Cyprus Anti-Seismic Code.

Complete application of thermal facade on the external surfaces.

Aluminum frames with high thermal and sound insulation index with double glazing.

Hydraulic installation in pipe in pipe, with water pressure system.

Dual energy solar water heater installed.

Provision with piping for air conditioners (split units).

Installation of photovoltaic system.

The house is certified with energy efficiency index "A" according to the energy study.

An ideal choice for living , away from the hustle and bustle of the city but with easy and fast access to all directions, city center, other cities, airport ports and other services.



Facilities

- ✓ Aircondition · Split system
 - ✓ Storage
 - ✓ Solar water heater
-

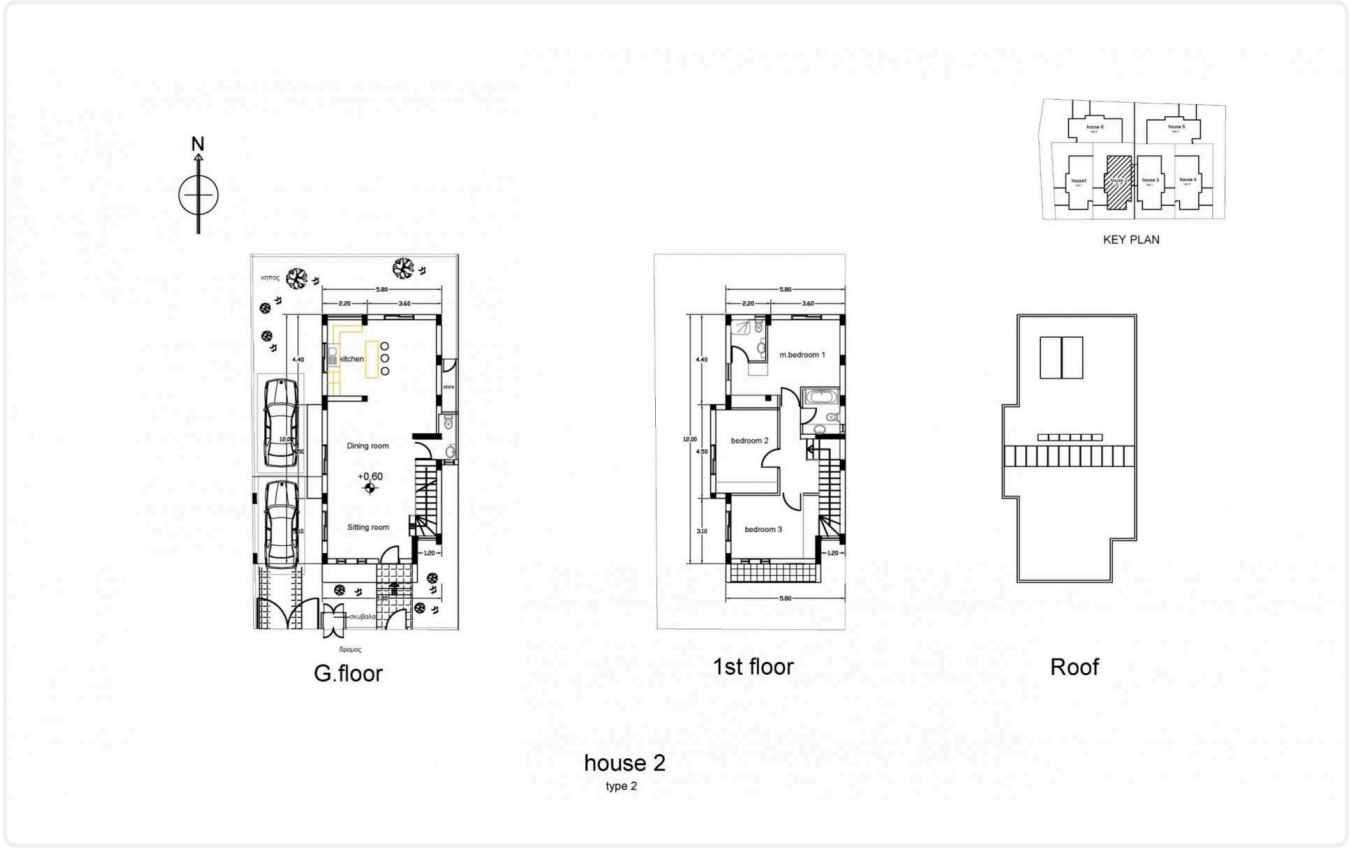
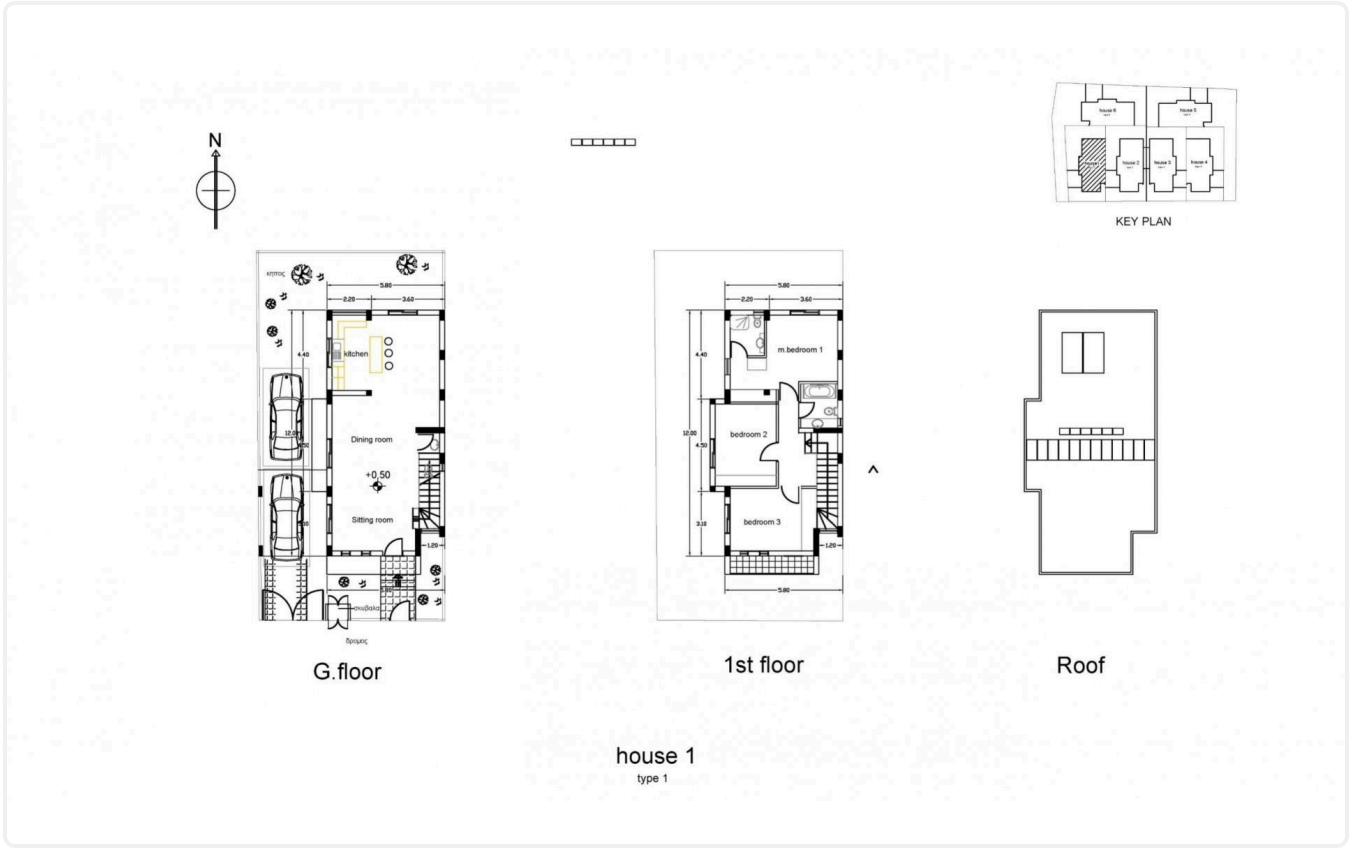
Features

- ✓ En suite Bathroom
 - ✓ Laundry room
 - ✓ Alarm system
 - ✓ Connected to electric mains
-

Gallery

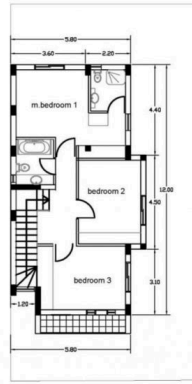


Floor plans

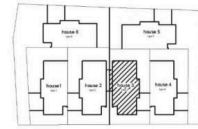




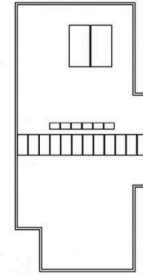
G.floor



1st floor



KEY PLAN

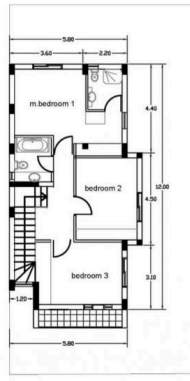


Roof

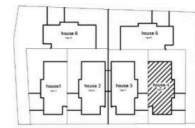
house 3
type 3



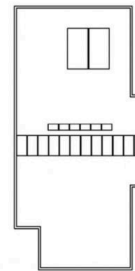
G.floor



1st floor



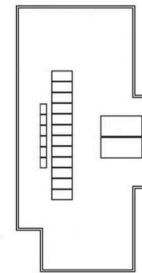
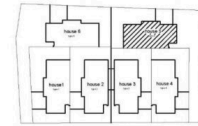
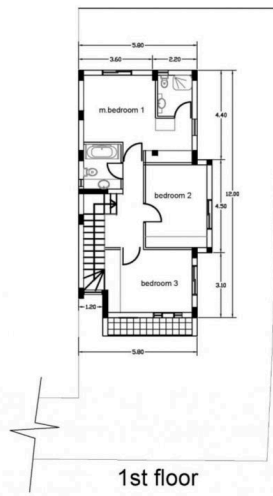
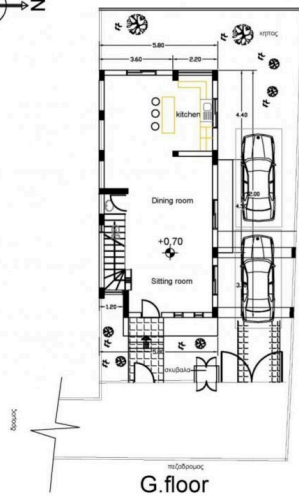
KEY PLAN



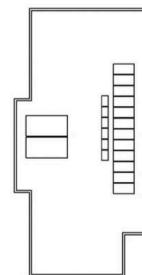
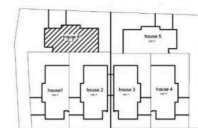
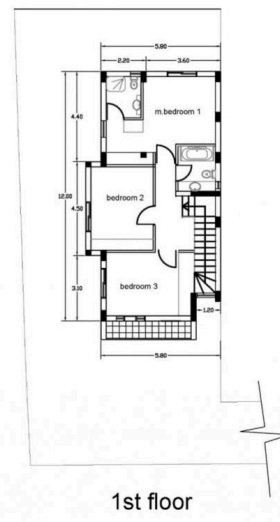
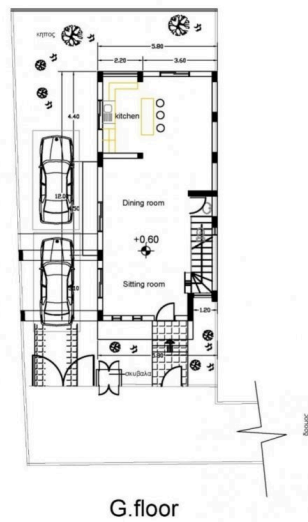
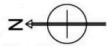
Roof

house 4
type 4





house 5
type 5



house 6
type 6

