



Reference 12808

## 3 Bed Independent Apartment in Latsia, Nicosia

**€235,000** +VAT

Latsia, Nicosia

3 Bedrooms

2 Bathrooms

102.2 m<sup>2</sup> Covered

### Description

- 3 bedroom
- 2 W/C
- Internal Area 102.20m<sup>2</sup>
- Covered Verandas 24m<sup>2</sup>
- En Suite Bathroom
- Guest WC
- Covered Parking
- Storage
- Energy Efficiency "A"
- Photovoltaic Panels

Covered veranda	24 m <sup>2</sup>
Parking spaces	1
Energy efficiency rating	A
Year of construction	2026
Status	Under construction



## Facilities

- ✓ Aircondition · Split system
  - ✓ Parking · Covered
  - ✓ Elevator
  - ✓ Storage
  - ✓ Solar water heater
  - ✓ Solar photovoltaic panels
- 

## Features

- ✓ Guest WC
  - ✓ Veranda
  - ✓ Ceramic tiles
  - ✓ En suite bathroom
  - ✓ Modern design
  - ✓ Near amenities
  - ✓ Open plan
  - ✓ Pressurized water system
  - ✓ Combined kitchen and dining area
  - ✓ Easy access to highway
  - ✓ Thermal insulation
- 

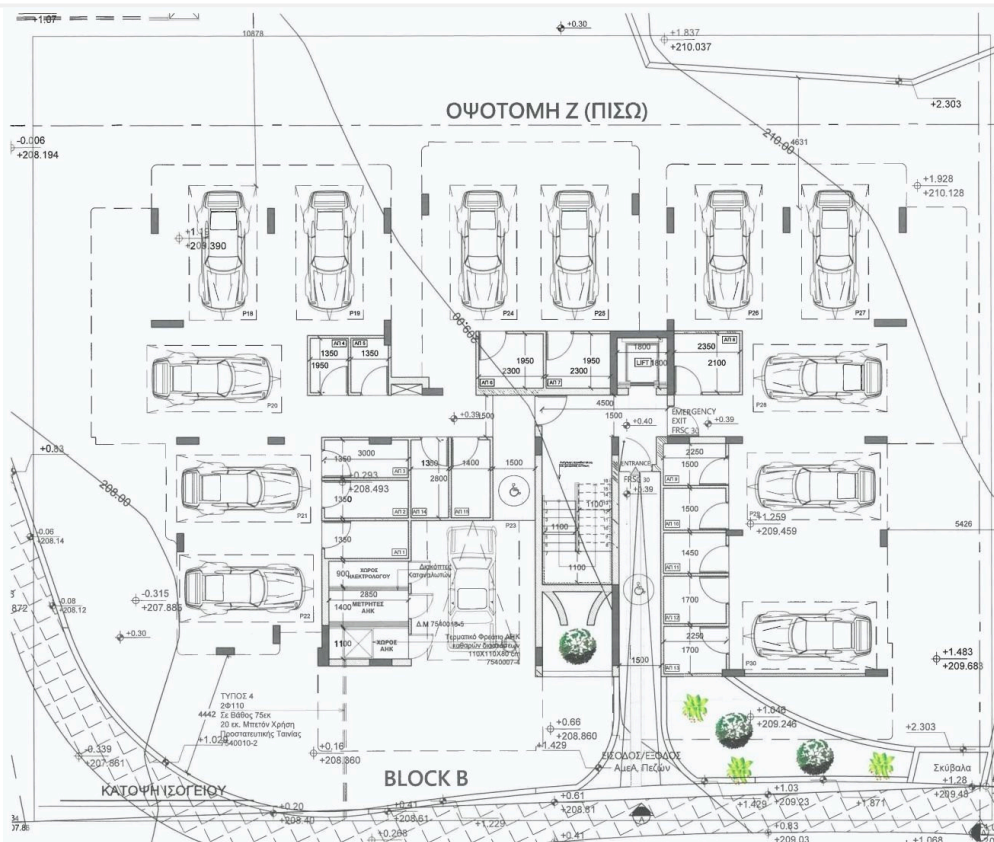
## Gallery



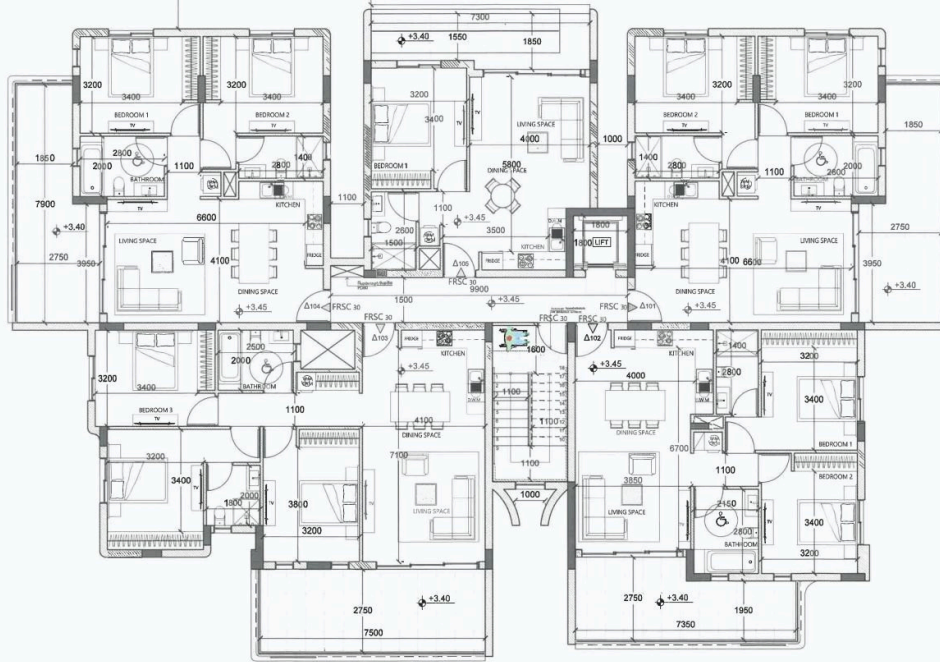




## Floor plans



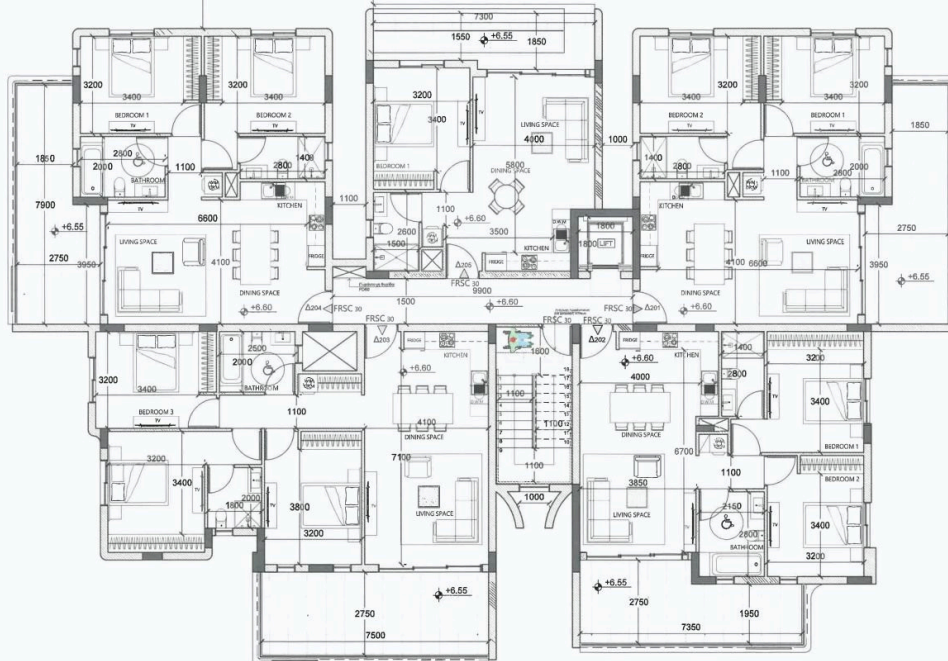
# ΟΨΟΤΟΜΗ Ζ (ΠΙΣΩ)



BLOCK B

ΚΑΤΟΨΗ 1ΟΥ ΟΡΟΦΟΥ

# ΟΨΟΤΟΜΗ Ζ (ΠΙΣΩ)



BLOCK B

ΚΑΤΟΨΗ 2ΟΥ ΟΡΟΦΟΥ



The floor plan illustrates the layout of the 1st floor, divided into four distinct residential units. Each unit is equipped with a bedroom, living space, dining space, kitchen, and bathroom. The plan also shows a central staircase and a utility area. Dimensions are provided for various rooms and overall unit footprints. Key features include a central staircase, multiple entrances, and a central utility area. The plan is oriented with North at the top.

ΚΑΤΟΨΗ 3ΟΥ ΟΡΟΦΟΥ

The floor plan shows a large central hall with a staircase and elevators. The staircase is located in the upper left corner, with a landing area of 850. The elevators are located in the upper right corner, with a landing area of 1800. The central hall has a total area of 7900. The plan includes dimensions for various areas, such as 3950, 2550, and 1100. The level markers are +12.85 and +12.90. The plan also shows a north arrow and a scale bar.

ΚΑΤΟΨΗ ΟΡΟΦΗΣ