



Reference 12760

1 Bed Apartment in Petrou & Pavlou, Limassol

€220,000 +VAT

Apostolou Petrou & Pavlou, Limassol

1 Bedroom | 1 Bathroom | 56 m² Covered

Description

- 1 bedroom
- 1 W/C
- Internal Area 56m²
- Covered Verandas 16.1m²
- Covered Parking
- Storage
- Energy Efficiency "A"

Covered veranda 16.1 m²

Parking spaces 1

Energy efficiency rating A

Year of construction 2026

Status Under construction



Facilities

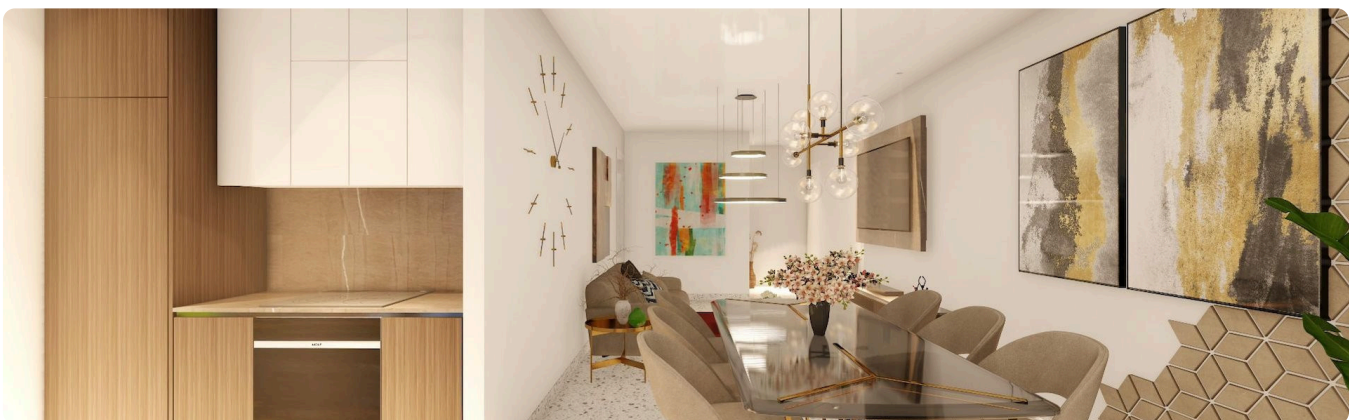
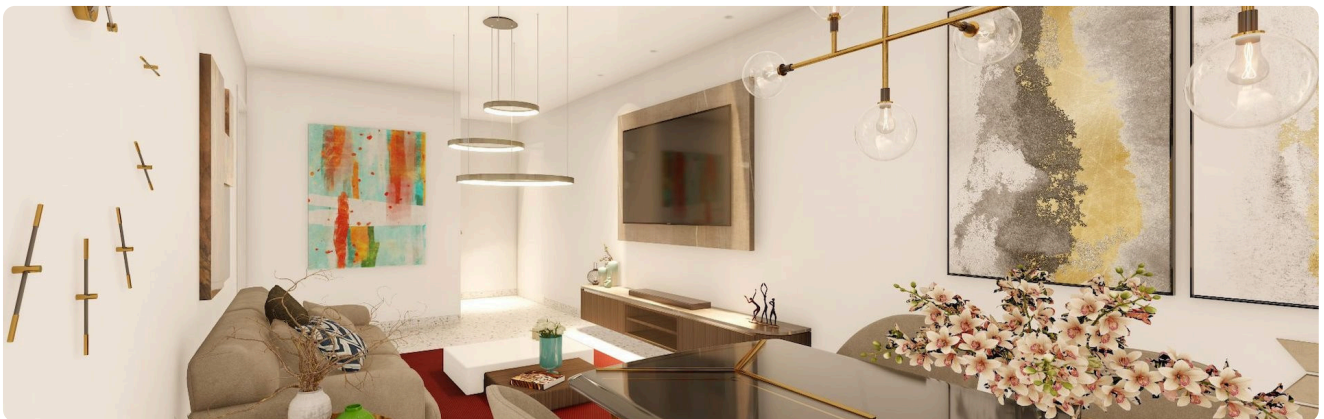
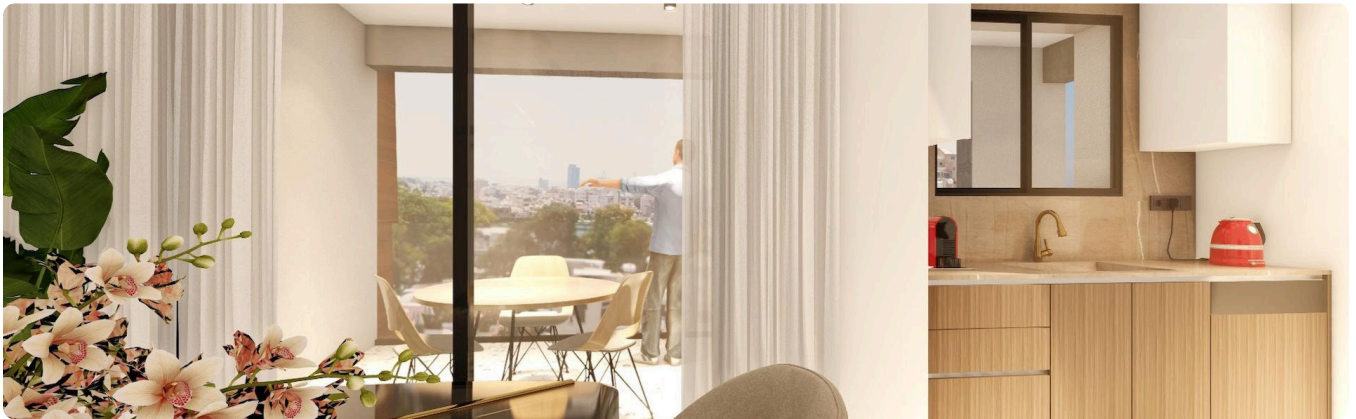
✓ Aircondition · Provision ✓ Parking · Covered ✓ Storage

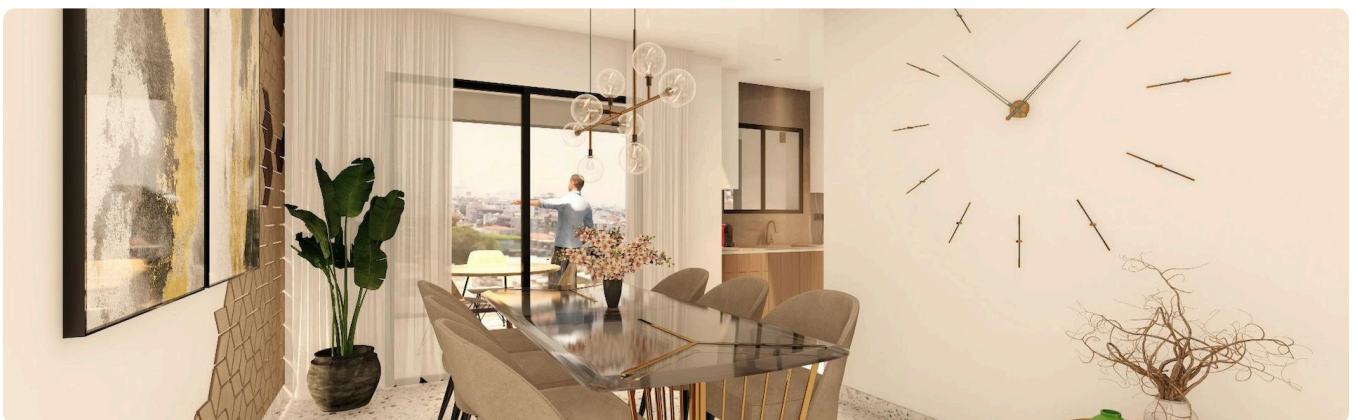
Features

✓ Veranda ✓ Quiet area ✓ Near amenities ✓ Double glazing ✓ Open plan
✓ Easy access to main roads ✓ Thermal insulation

Gallery

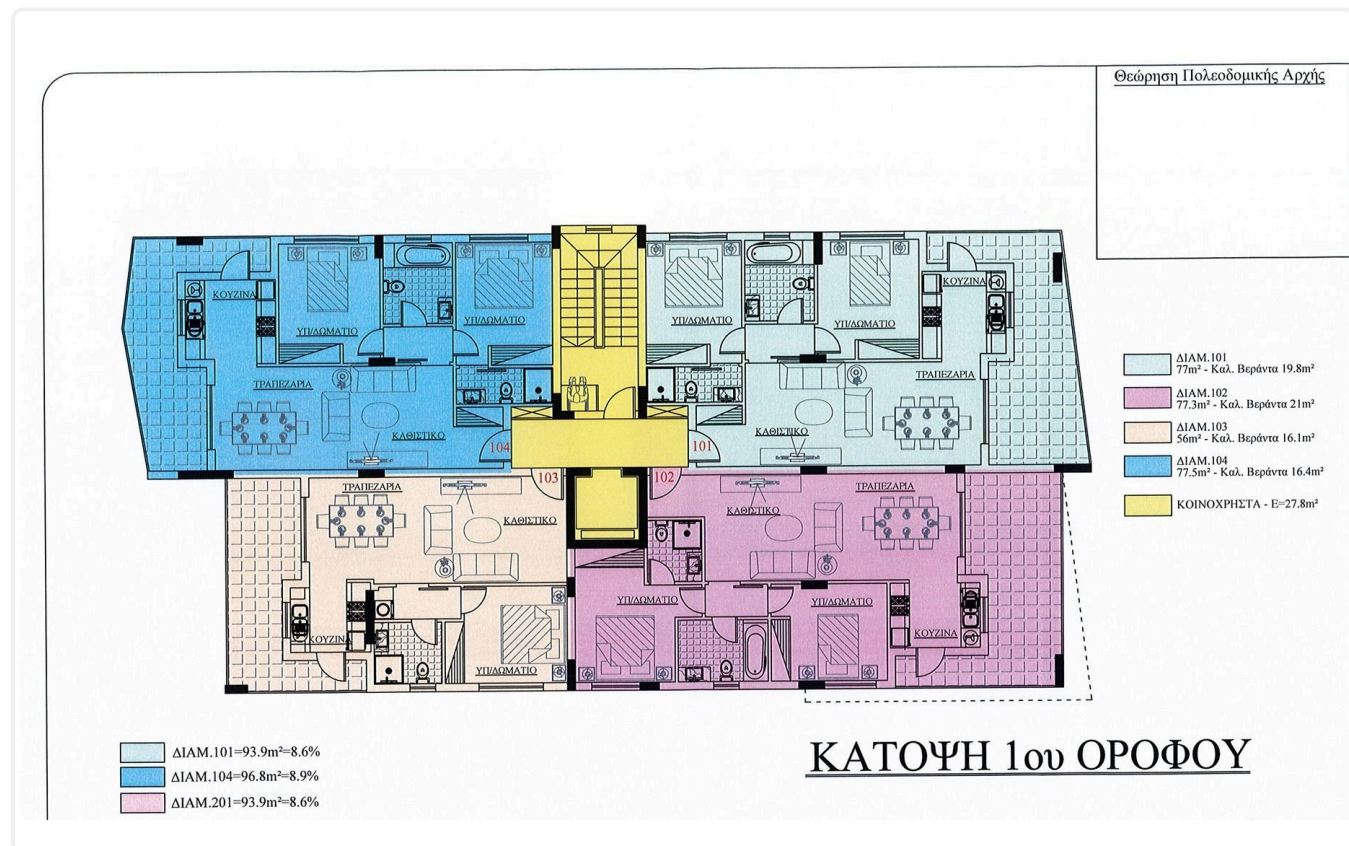
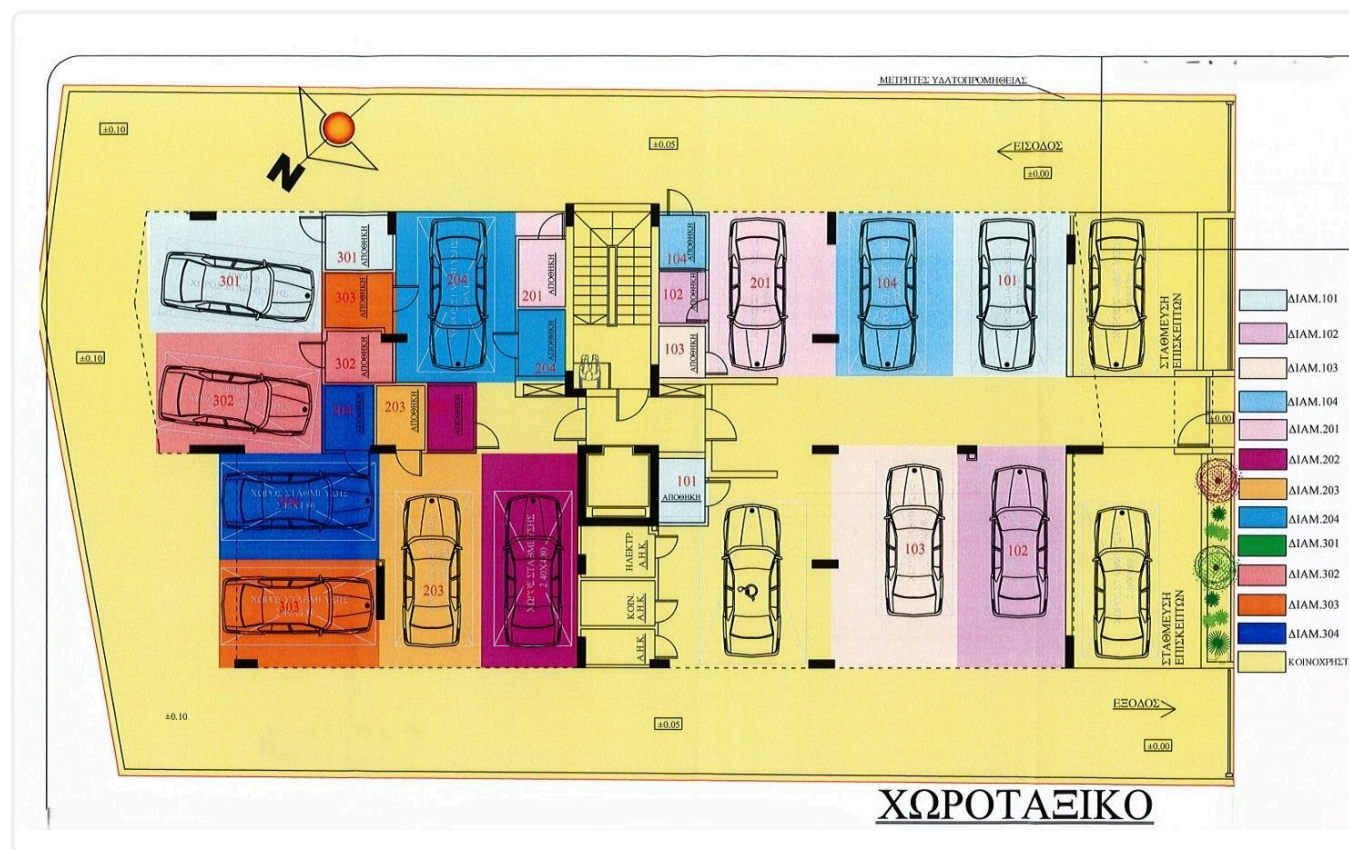








Floor plans



Θεώρηση Πολεοδομικής Αρχής



- ΔΙΑΜ.201
77m² - Καλ. Βεράντα 19.8m²
- ΔΙΑΜ.202
77.3m² - Καλ. Βεράντα 21m²
- ΔΙΑΜ.203
56m² - Καλ. Βεράντα 16.1m²
- ΔΙΑΜ.204
77.5m² - Καλ. Βεράντα 16.4m²
- ΚΟΙΝΟΧΡΗΣΤΑ - Ε=27.8m²

- ΔΙΑΜ.101=93.9m²=8.6%
- ΔΙΑΜ.104=96.8m²=8.9%
- ΔΙΑΜ.201=93.9m²=8.6%

ΚΑΤΟΨΗ 2ου ΟΡΟΦΟΥ

Θεώρηση Πολεοδομικής Αρχής



- ΔΙΑΜ.301
77m² - Καλ. Βεράντα 19.8m²
- ΔΙΑΜ.302
77.3m² - Καλ. Βεράντα 21m²
- ΔΙΑΜ.303
56m² - Καλ. Βεράντα 16.1m²
- ΔΙΑΜ.304
77.5m² - Καλ. Βεράντα 16.4m²
- ΚΟΙΝΟΧΡΗΣΤΑ - Ε=27.8m²

ΚΑΤΟΨΗ 3ου ΟΡΟΦΟΥ

