



Reference 12228

Residential Building with 7 Apartments in Mesa Geitonia, **€2,755,000 +VAT**
Limassol

Mesa Geitonia, Limassol

578.5 m² Covered

Description

- 3 Floors
- 7 Apartments
- Internal Area 578.5m²
- Covered Verandas 162m²
- Uncovered Verandas 10m²
- 7 Covered Parking Spaces
- Storages
- Energy Efficiency "A"

Covered veranda	162 m ²
Uncovered veranda	10 m ²
Parking spaces	7
Energy efficiency rating	A+
Year of construction	2026
Status	Off plan



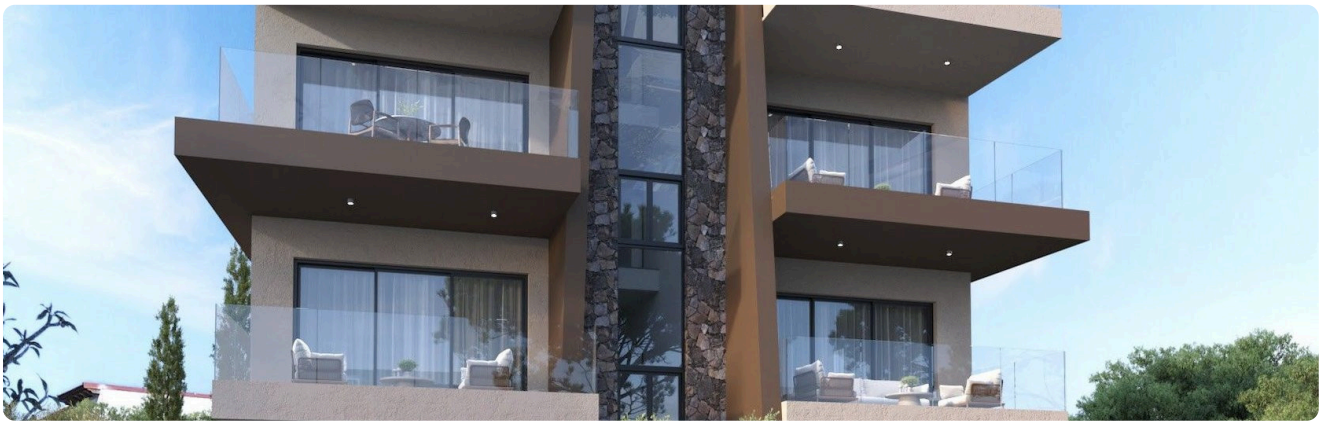
Facilities

✓ Aircondition · Provision ✓ Heating · Provision ✓ Parking · Covered ✓ Elevator ✓ Storage

Features

✓ Veranda ✓ Quiet area ✓ Modern design ✓ Near amenities ✓ Double glazing
✓ Open plan ✓ Mountain view ✓ Shutters, electric (provision) ✓ Spacious rooms
✓ Easy access to highway ✓ Thermal insulation

Gallery





Floor plans

