



Reference 11946

2 Bed Independent Penthouse Apartment in Kato Polemidia, **€195,000** +VAT Limassol

Kato Polemidia, Limassol

2 Bedrooms | 1 Bathroom | 75 m² Covered

Description

- 2 bedrooms
- 1 W/C
- Internal Area 75m²
- Covered Vernadas 10m²
- A/C
- Photovoltaic Panels
- Energy Efficiency "A"

Covered veranda	10 m ²
Parking spaces	1
Energy efficiency rating	A
Year of construction	2026
Status	Under construction



Facilities

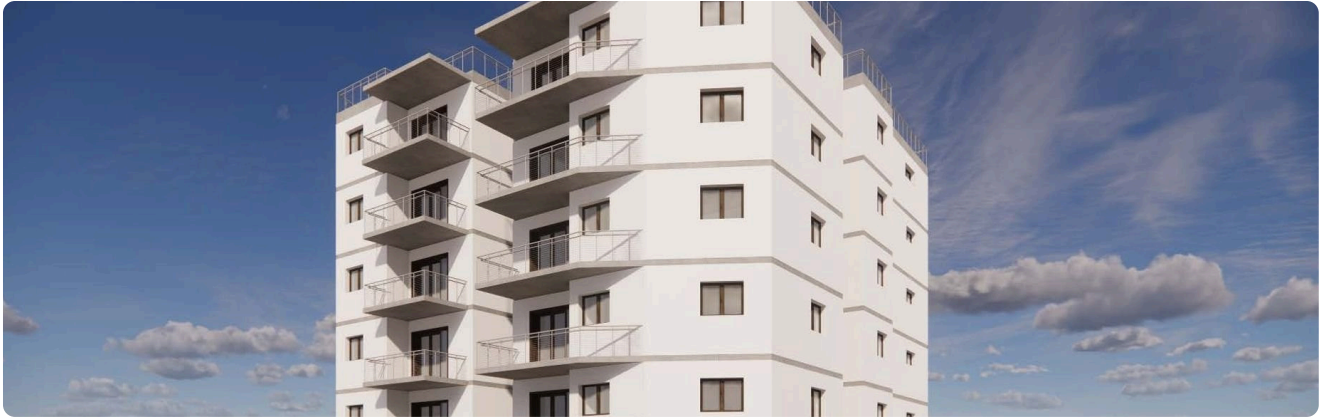
- ✓ Aircondition · Split system
 - ✓ Parking · Uncovered
 - ✓ Solar water heater
 - ✓ Solar photovoltaic panels
-

Features

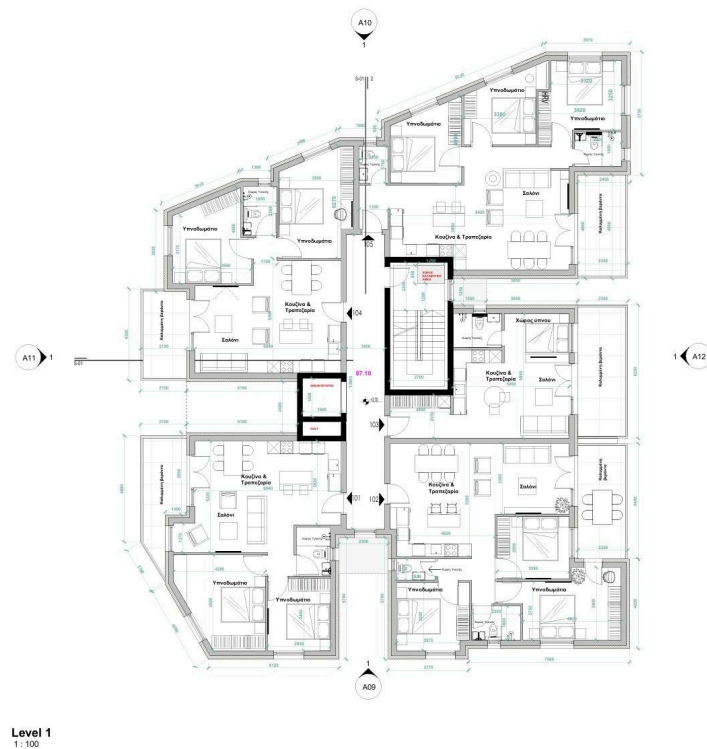
- ✓ Veranda
 - ✓ Modern design
 - ✓ Near amenities
 - ✓ Open plan
 - ✓ Thermal insulation
-

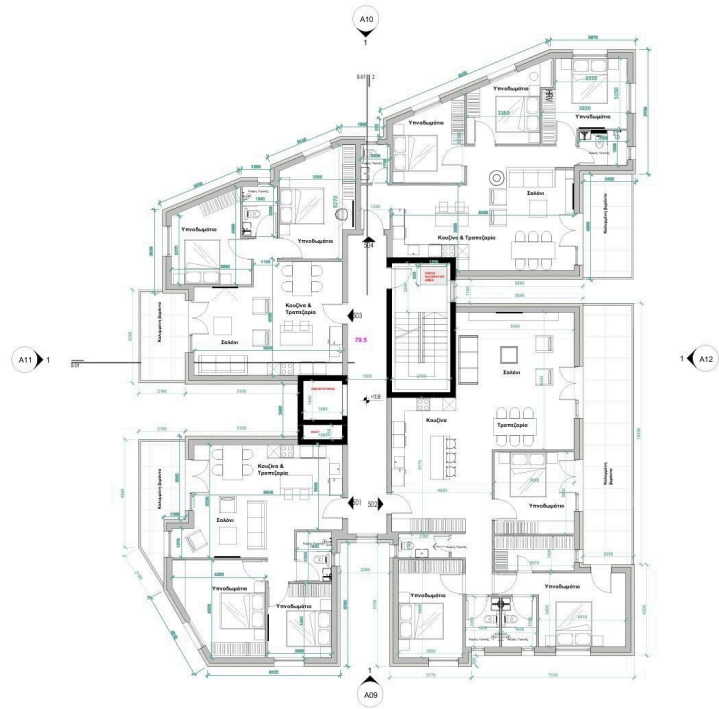
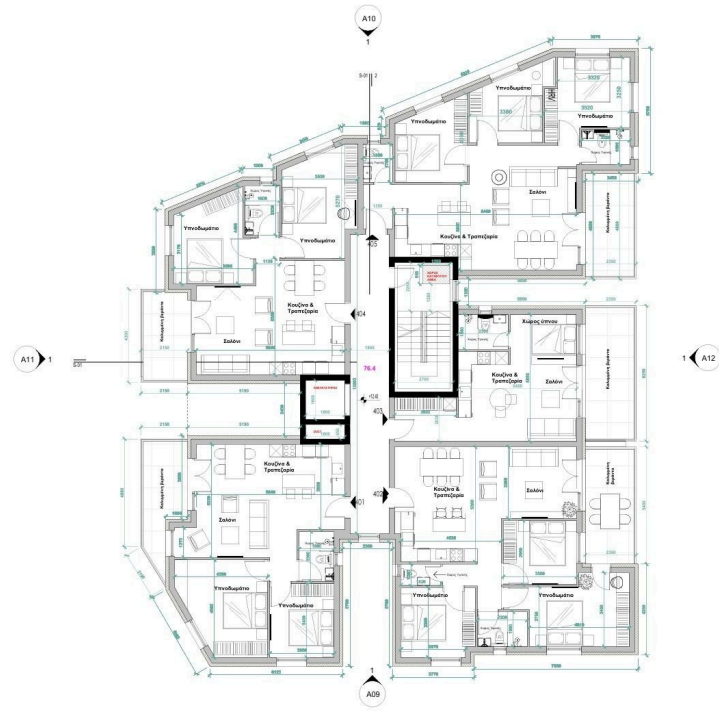
Gallery

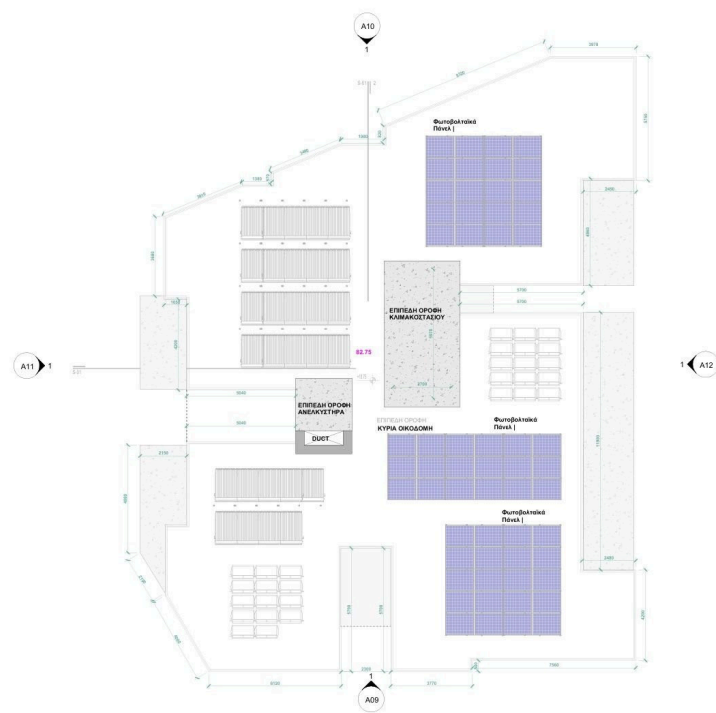




Floor plans







Level 6
1:100

