



Reference 11731

Seafront 1 Bed Apartment in Limassol, close to Marina

**€740,000** +VAT

Limassol Marina, Limassol

1 Bedroom | 1 Bathroom | 57 m<sup>2</sup> Covered

## Description

- 1 bedroom
- 1 W/C
- Internal Area 57m<sup>2</sup>
- Covered Verandas 18m<sup>2</sup>
- Covered Parking
- Communal Indoor & Outdoor Swimming Pool
- Gym & Sauna
- Sea View
- 24h Services
- Close to several amenities
- Energy Efficiency "A"

Covered veranda	18 m <sup>2</sup>
Parking spaces	1
Energy efficiency rating	A
Year of construction	2026
Status	Under construction



## Facilities

✓ Parking · Covered   ✓ Pool · Communal   ✓ Indoor pool · Communal   ✓ Gym   ✓ Sauna

---

## Features

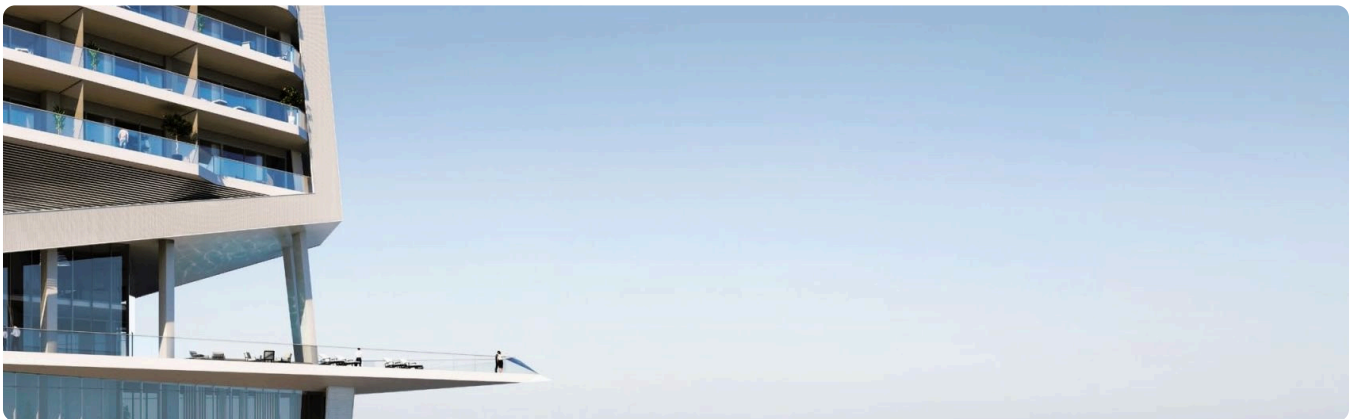
✓ Guest WC   ✓ Veranda   ✓ En suite bathroom   ✓ Luxury specifications   ✓ Modern design  
✓ Sea view   ✓ Sea front   ✓ Near amenities   ✓ Open plan   ✓ Combined kitchen and dining area  
✓ Spacious rooms

---

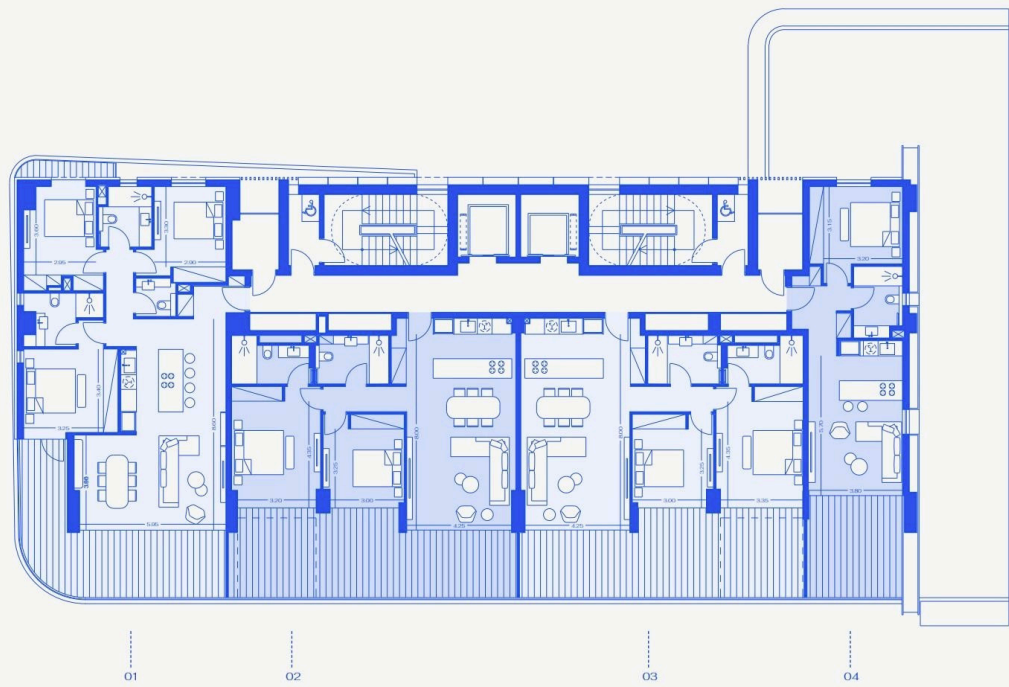
## Gallery







Floor plans





## LEVEL 11

Floorplans and dimensions displayed are indicative and may vary from level to level.

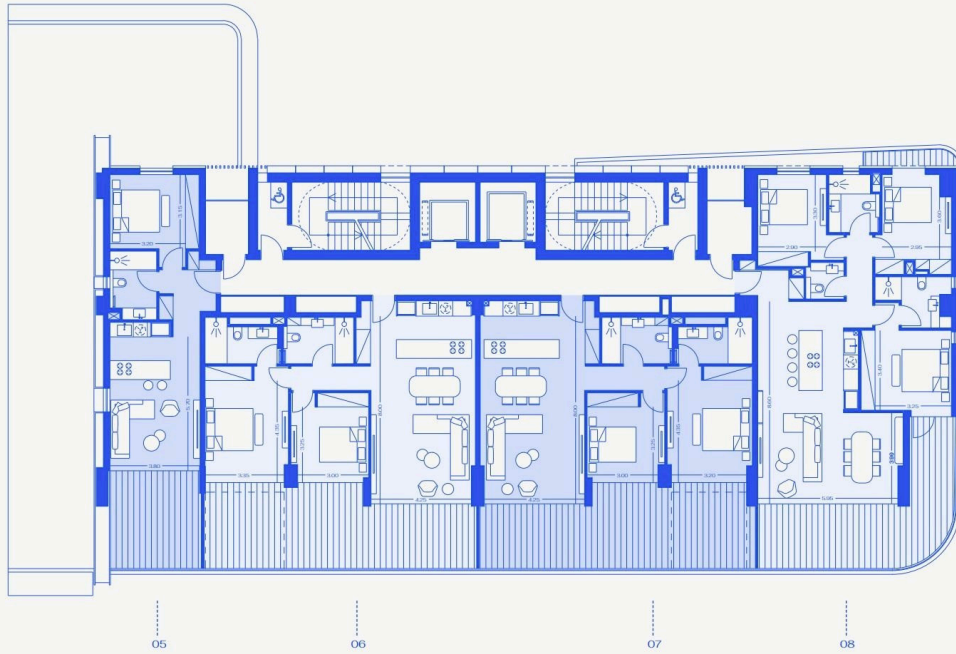


## LEVEL 12

Floorplans and dimensions displayed are indicative and may vary from level to level.







### LEVEL 3

Floorplans and dimensions displayed are indicative and may vary from level to level.



### LEVELS 4-10

Floorplans and dimensions displayed are indicative and may vary from level to level.





## LEVEL 11

Floorplans and dimensions displayed are indicative and may vary from level to level.



## LEVEL 12

Floorplans and dimensions displayed are indicative and may vary from level to level.

