



Reference 1154

3 Bedroom Maisonette Flat with Yard In Carlsberg/Latsia Area

€210,000 +VAT

Kallithea / Carlsberg, Nicosia

3 Bedrooms | 2 Bathrooms | 103 m² Covered

Description

3 Bedrooms
2 W/C
Internal Area 103m²
Covered Verandas 26m²
Yard 46m²
Energy Efficiency A

Covered veranda	26 m ²
Uncovered veranda	47 m ²
Parking spaces	1
Status	Off plan

This project is composed by 8 apartments of 2 and 3 bedrooms. It is located in one of the most well-known areas in the borders of Kallithea and Latsia in Carlsberg Area.

The building has 2 floors. On the ground floor it has the yard of the 1st floor apartments, parking places and storage area.

Big corridors which lead to the elevator and the stairway.

Spacious areas in all apartments.



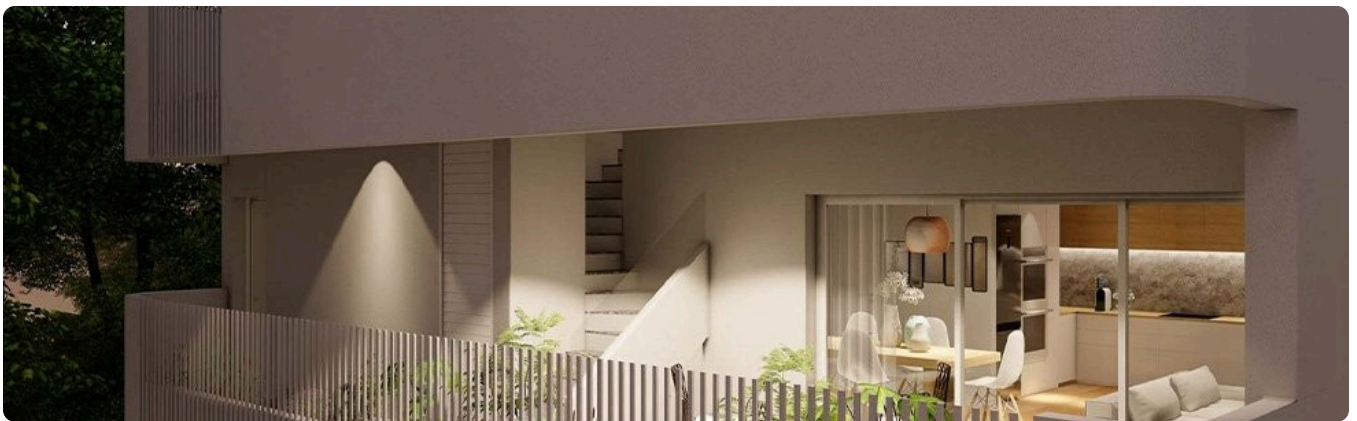
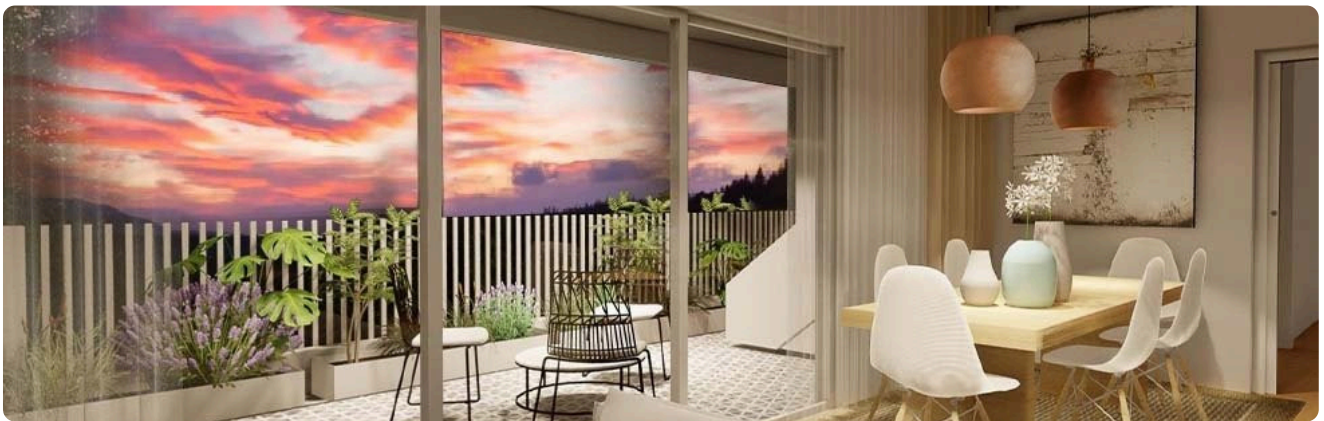
Facilities

✓ Aircondition · Split system ✓ Solar water heater ✓ Solar photovoltaic panels (provision)

Features

✓ Laundry room ✓ Alarm system ✓ Pressurized water system ✓ Connected to electric mains
✓ Municipal water/sewage ✓ Sound insulation ✓ Thermal insulation

Gallery





Floor plans



2



3

