



Reference 1140

2+1 Bedroom Roof Garden Flat In Carlsberg/Latsia Area

€185,000

Kalithea / Carlsberg, Nicosia

2 Bedrooms

2 Bathrooms

111 m² Covered

Description

SOLD

2+1 Bedroom/ 88 sqm Interior / 15sqm Roof Garden / 23 Covered Veranta / €185.000 + VAT +

This project is composed by 8 apartments of 2 and 3 bedrooms. It is located in one of the most well-known areas in the borders of Kallithea and Latsia in Carlsberg Area.

The building has 2 floors. On the ground floor it has the yard of the 1st floor apartments, parking places and storage area.

Big corridors which lead to the elevator and the stairway.

Spacious areas in all apartments.

Covered veranda 23 m²

Uncovered veranda 15 m²

Parking spaces 1

Status **Under construction**



Facilities

✓ Aircondition · Split system

✓ Solar water heater

Features

✓ Office

✓ Laundry room

✓ Alarm system

✓ Municipal water/sewage

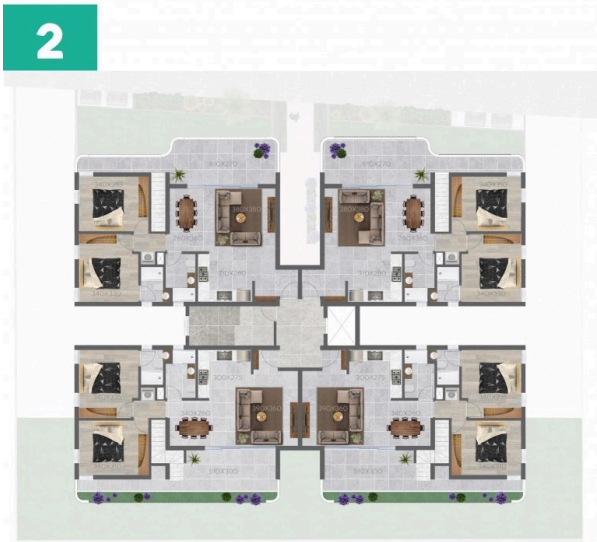
✓ Smart home

Gallery





Floor plans



1



3

