



Reference 11184

Luxury 2-Bedroom Apartment with Resort-Style Facilities in Germasogeia Tourist area

€810,000

Germasogia Tourist Area, Limassol

2 Bedrooms

2 Bathrooms

85 m² Covered

Description

Resale Opportunity | €810,000 (No VAT)

Prime Location – Germasogeia Tourist Area

- Just a short walk to the beach
- Walking distance to shops, cafes, restaurants and essential services
- Easy access to major roads while maintaining a peaceful retreat

Apartment Features:

- 2 Bedrooms
- 2 WC
- Internal Area: 85m²
- Covered Verandas: 23m²
- Family bathroom plus guest toilet
- Fully furnished & equipped

Covered veranda	23 m ²
Parking spaces	1
Energy efficiency rating	A
Year of construction	2020
Status	Key ready



- Underfloor Heating
- VRV Air Conditioning System
- Covered Parking
- Storage space
- Construction year: 2020

Exclusive Facilities:

- State-of-the-art gym and CrossFit workout area
- Two swimming pools: a 20m pool for adults and an 8m pool for children
- Poolside barbecue area
- Beautiful gardens with a playground for families
- Wellness amenities, including a sauna & outdoor jacuzzi
- Fully secured, gated complex
- Covered parking spaces with individual e-charging points



Facilities

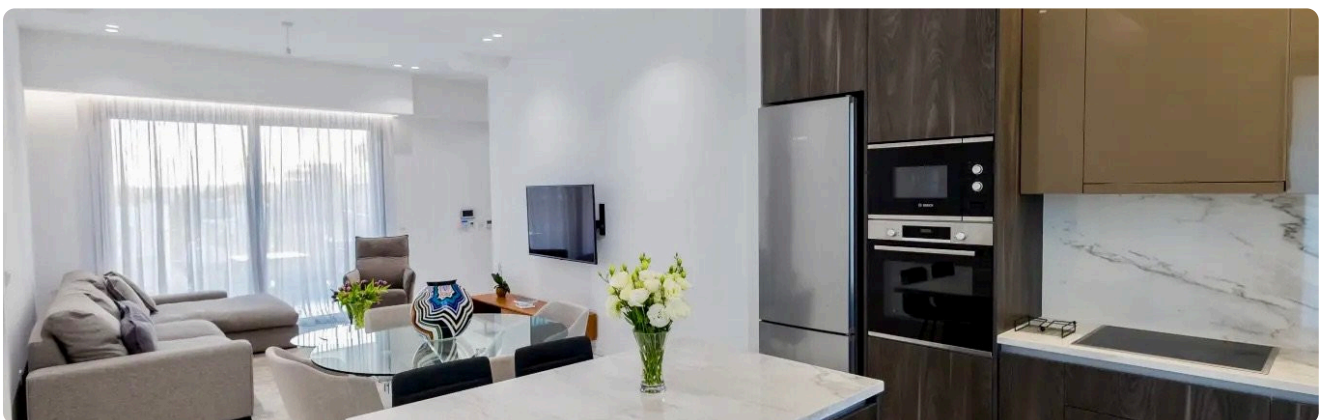
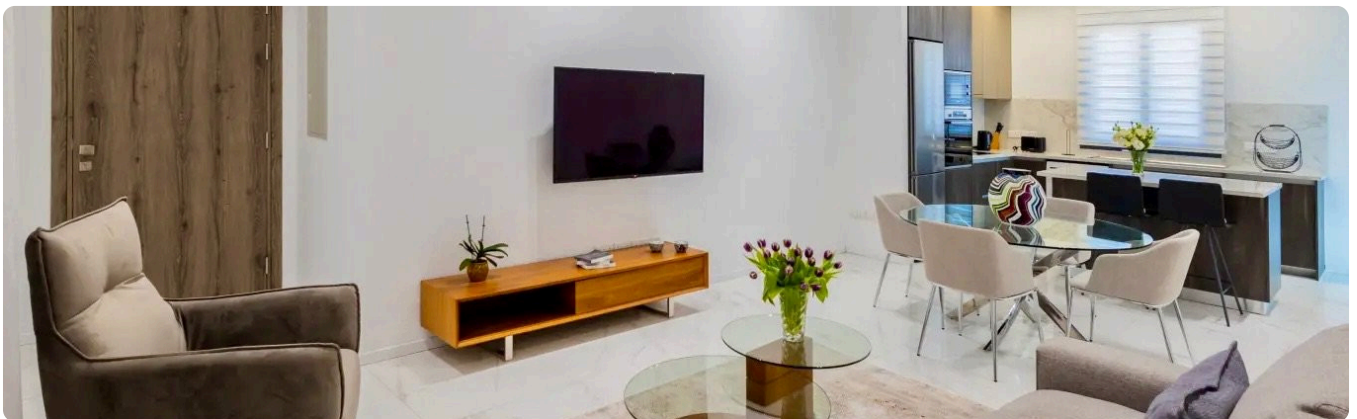
- ✓ Aircondition · Central system
 - ✓ Heating · Underfloor
 - ✓ Parking · Covered
 - ✓ Pool · Communal, overflow
 - ✓ Elevator
 - ✓ Childrens playground
 - ✓ Gym
 - ✓ Spa
 - ✓ Sauna
 - ✓ Storage
 - ✓ Gated complex
 - ✓ Landscaped garden
 - ✓ Outdoor shower
 - ✓ Solar water heater
 - ✓ Solar photovoltaic panels
-

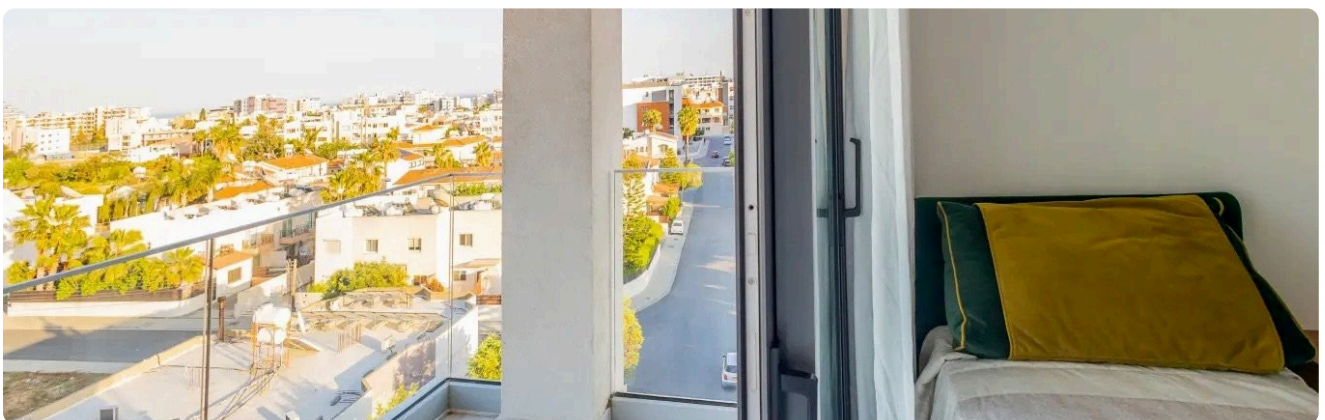
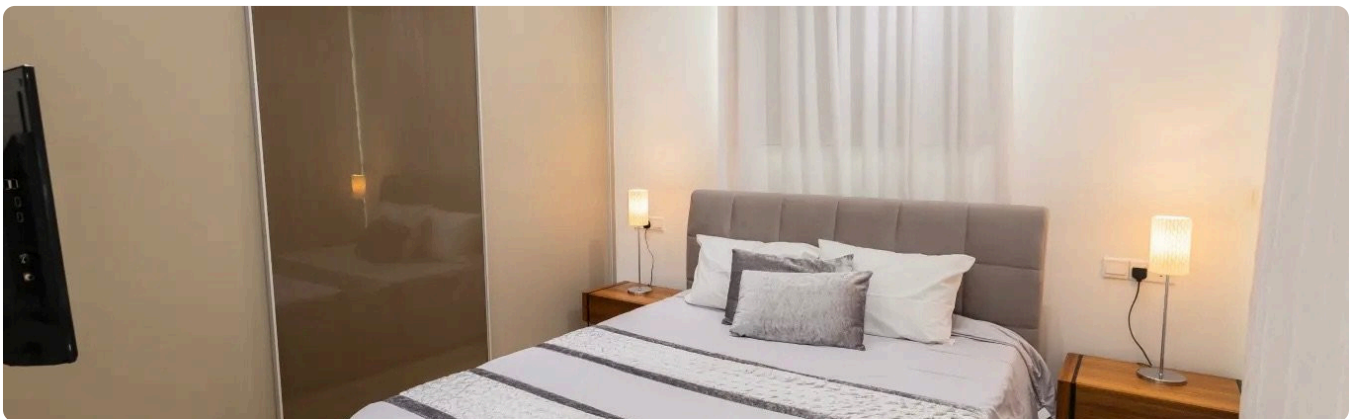
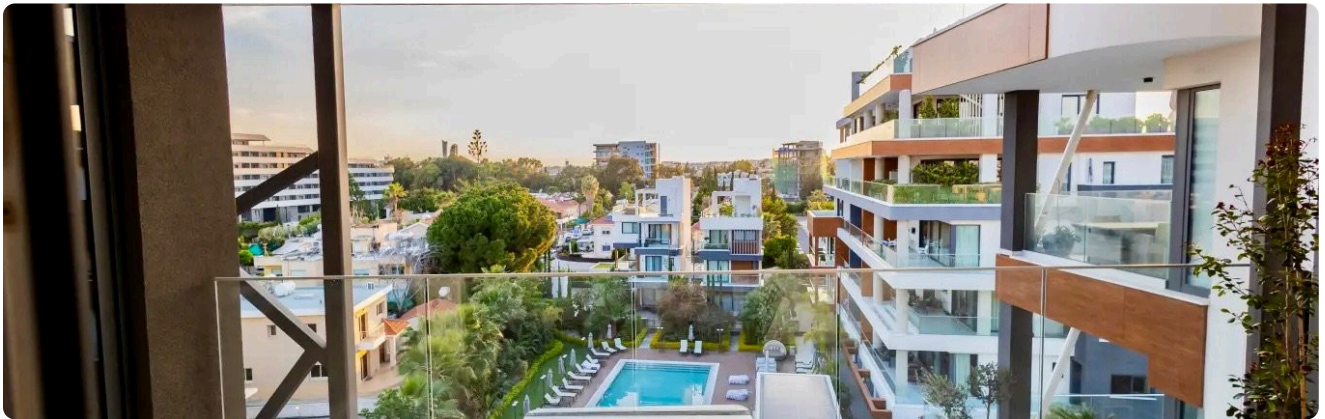
Features

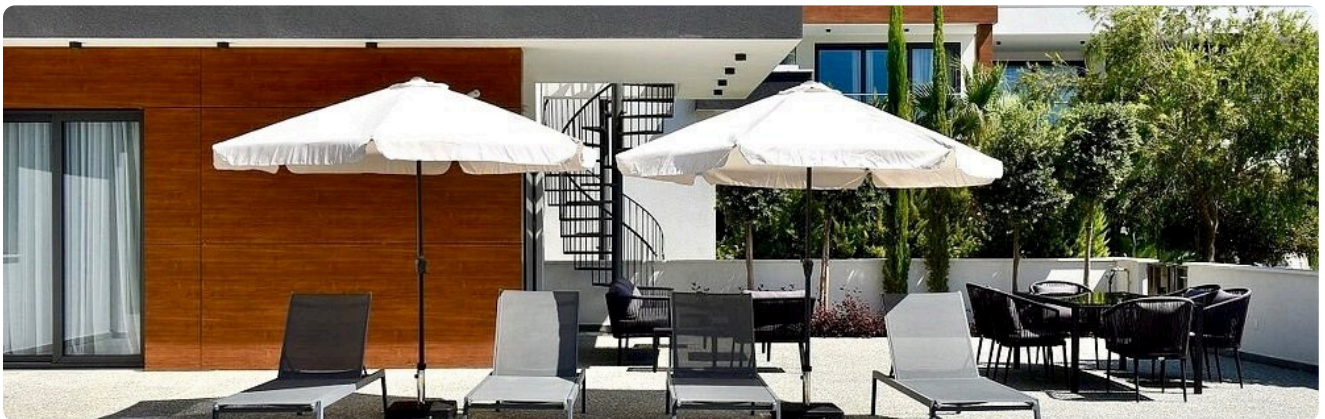
- ✓ Next to green area
 - ✓ Guest WC
 - ✓ Veranda, back
 - ✓ Veranda, front
 - ✓ Veranda
 - ✓ Quiet area
 - ✓ Marble flooring
 - ✓ CCTV
 - ✓ Luxury specifications
 - ✓ Modern design
 - ✓ Walking distance to beach
 - ✓ Near bus route
 - ✓ Near amenities
 - ✓ Internet
 - ✓ Jacuzzi
 - ✓ Marble stairs
 - ✓ Kitchen appliances
 - ✓ Alarm system
 - ✓ Double glazing
 - ✓ Open plan
 - ✓ Pressurized water system
 - ✓ Bright
 - ✓ Balcony
 - ✓ Fitted wardrobes
 - ✓ Entrance gate, automated
 - ✓ Electric car charger
 - ✓ Floor-to-ceiling windows
 - ✓ Kitchen island
 - ✓ Entrance hall
 - ✓ Energy efficient doors/windows
 - ✓ Lobby
 - ✓ Breakfast bar
 - ✓ Combined kitchen and dining area
 - ✓ Spacious rooms
 - ✓ High ceilings
 - ✓ Bathroom underfloor heating
 - ✓ 24-hour security
 - ✓ Easy access to main roads
 - ✓ Easy access to highway
 - ✓ Fire detector
 - ✓ Central TV system
-

Gallery

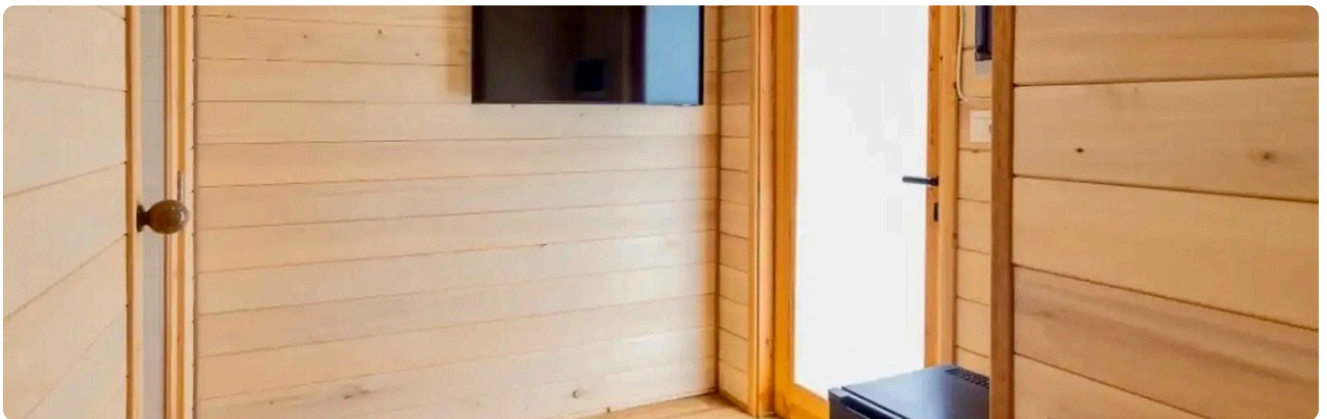
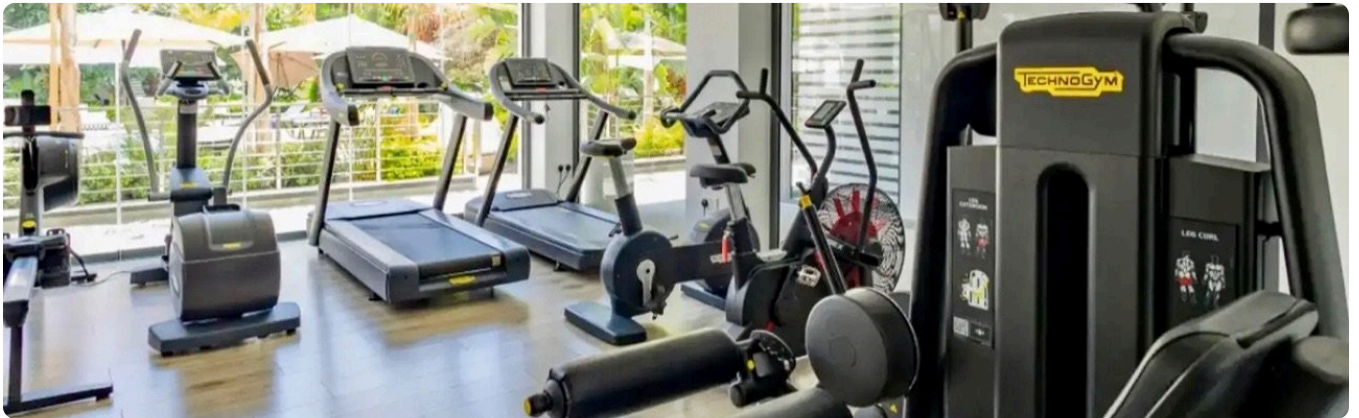


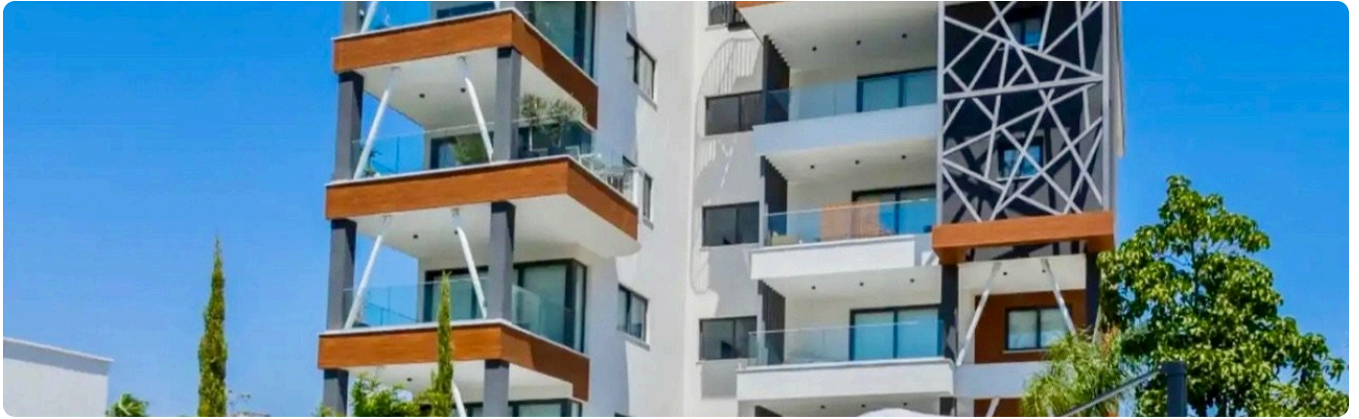












Floor plans

