



Reference 11163

3 Bed Detached House in Moni, Limassol

€400,000 +VAT

Moni, Limassol

3 Bedrooms

3 Bathrooms

130.8 m² Covered

Description

- 3 bedrooms
- 3 W/C
- Internal Area 130.8m²
- Plot Area 372.6m²
- Covered Parking
- Modern Design

Plot	372.6 m ²
Parking spaces	2
Energy efficiency rating	A
Year of construction	2026
Status	Under construction



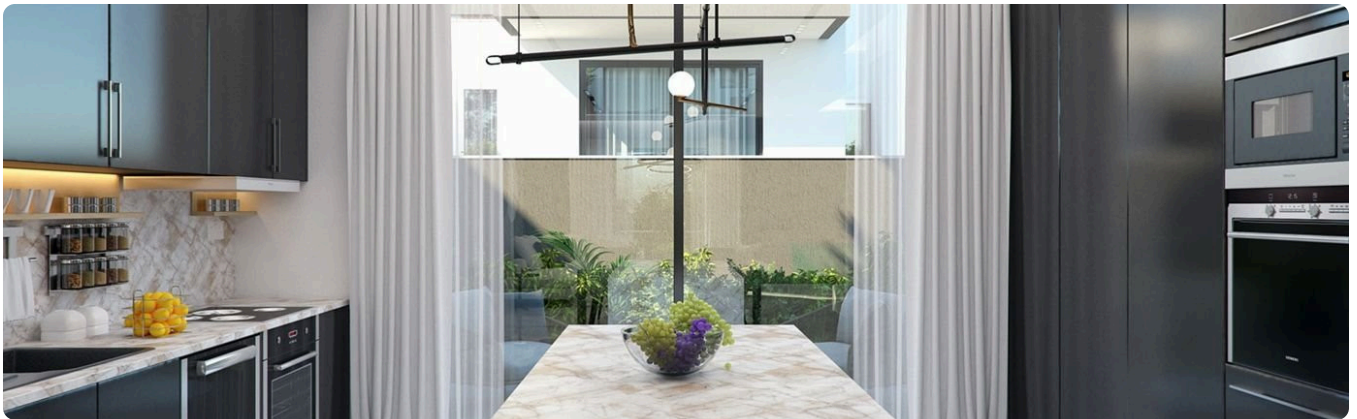
Facilities

✓ Parking · Covered

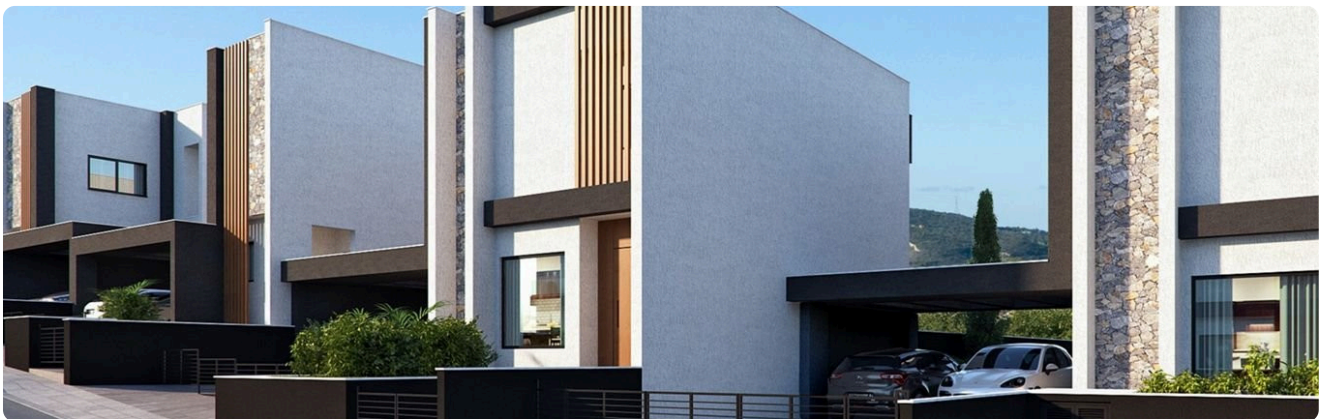
Features

✓ Guest WC ✓ Veranda ✓ Quiet area ✓ En suite bathroom ✓ Modern design ✓ Open plan
✓ Garden ✓ Internal stairs ✓ Bright ✓ Combined kitchen and dining area ✓ Spacious rooms

Gallery







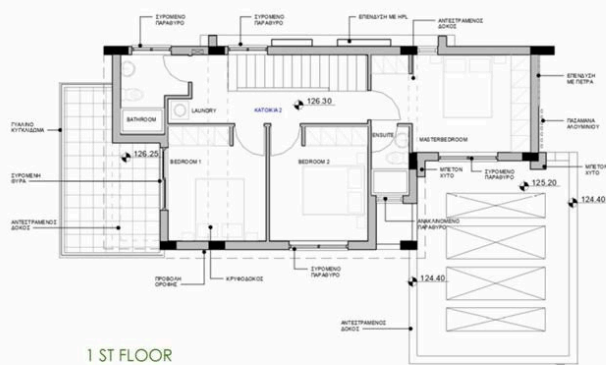


Floor plans

HOUSE TYPE A

-PLOT 1 : H4, H6

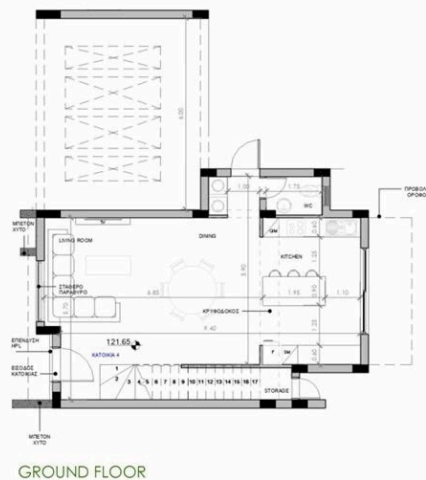
-PLOT 2 : H8, H9, H10, H14, H15



HOUSE TYPE B

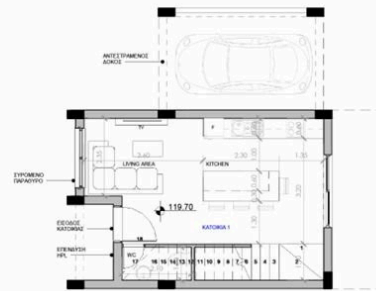
-PLOT 1 : H3, H5

-PLOT 2 : H7, H11, H12, H13



HOUSE TYPE C

-PLOT 1 : H1, H2



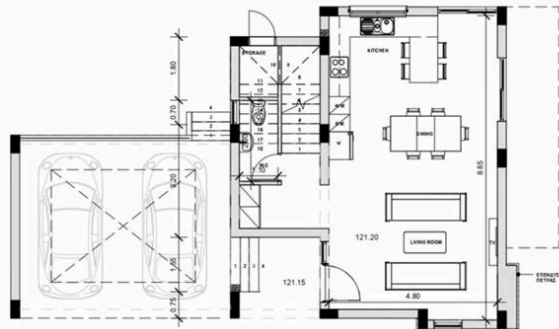
GROUND FLOOR



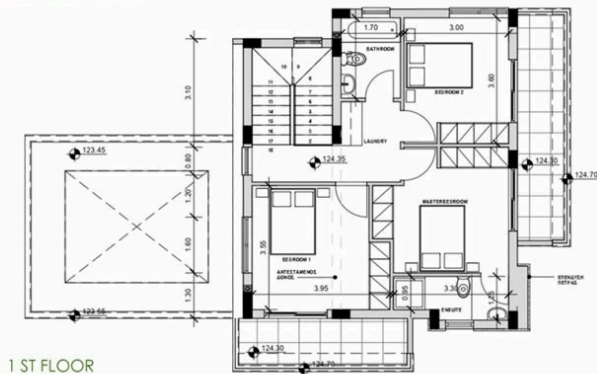
1 ST FLOOR

HOUSE TYPE D

- PLOT 3 : H2, H3



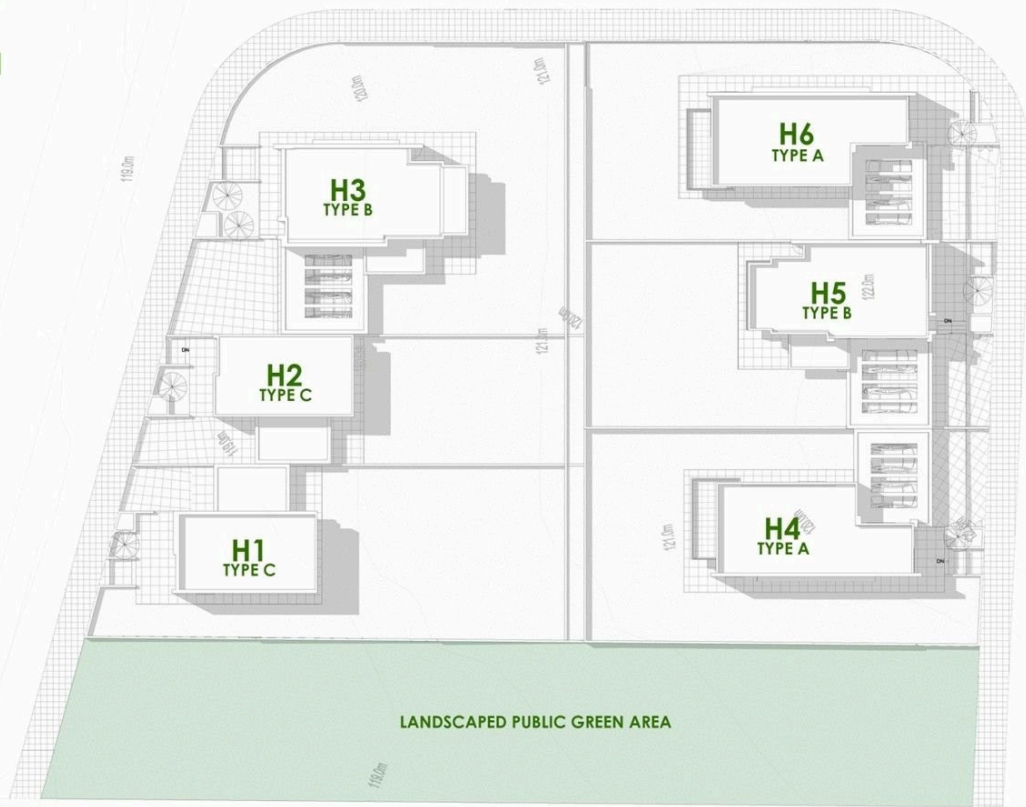
GROUND FLOOR



1 ST FLOOR



PLOT 1



PLOT 2



PLOT 2

