

Reference 11014

Office for Rent in Potamos Germasogeias, Limassol

€11,500 /month +VAT

Potamos Germasogeias, Limassol

1 Bathroom | 186 m² Covered

Description

- Office
- Internal Area 186m2
- Covered Veranda 90m2
- Kitchen
- WC
- Alarm System
- Lobby
- Covered Parking

Covered veranda 90 m²

Parking spaces 1

Status Under construction



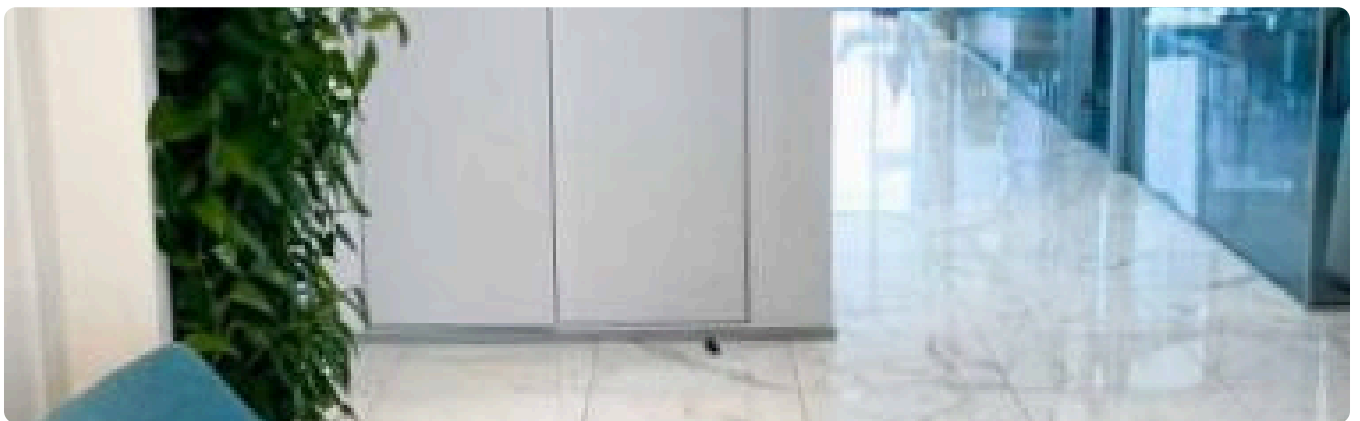
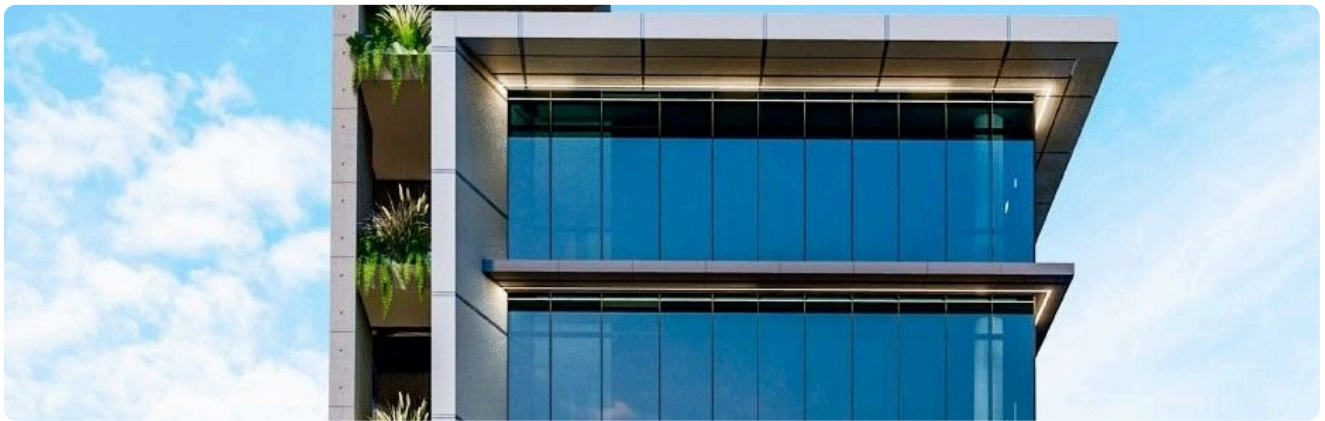
Facilities

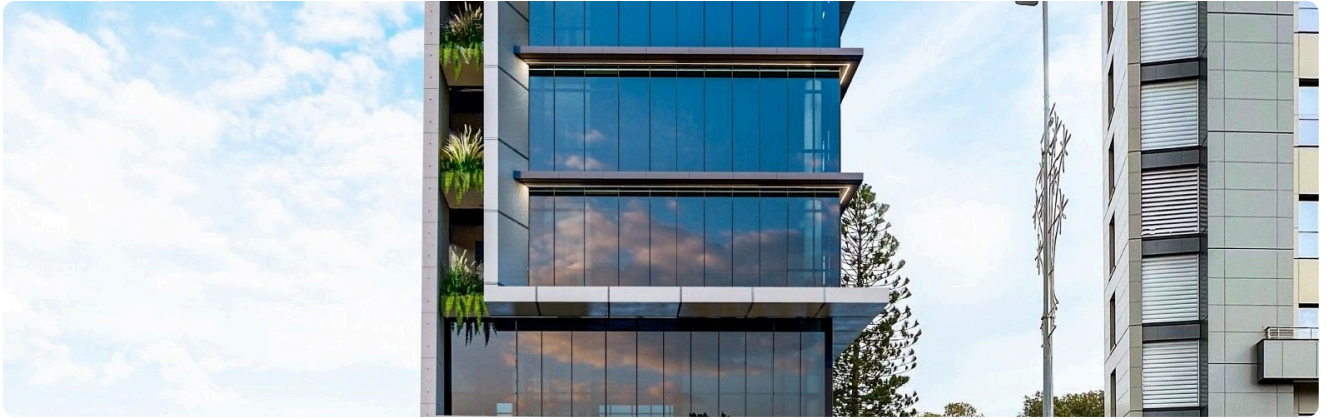
- ✓ Aircondition · Provision
 - ✓ Heating · Provision
 - ✓ Elevator
 - ✓ Solar water heater
 - ✓ Solar photovoltaic panels (provision)
-

Features

- ✓ Veranda
 - ✓ Ceramic tiles
 - ✓ CCTV
 - ✓ Alarm system
 - ✓ Easy access to main roads
 - ✓ Sound insulation
 - ✓ Lobby
 - ✓ Kitchen
-

Gallery





Architectural floor plan of a building with a sloped roof and a parking area. The plan shows a central staircase, a parking lot with 12 cars, and various rooms. Dimensions are provided in meters. A north arrow points towards the top right. The plan is labeled with 'A' and 'B' at specific locations.

Key dimensions and features include:

- Overall width: 21.30m (divided into 1.50m, 6.00m, 7.70m, 5.60m, and 1.45m segments).
- Overall depth: 13.30m (divided into 6.25m and 6.05m segments).
- Parking area: 12 cars (P-01 to P-12).
- Central staircase: 4.50m wide, 17.30m long.
- Rooms: 4.80m, 4.60m, 4.50m, 4.40m, 4.30m, 4.20m, 4.10m, 4.00m, 3.90m, 3.80m, 3.70m, 3.60m, 3.50m, 3.40m, 3.30m, 3.20m, 3.10m, 3.00m, 2.90m, 2.80m, 2.70m, 2.60m, 2.50m, 2.40m, 2.30m, 2.20m, 2.10m, 2.00m, 1.90m, 1.80m, 1.70m, 1.60m, 1.50m, 1.40m, 1.30m, 1.20m, 1.10m, 1.00m, 0.90m, 0.80m, 0.70m, 0.60m, 0.50m, 0.40m, 0.30m, 0.20m, 0.10m, 0.00m.
- Labels: A, B, C, D, E, F, G, H, I, J, K, L, M, N, O, P, Q, R, S, T, U, V, W, X, Y, Z.

