



Reference 10852

2 Bed Detached House in Moni, Limassol

€345,000 +VAT

Moni, Limassol

2 Bedrooms | 2 Bathrooms | 92 m² Covered

Description

- 2 Bedrooms
- 2 WC
- Internal Area 92m²
- Covered Veranda 14m²
- Plot Area 396m²
- Covered Parking
- Energy Efficiency "A"

Plot	396 m ²
Covered veranda	14 m ²
Parking spaces	1
Energy efficiency rating	A
Year of construction	2026
Status	Under construction



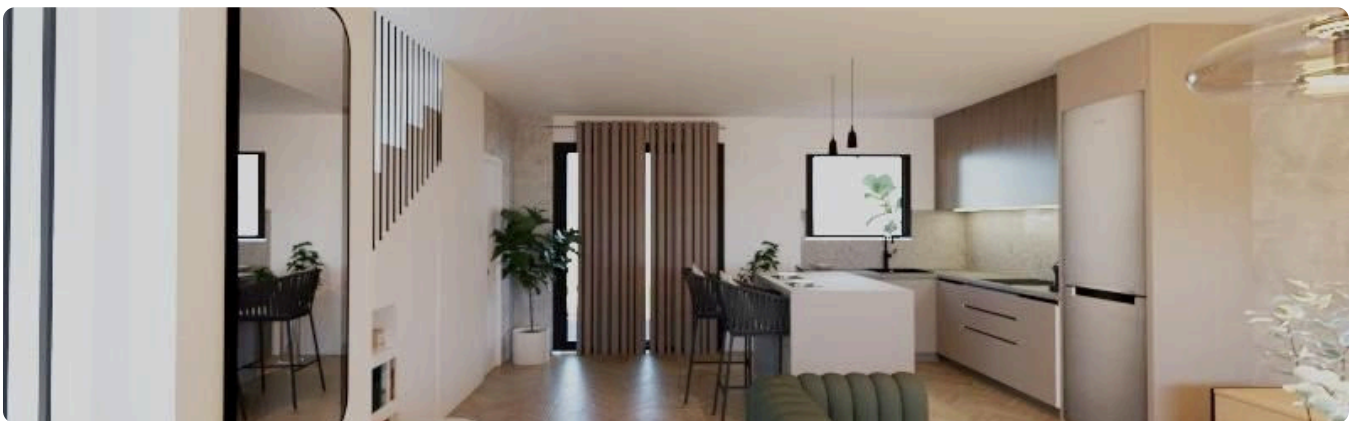
Facilities

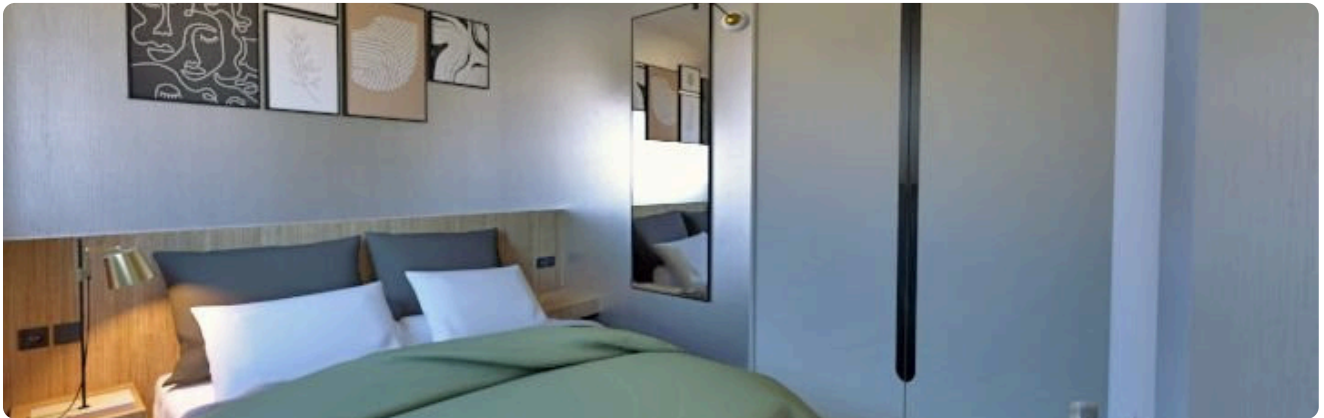
- ✓ Aircondition · Provision
 - ✓ Parking · Covered
 - ✓ Solar water heater
 - ✓ Solar photovoltaic panels (provision)
-

Features

- ✓ Guest WC
 - ✓ CCTV
 - ✓ Modern design
 - ✓ Easy access to main roads
 - ✓ Sound insulation
 - ✓ Thermal insulation
-

Gallery







Floor plans

