



Reference 10827

2 Bed Apartment with Sea View and Pool View in Larnaca

€235,000 +VAT

Sotiros, Larnaca

2 Bedrooms

2 Bathrooms

80 m² Covered

Description

- 2 Bedrooms
- 2 WC
- Internal Area 80m²
- Covered Veranda 17.50m²
- En Suite Bathroom
- Guest WC
- Storage
- Covered Parking
- Optional Pool
- Energy Efficiency "A"

Covered veranda	17.5 m ²
Parking spaces	1
Energy efficiency rating	A
Year of construction	2027
Status	Under construction



Facilities

- ✓ Aircondition · Provision
 - ✓ Parking · Covered
 - ✓ Pool · Optional
 - ✓ Elevator
 - ✓ Solar water heater
 - ✓ Solar photovoltaic panels (provision)
-

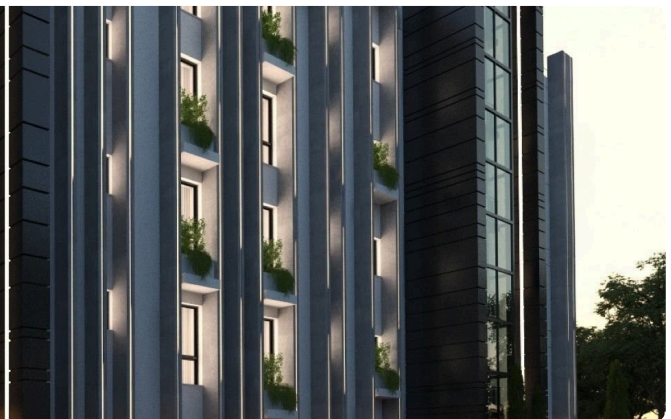
Features

- ✓ Guest WC
 - ✓ Veranda
 - ✓ CCTV
 - ✓ En suite bathroom
 - ✓ Modern design
 - ✓ Easy access to main roads
 - ✓ Sound insulation
-

Gallery









This architectural site plan illustrates the layout of Block A, a multi-story building complex. The plan includes the following details:

- Building Footprint:** The main building structure is shown with various rooms and corridors. Key areas include:
 - Block A:** A central building section with a footprint of 6.15 by 3.45.
 - Block B:** A smaller building section to the right of Block A, with a footprint of 3.45 by 3.45.
 - Block C:** A building section at the bottom of the plan, with a footprint of 3.45 by 3.45.
- Parking Areas:** Several parking zones are designated:
 - UNCOVERED CAR PARKIN:** Multiple areas for uncovered parking, located around the perimeter of the building complex.
 - COVERED CAR PARKIN:** A designated area for covered parking, located near the bottom right of the plan.
- Infrastructure and Features:**
 - ROADWAY:** A main road runs horizontally across the middle of the plan.
 - RAILROAD:** A railway line runs vertically along the left side of the plan.
 - SEWERAGE:** A sewerage line runs horizontally along the bottom of the plan.
 - WATER SUPPLY:** A water supply line runs horizontally along the top of the plan.
 - LANDSCAPING:** Green areas with trees and shrubs are shown, particularly along the bottom and right sides of the building complex.
- Dimensions and Elevation:**
 - Dimensions:** Various dimensions are provided for building sections, parking areas, and setbacks. For example, the main building section has a width of 6.15 and a depth of 3.45.
 - Elevation:** Elevation points are marked throughout the plan, including:
 - EGL+0.54, EGL+0.58, EGL+0.09, EGL+0.76:** Elevation points along the left side of the plan.
 - EGL+0.42, EGL+0.36, EGL+0.32, EGL+0.09:** Elevation points along the top and right side of the plan.
 - FFL+0.70, FFL+0.90, FFL+0.70:** Finished Floor Level (FFL) points for different building sections.

