



Reference 10240

1 Bed Penthouse Apartment in Ypsonas, Limassol

€180,000 +VAT

Ypsonas, Limassol

1 Bedroom | 1 Bathroom | 51 m² Covered

Description

- 1 bedroom
- 1 W/C
- Internal Area 51m²
- Covered Verandas 17m²
- Covered Parking
- Storage
- Energy Efficiency "A"

Covered veranda	17 m ²
Parking spaces	1
Energy efficiency rating	A
Year of construction	2027
Status	Under construction



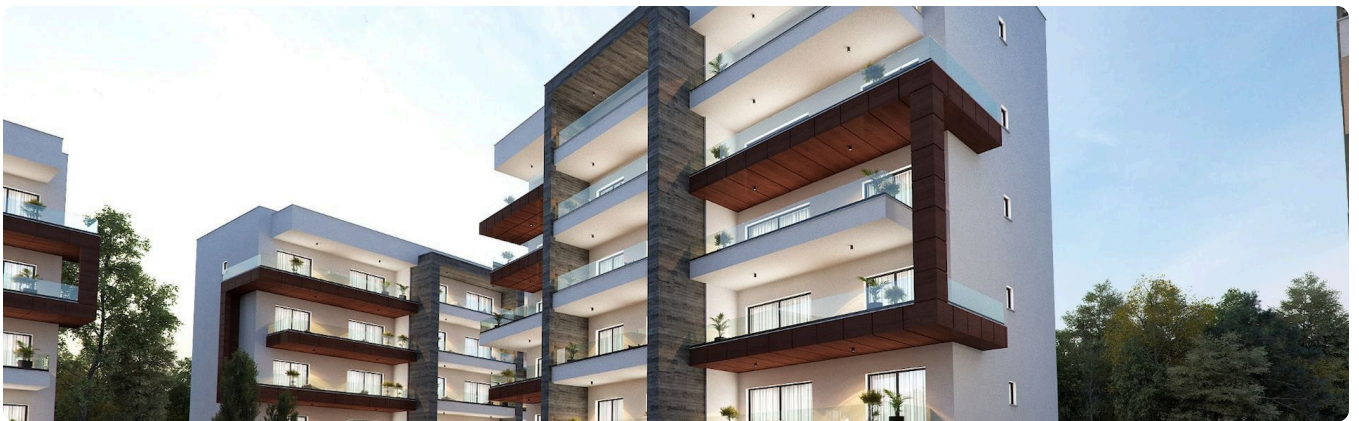
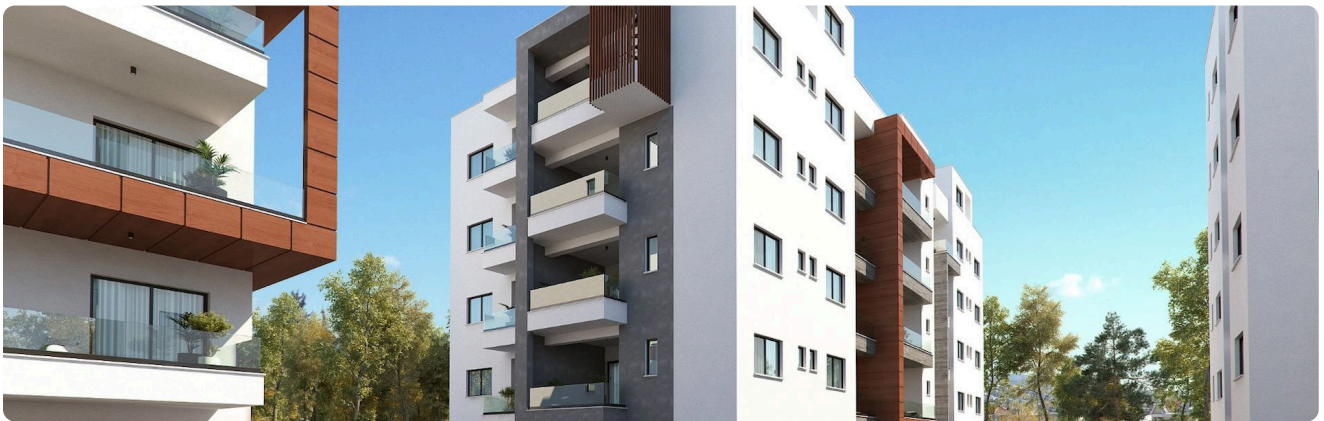
Facilities

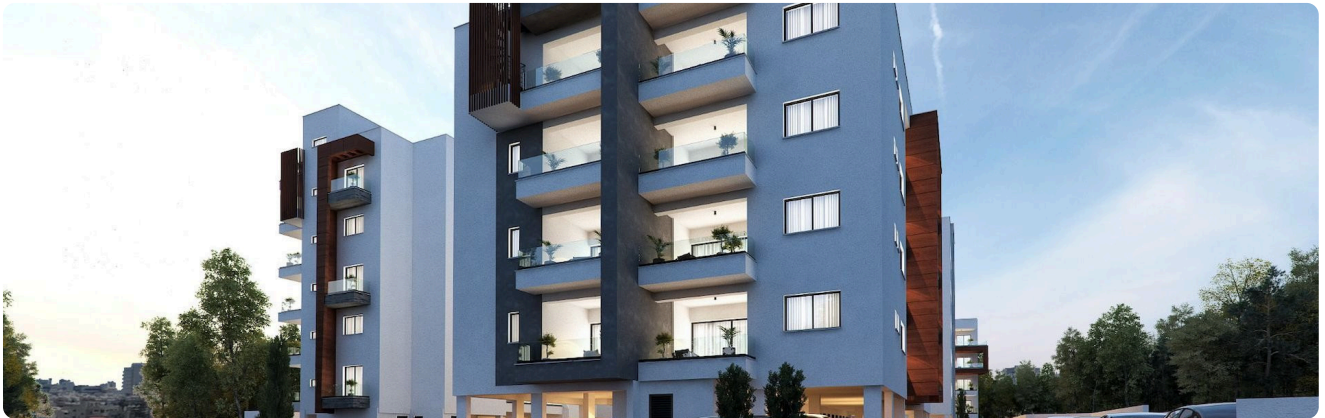
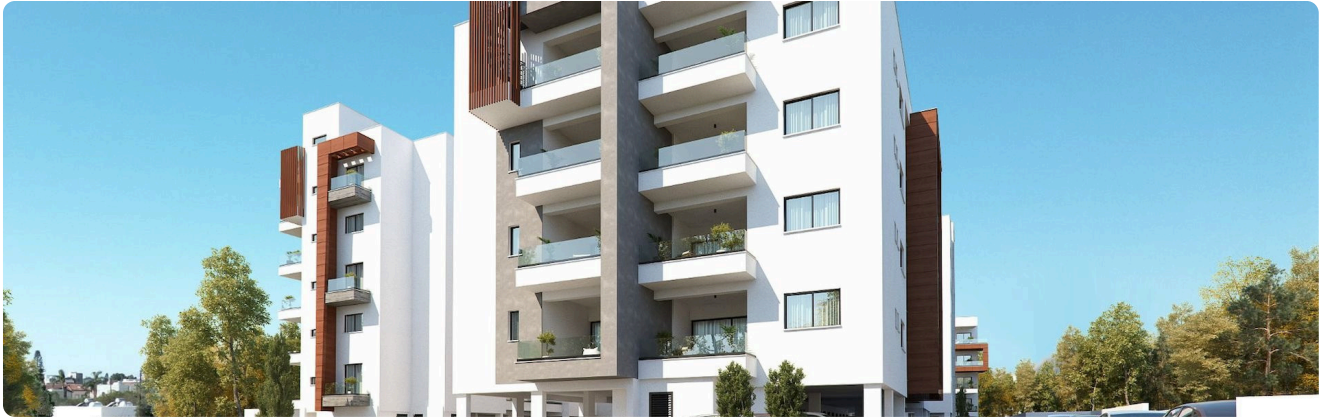
✓ Aircondition · Provision ✓ Parking · Covered ✓ Storage ✓ Solar water heater

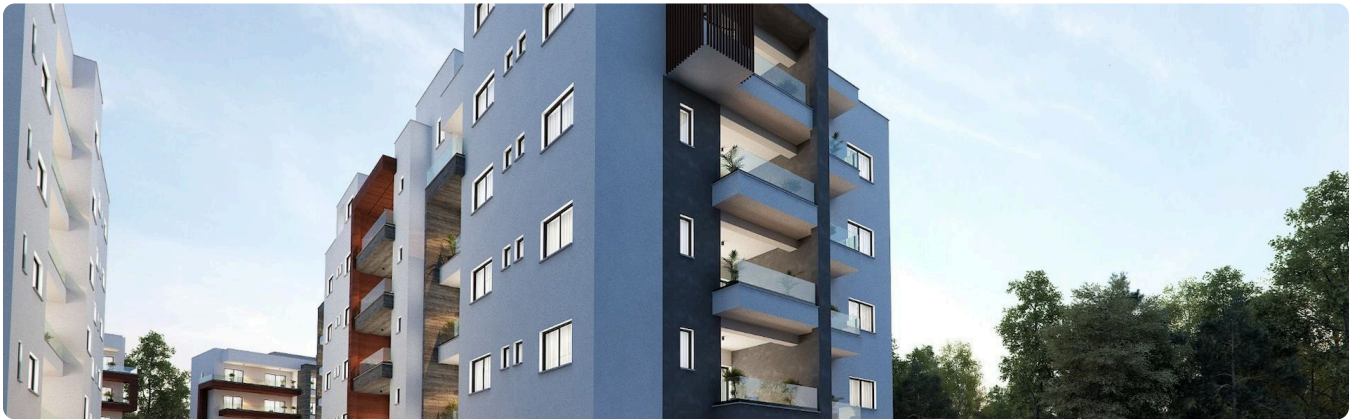
Features

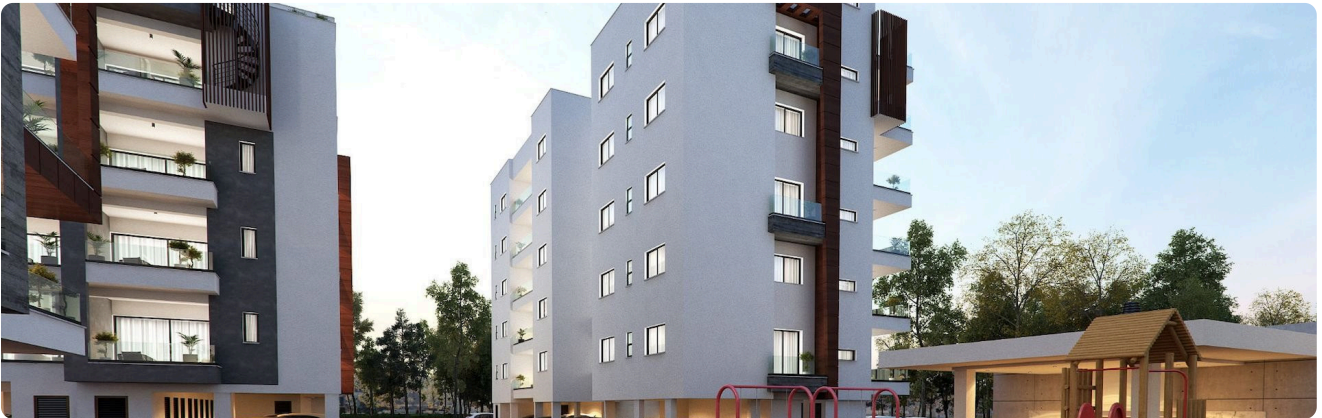
✓ Veranda ✓ Granite countertops ✓ Laminate flooring ✓ Ceramic tiles ✓ Modern design
✓ Double glazing ✓ Open plan ✓ Door screen ✓ Thermal insulation

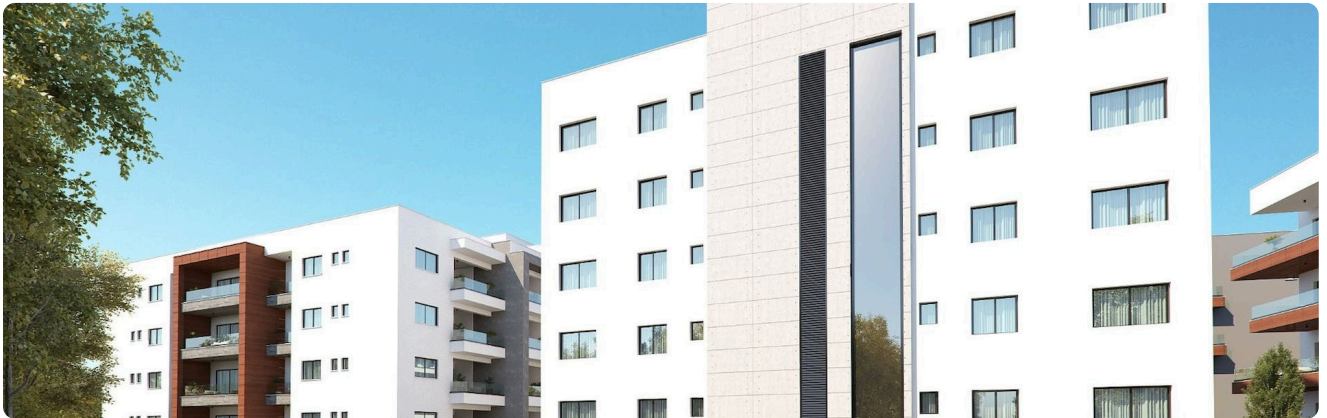
Gallery











Floor plans







