

# Unique Property NICOSIA - CYPRUS



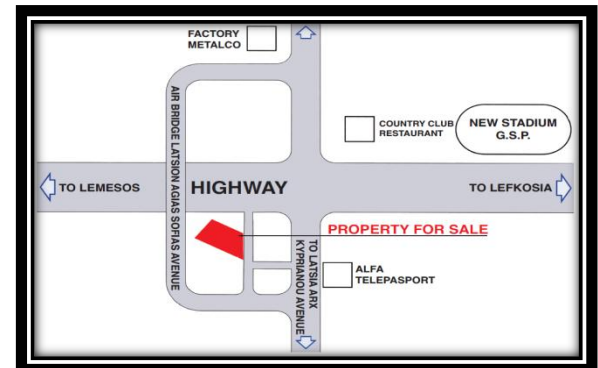
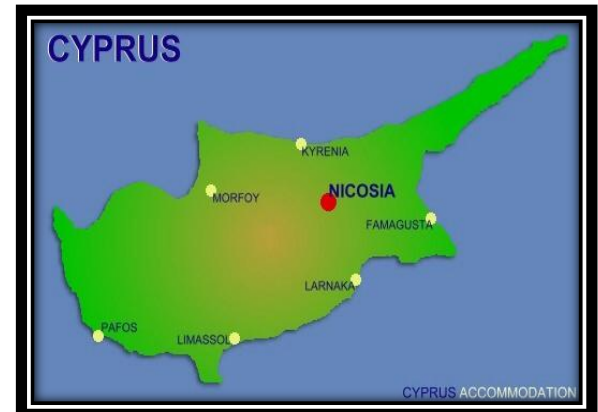






# For sale residential or commercial building for house or offices 415 sq.m. on the Highway, at the entry of Nicosia.

- Prime location on the Highway in the entry of Nicosia – Latsia .
- According to formal measuring 25,000,000 cars passing by this place every year (it is a road of higher traffic movements).
- It is unique because it is surrounded by roads.
- Easy access to and from the Nicosia and Latsia Highway.
- The property is ideal for house or offices with capacity for parking more than 8 cars insight and 20 cars outside the building.

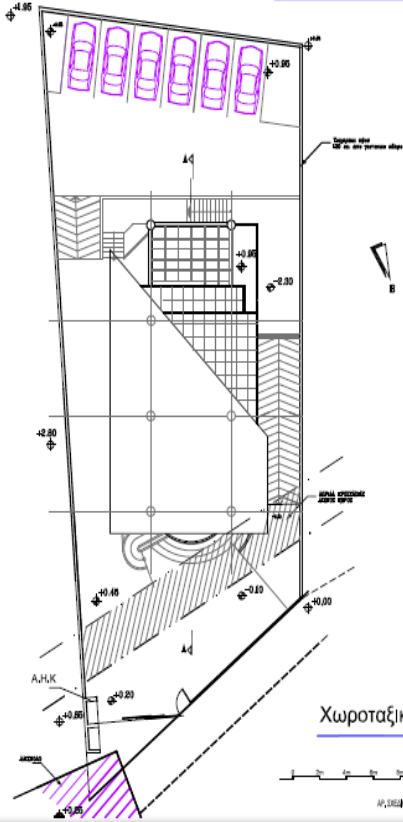


# The Property

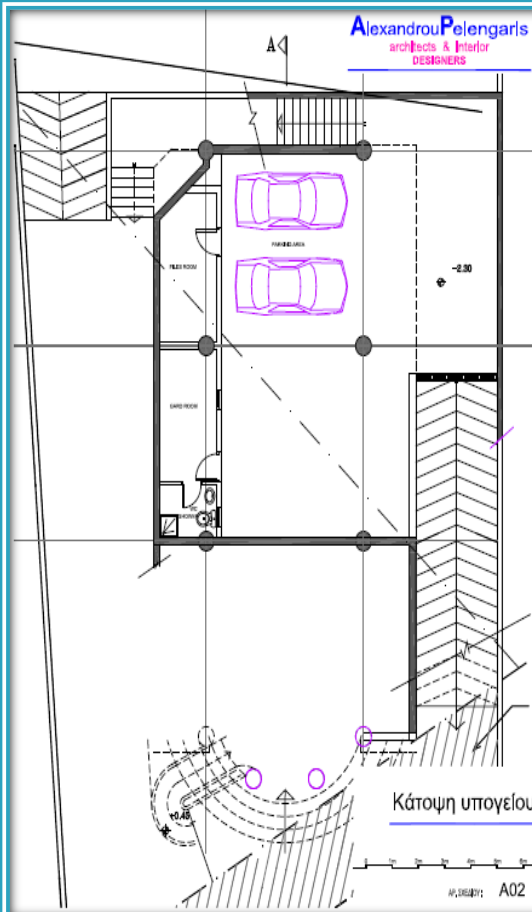
## Basement

## Ground floor

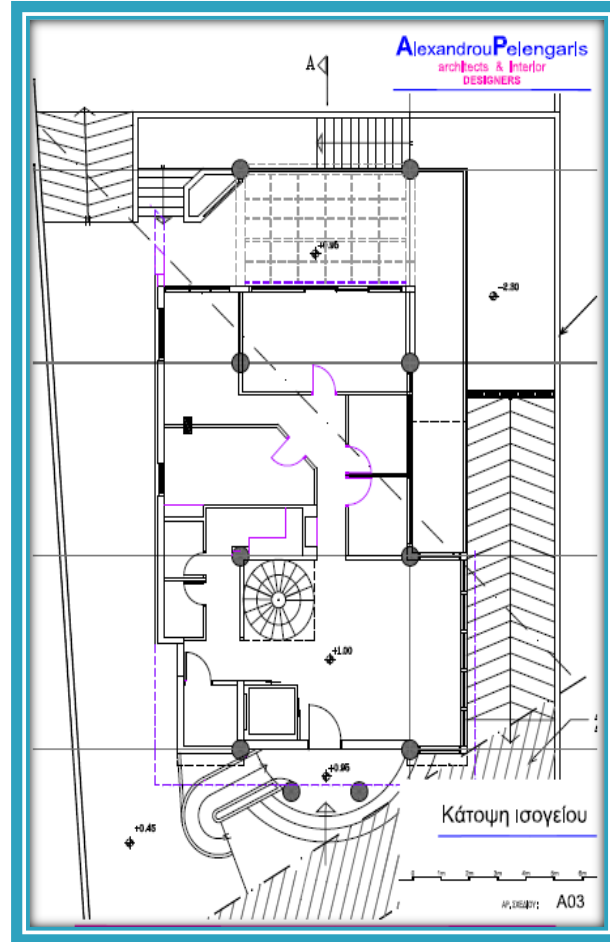
AlexandrouPelengaris  
architects & Interior  
DESIGNERS



AlexandrouPelengaris  
architects & Interior  
DESIGNERS



AlexandrouPelengaris  
architects & Interior  
DESIGNERS



# 1st Floor

# 2nd Floor

# Roof Plan

